



Top Stories

January/February 2024

<div>The Southeast Alabama Regional Inservice Center Announces Educators Who Achieved National Board Certification in 2023 in Region 11</div> <div></div> <div>Page 2</div>	<div>Scholastic Art &amp; Writing Awards Program 2024</div> <div>Submission Deadline Extended to February 2, 2024</div> <div></div> <div>Page 3</div>	<div>Special Education Professional Development</div> <div></div> <div>Pages 4-5</div>	<div>National Board for Professional Teaching Standards Candidate Support Network</div> <div>January 13, 2024</div> <div>February 10, 2024</div> <div></div> <div>Page 6</div>
<div>eLearning Schedule of Spring Courses</div> <div></div> <div>Page 7</div>	<div>Office of Student Learning</div> <div>Strong Leaders, Strong Readers</div> <div>Everyone Counts</div> <div></div> <div>Page 8</div>	<div>Technology in Motion</div> <div></div> <div>Pages 9-11</div>	<div>Save the Date:</div> <div>Gulf Coast Conference on the Teaching of Writing</div> <div>July 1 - 4, 2024</div> <div>Perdido Beach Resort</div> <div>Orange Beach, Alabama</div> <div></div> <div>Page 12</div>
<div>PowerSchool Unified Insights Regional Trainings</div> <div>Page 13</div> <div></div>	<div>Visit our website using the following QR Code.</div> <div></div>		

# Subject: Congratulations to Our National Board Certified Teachers!



We are thrilled to announce and celebrate the outstanding achievements of our dedicated educators in Region 11 who have successfully achieved National Board Certification during this assessment cycle. This prestigious certification is a testament to their commitment to excellence in teaching and their ongoing pursuit of professional growth.

Please join us in congratulating the following teachers for their remarkable accomplishment:

## Newly Certified National Board Certified Teachers

Name	School/School District	Certification Area
Heather Dills	Girard Elementary School Dothan City School District	Exceptional Needs Specialist/Early Childhood through Young Adulthood
Alexis Elston	Beverley Intermediate School Dothan City School District	Literacy: Reading-Language Arts/Early and Middle Childhood
Robert Watson	PASS Academy Dothan City School District	Science/Early Adolescence
Rachel Everett	Pike County Elementary School Pike County School District	Literacy: Reading-Language Arts/Early and Middle Childhood
Catherine Grissett	Goshen Elementary School Pike County School District	Generalist/Middle Childhood

## Completed Recertification Requirements through the Maintenance of Certification Assessment Requirements

Name	School/School District	Certification Area
Cheryl Adams	Alabama State Department of Education AMSTI	Generalist/Middle Childhood
Holly Rollins	Newton School Dale County District	Generalist/Early Childhood
Angela Brockman	Enterprise High School Enterprise City School District	Exceptional Needs Specialist/Early Childhood through Young Adulthood
Kasandra Granger	Hillcrest Elementary School Enterprise City School District	Literacy: Reading-Language Arts/Early and Middle Childhood
Joshua King	Enterprise High School Enterprise City School District	Career and Technical Education/Early Adolescence through Young Adulthood

These teachers have demonstrated an exceptional commitment to enhancing their teaching practices and contributing to the overall excellence of our educational community. We are immensely proud of their accomplishments and the positive impact they continue to make on the lives of our students.

Once again, congratulations to our National Board Certified Teachers! Your dedication to professional development and your passion for education are truly inspiring.

# Calling All Young Writers: Scholastic Art and Writing Awards 2024 - Alabama Writing Region Submission Deadline Extended to February 2, 2024



Due to unforeseen technical difficulties, many students encountered barriers when attempting to submit their works by the original deadline of December 14, 2023; therefore, we extended the deadline to December 18, 2023. Despite the deadline extension, we are aware that the technical issues persist for some students. To ensure a better user experience and facilitate easier access for all participants, Scholastic is working diligently to resolve these technical hurdles. We understand the importance of providing a smooth and accessible platform for all participants, and we apologize for any inconvenience this may have caused. In response to these challenges, we have decided to extend the submission deadline to February 2, 2024.

We kindly request that you ask your students to confirm their account and complete, and confirm their entry by the new deadline of February 2, 2024. Your support is invaluable to us, and we want to ensure that all students have the opportunity to showcase their talents in the 2024 Scholastic Art & Writing Awards.

The regional ceremony will take place on July 3, 2024. We are excited about the exceptional talent that this year's submissions will undoubtedly showcase, and we look forward to celebrating the achievements of all participants.

Thank you once again for your understanding, patience, and continued interest in the Scholastic Art & Writing Awards. If you have any further questions or encounter any issues, please do not hesitate to reach out to us at 334-670-5978.

# Special Education Professional Development



In partnership with the Alabama State Department of Education-Special Education Services (ALSDE-SES), Public Consulting Group (PCG) is providing a professional learning platform, known as Playbook, for teachers and school leaders from across the state. Educators will complete self-paced modules, known as Plays, which include videos, templates, and guidance documents embedded directly into the interactive Play. In addition, educators can post messages to a community of peers from across the state and access the resource and coaching library. Each Playbook is entirely self-paced and available at your convenience.

Online Learning Course Title	PowerSchool Registration	Additional Information
<b>Alternate Achievement Standards Playbook</b> <ul style="list-style-type: none"><li>■ Designed for teachers of students with significant cognitive disabilities.</li><li>■ Consists of eight self-paced Plays and four self-paced webinars that explore topics, skills, and strategies relevant to communication, instruction, and behavioral support of students with significant disabilities.</li><li>■ Contact Alison Flinchum at <a href="mailto:aflinchum@pcgus.com">aflinchum@pcgus.com</a> with questions.</li></ul>	<a href="#">REGISTER HERE!</a>	<a href="#">VIEW THE FLYER!</a>
<b>Teacher Playbook</b> <ul style="list-style-type: none"><li>■ Designed for all special education teachers.</li><li>■ Consists of eight core self-paced Plays that span an array of best-practices for special education teachers, including: using progress monitoring to assess IEP goals, using positive behavioral strategies, and more!</li><li>■ Contact Colin Butler at <a href="mailto:cbutler@pcgus.com">cbutler@pcgus.com</a> with questions.</li></ul>	<a href="#">REGISTER HERE!</a>	<a href="#">VIEW THE FLYER!</a>
<b>High Leverage Practices Playbook</b> <ul style="list-style-type: none"><li>■ Designed for all special educators.</li><li>■ Consists of eight core self-paced Plays and resources that explore ways to adjust instruction in order to meet students’ needs.</li><li>■ Contact Colin Butler at <a href="mailto:cbutler@pcgus.com">cbutler@pcgus.com</a> with questions.</li></ul>	<a href="#">REGISTER HERE!</a>	<a href="#">VIEW THE FLYER!</a>

Online Learning Course Title	PowerSchool Registration	Additional Information
<b>Director Playbook</b> <ul style="list-style-type: none"> <li>■ Designed for special education directors and coordinators.</li> <li>■ Consists of eleven self-paced Plays that explore topics, skills, and strategies relevant to engaging with stakeholders, building instructional teams, and leading special education programs.</li> <li>■ Contact Alison Flinchum at <a href="mailto:aflinchum@pcgus.com">aflinchum@pcgus.com</a> with questions.</li> </ul>	<a href="#">REGISTER HERE!</a>	<a href="#">VIEW THE FLYER!</a>
<b>Effective Math Teaching Practices for Teachers of Grades K-8</b> <ul style="list-style-type: none"> <li>■ Designed for general and special education mathematics teachers.</li> <li>■ Consists of eight self-paced Plays that explore topics, skills, and strategies related to fluency, questioning, and mathematical discourse.</li> <li>■ Contact Alison Flinchum at <a href="mailto:aflinchum@pcgus.com">aflinchum@pcgus.com</a> with questions.</li> </ul>	<a href="#">REGISTER HERE!</a>	<a href="#">VIEW THE FLYER!</a>
<b>Developing Strong Literacy Skills in Grades 4-8</b> <ul style="list-style-type: none"> <li>■ Designed for general and special education language teachers.</li> <li>■ Consists of six self-paced Plays that explore topics, skills, and strategies related to the science of reading and adolescent reading.</li> <li>■ Contact Michelle Wade at <a href="mailto:mwade@pcgus.com">mwade@pcgus.com</a> with questions.</li> </ul>	<a href="#">REGISTER HERE!</a>	<a href="#">VIEW THE FLYER!</a>

To continue exploring this comprehensive, state-wide professional development for special education leaders, teachers, and paraprofessionals, visit our website at [alabamases.com](http://alabamases.com).



# National Board Candidate Support Network Workshops: January & February 2024



The Southeast Alabama Regional Inservice Center (SEARIC) National Board Candidate Support Network is excited to announce its upcoming workshops for January & February 2024. These interactive sessions are tailored to educators aspiring to achieve National Board Certification or those seeking to enhance their teaching skills. These workshops will be presented in a hybrid format, providing flexibility for participants.

## Workshop Details:

- Format:** Hybrid (Face-to-Face at Troy University Dothan Campus or via Zoom)
- January Workshop Date:** January 13, 2024, 9:00 AM – 12:00 PM – **PowerSchool Section #: 484673**

**January 13, 2024 Workshop Focus:** Component 3 Teaching Practice & Learning Environment Instructions and Work Session with Mentors. Collaborate with colleagues and mentors to design, plan, and reflect lesson ideas. This component is a classroom-based portfolio entry that includes a video of your interactions with students to be analyzed and reflected on in your writing.

**How to Attend:** Choose your preferred mode of participation. You can either join us face-to-face at the Troy University Dothan Campus or connect remotely through Zoom.

This workshop offers a unique opportunity to engage with fellow educators, share experiences, and build a supportive network on your journey toward excellence in teaching.

Don't miss the chance to enhance your teaching skills and work towards National Board Certification.

January 13, 2024 ZOOM Registration Link

<https://us02web.zoom.us/meeting/register/tZ0kdOCgqTluGt3aFP5EKt-Yy2y42om9ZUFA>

- February Workshop Date:** February 10, 2024, 9:00 AM – 2:00 PM – **PowerSchool Section #: 484674**

**February 10, 2024 Workshop Focus:** NBPTS Network Mini Writing Retreat and Technology Requirements Work Session with Mentors

Collaborate with colleagues and mentors during this day-long writing retreat. The retreat includes: 1) scheduled presentations of tips for effective writing in the 3 styles of writing used for NBCT – description, analysis, and reflection; 2) focused writing sessions; and 3) peer review and editing activities.

**How to Attend:** Choose your preferred mode of participation. You can either join us face-to-face at the Troy University Dothan Campus or connect remotely through Zoom.

This workshop offers a unique opportunity to engage with fellow educators, share experiences, and build a supportive network on your journey toward excellence in teaching.

Don't miss the chance to enhance your teaching skills and work towards National Board Certification.

February 10, 2024 ZOOM Registration Link

<https://us02web.zoom.us/meeting/register/tZ0qceCurTwsHdHaNFEIrk05IeO5NdZbTArg>



It Is ...



*inspired teachers inspiring students*

- 
- [About Us](#)
  - [Participants](#)
  - [Instructors](#)
  - [Developers](#)
  - [Resources](#)
  - [Schoology](#)
- 

## High Quality Effective Professional Development

**eLearning Alabama** uses a Web-based model to provide effective professional development that leads to gains in teacher's content knowledge, improvements in their teaching practices and increases in the achievement of their students.

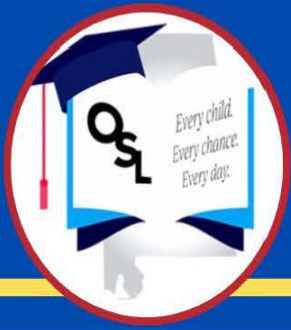
**eLearning Alabama** started in 2006 as Alabama's implementation of the e-Learning for Educators Initiative, a project funded through a federal Ready to Teach grant and multi-state collaboration between ten state education agencies and associated public broadcast stations. eLearning Alabama partners are the Alabama Department of Education Technology in Motion program and Alabama Public Television.

**eLearning Alabama** is an excellent way to move forward on your own professional development responsive to your schedule and needs.

1. No classes to attend!
2. No substitutes to find!
3. No travel funds to expend!

To see our schedule of classes, please click this link to see our course listing webpage.

[eLearning for Educators - About \(alsde.edu\)](http://alsde.edu)

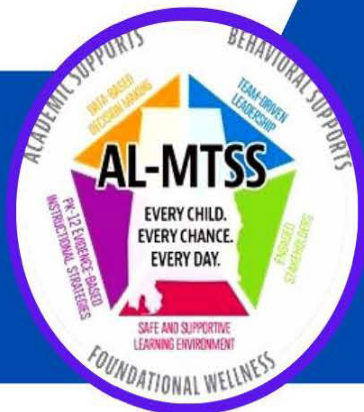
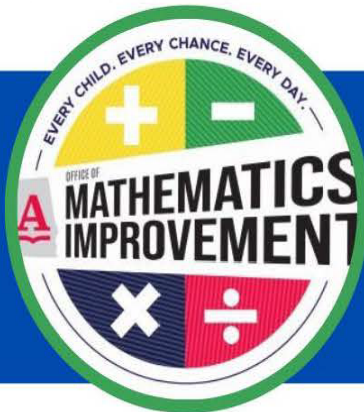
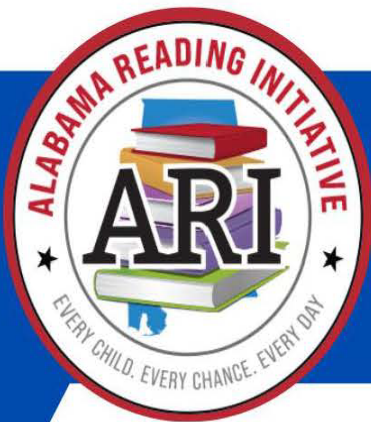


# The ALSDE Office of Student Learning presents *Partnerships for Progress in 2023-2024*

REGION 11

## Strong Leaders, Strong Readers

Strong Leaders, Strong Readers is designed to address the distinct needs of building-level administrators within Alabama schools catering to students in kindergarten through third-grade. These professional learning sessions will integrate insights derived from ARI's Student-Centered Coaching Labs, attended by local reading specialists. Furthermore, the discussions and educational components will be centered around fortifying participants' literacy knowledge, along with crafting frameworks and support mechanisms to increase student achievement. Participants will delve into the expectations concerning the extended implementation of the Alabama Literacy Act, conduct thorough data analysis, and leverage data insights to steer instructional decisions, thereby optimizing the outcomes of student learning in Alabama.



## Everyone Counts

Leaders Count, Students Count with an emphasis on AL-MTSS is designed to address the distinct needs of building level administrators within all Alabama schools catering to students in kindergarten through fifth grade. Through these professional learning sessions, we will develop the foundations required to build a strong awareness and response to mathematics instruction and data as well as to ensure that all students' needs are being met through our academic and behavioral structures. Through AL-MTSS we will refine our academic, behavioral, and foundational wellness supports to ensure success for ALL students. This year, an ACLD-PLU may be earned (pending approval) for participation in our Leaders Count, Students Count sessions.

<b>Session 1</b> 8:30-3:30 9/23-Covington County BOE 9/28-Enterprise City Schools Service Center	<b>Session 2</b> 8:30-3:30 12/5-Covington County BOE 12/7-Enterprise City Schools Service Center	<b>Session 3</b> 8:30-3:30 2/6-Covington County BOE 2/8-Enterprise City Schools Service Center	<b>Session 4</b> 8:30-3:30 3/14-Covington County BOE 3/19-Enterprise City Schools Service Center
--	--	--	--





It's a brand new school year, and in Region 11, we have some new administrators. Your ATiM Specialist, Dr. Charisse Snell, is here to serve you! I just want to share some helpful information with you about Alabama Technology in Motion. I also want to extend this information to seasoned administrators who don't know about our services. Click on the graphics below to get a glimpse of a few sessions that are offered.



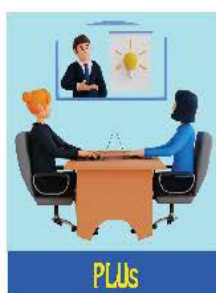
Google Tools



Digital Literacy



Computer Science



PLUs



Schoolology

## ALABAMA TECHNOLOGY IN MOTION

Alabama Technology in Motion (ATiM) provides **FREE** onsite job-embedded professional development for teachers to promote the use of technology in teaching and learning. The program offers services, materials and training that support teachers' professional growth in effective teaching practices, the creation of technology-rich learning environments and project-based learning.



(334) 783-9356



csnell@atim.us



[https://bit.ly/tu\\_tim](https://bit.ly/tu_tim)

# STEM PLG

Let's continue to inspire future generations to pursue science,  
✦ technology, engineering, and math in order to build a bright future.



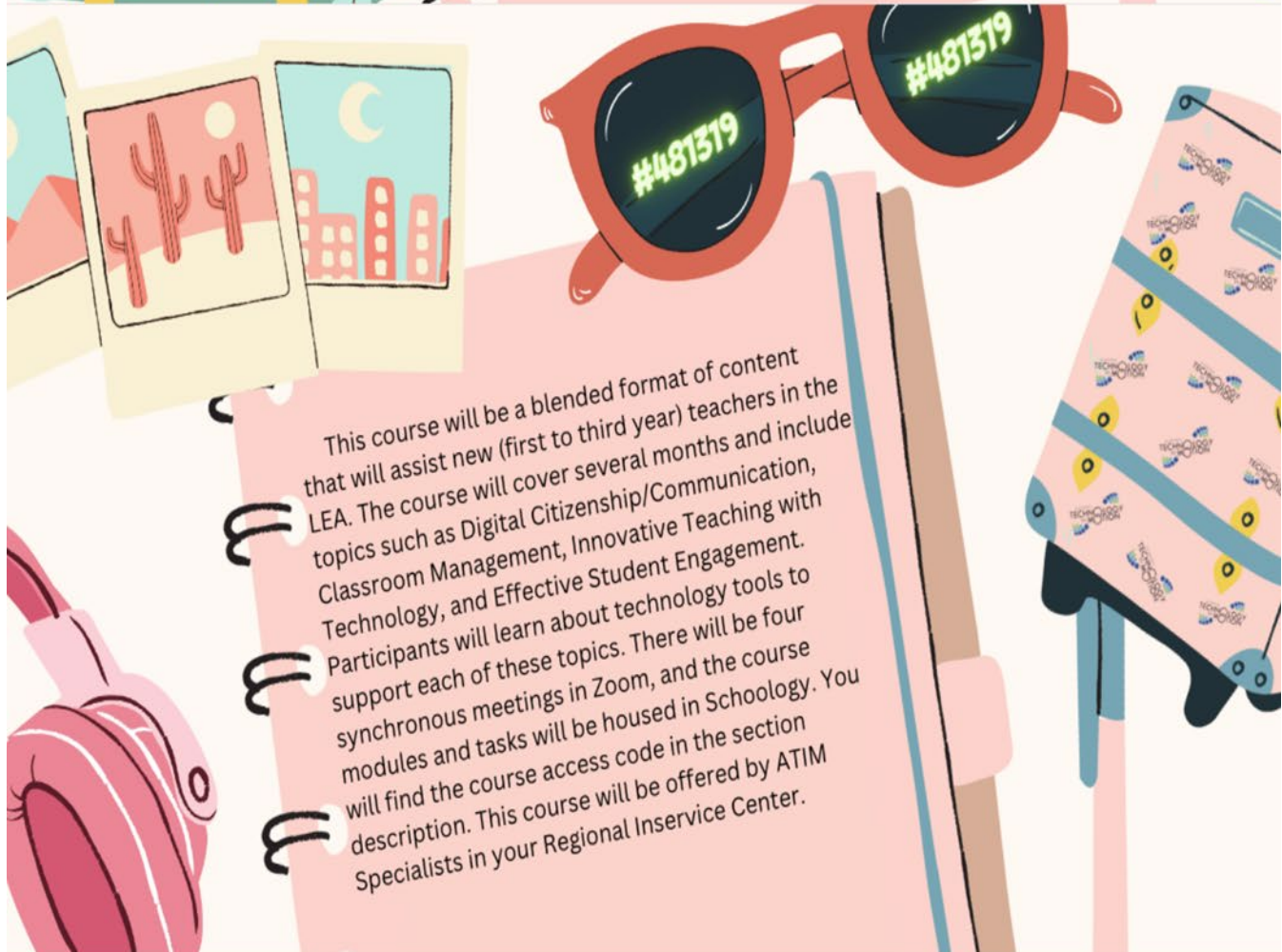
**JANUARY 2024**

## FOR MORE INFO:

✦ Contact: Dr. Charisse Snell

(334) 763-9356  
csnell@atim.us





# Subject: Save the Date: Gulf Coast Conference on the Teaching of Writing 2024

## Gulf Coast Conference on the Teaching of Writing

July 1 - 4, 2024

Perdido Beach Resort  
Orange Beach, Alabama



We are excited to announce the upcoming Gulf Coast Conference on the Teaching of Writing, scheduled to take place at the Perdido Beach Resort in Orange Beach, Alabama. Save the date for an inspiring and enriching experience from July 1 to July 4, 2024.

### Event Details:

- **Conference Name:** Gulf Coast Conference on the Teaching of Writing 2024
- **Date:** July 1 - 4, 2024
- **Location:** Perdido Beach Resort, Orange Beach, Alabama

Join us for this engaging conference where educators, writers, and literacy advocates will come together to share innovative ideas, best practices, and research in the field of writing instruction. The Gulf Coast Conference on the Teaching of Writing promises to be a unique opportunity for professional development, collaboration, and networking.

More details, including keynote speakers, session topics, and registration information, will be provided in the coming months. Be sure to mark your calendars and stay tuned for updates as we prepare for an enriching and memorable event.

We look forward to welcoming you to Orange Beach for the Gulf Coast Conference on the Teaching of Writing in 2024!



# Unified Insights Regional Trainings

A total of four LEA representatives from each district should attend the designated session(s) in their region. Session attendance is limited to 25 participants per session. Participants will need to have completed a successful login to Unified Insights prior to the session.  
PSPL Course #313517



## UNA Regional Training

Thursday January 18th

[Session 1: 8:30am-10:30am](#)

[Session 2: 11:00am-1:00pm](#)

[Session 3: 1:30pm-3:30pm](#)

## UAB Regional Training

Tuesday January 23rd

[Session 1: 8:30am-10:30am](#)

[Session 2: 11:00am-1:00pm](#)

[Session 3: 1:30pm-3:30pm](#)

## AU Regional Training

Wednesday January 24th

[Session 1: 8:30am-10:30am](#)

[Session 2: 11:00am-1:00pm](#)

[Session 3: 1:30pm-3:30pm](#)

## Athens Regional Training

Tuesday January 16th

[Session 1: 8:30am-10:30am](#)

[Session 2: 11:00am-1:00pm](#)

[Session 3: 1:30pm-3:30pm](#)

## UM Regional Training

Monday January 22nd

[Session 1: 8:30am-10:30am](#)

[Session 2: 11:00am-1:00pm](#)

[Session 3: 1:30pm-3:30pm](#)

## USA Regional Training

Monday January 29th

[Session 1: 8:30am-10:30am](#)

[Session 2: 11:00am-1:00pm](#)

[Session 3: 1:30pm-3:30pm](#)

## AAMU Regional Training

Wednesday January 17th

[Session 1: 8:30am-10:30am](#)

[Session 2: 11:00am-1:00pm](#)

[Session 3: 1:30pm-3:30pm](#)

## JSU Regional Training

Wednesday January 24th

[Session 1: 8:30am-10:30am](#)

[Session 2: 11:00am-1:00pm](#)

[Session 3: 1:30pm-3:30pm](#)

## UA Regional Training

Monday January 22nd

[Session 1: 8:30am-10:30am](#)

[Session 2: 11:00am-1:00pm](#)

[Session 3: 1:30pm-3:30pm](#)

## ASU Regional Training

Tuesday January 23rd

[Session 1: 8:30am-10:30am](#)

[Session 2: 11:00am-1:00pm](#)

[Session 3: 1:30pm-3:30pm](#)

## Troy Regional Training

Tuesday January 30th

[Session 1: 8:30am-10:30am](#)

[Session 2: 11:00am-1:00pm](#)

[Session 3: 1:30pm-3:30pm](#)

Wednesday January 31st

[Session 1: 8:30am-10:30am](#)

[Session 2: 11:00am-1:00pm](#)

[Session 3: 1:30pm-3:30pm](#)



Sessions are repeated content and you should only register for ONE session.

- Training locations noted in each section in PSPL.
- Session 1 will be from 8:30a-10:30a
- Session 2 will be from 11:00a-1:00p
- Session 3 will be from 1:30p-3:30p
- We recommend arriving 15-30 minutes prior to the start time to work through any technical issues.