

Date: 12-16-2020

To: All Plan Holders

Subject: ADDENDUM NO. 3

Project: CENTER FOR MATERIALS AND MANUFACTURING
SCIENCES, TROY UNIVERSITY MAIN CAMPUS-TROY ALABAMA

Job #: SSL# 18144
BC# 2020416
PSCA#: 006P



From: Cody Smith

The plans dated November 17, 2020 and Specifications dated November 2020 of the subject project, and any subsequent addenda are amended as follows: (Where there are conflicts between the plans and specifications and the addendum, this addendum shall govern)

Item 1: Refer to Sheet A2.1 First Floor:

- 1102 Microscopy Lab Casework shifted South
- 1104 Spectroscopy Lab Casework Elevation Modified
- 1107 Medical Polymer Processing Lab Add Casework Elevation and add two upper cabinets
-

Item 2: Refer to Sheet A10.1 Furniture Fixtures & Equipment Plans

- Fixed Seating in Board Room shall be OFOI

Item 3: Refer to Sheet A10.2 Lab Elevations:

- Detail 11 Modified elevation to reflect casework.
- Detail 12 Casework shifted South

Item 4: Refer to Sheet A10.3 Lab Elevations:

- Add Detail 17

Item 5: Refer to Electrical Drawing E001:

- Clarified locations and routing of secondary power and data conduits entering building

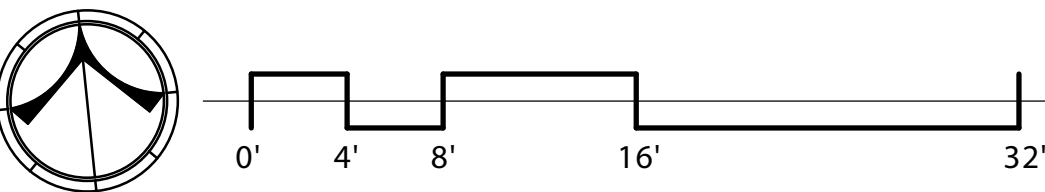
Item 6: Refer to Electrical Drawing E003:

- Added approved equals to lighting fixture schedule
- Add P1 & P4 Fixture

Item 7: Refer to Electrical Drawing E005:

- Deleted a fixture in Lab 1218

End of Addendum No. 3



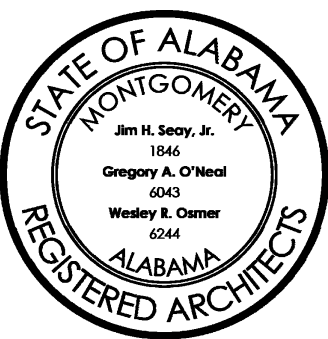
1. TYPICAL AT COLUMNS AND STRUCTURAL ELEMENTS PROTRUDING FROM WALLS: PROVIDE METAL STUD AND GYPSUM WALL BOARD FURR OUT AS REQUIRED TO FULLY CONCEAL.
2. REFER TO LIFE SAFETY PLAN FOR LOCATIONS OF FIRE EXTINGUISHERS WITH RECESSED CABINETS.

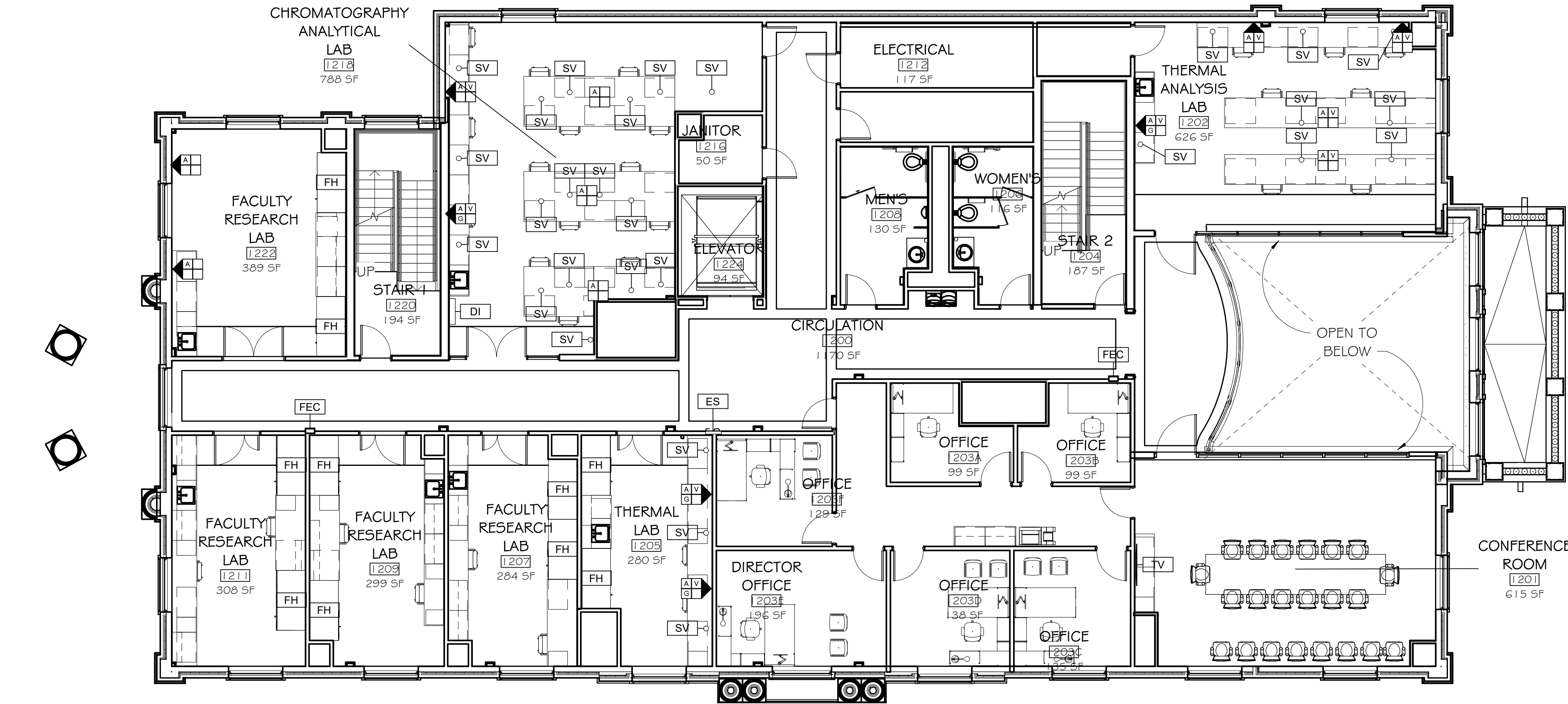
Job Number	18144
Date	11/17/2020
Drawn By	CS,JB,DB,LG
Checked By	JS, FL

CENTER FOR MATERIALS AND
MANUFACTURING SCIENCES

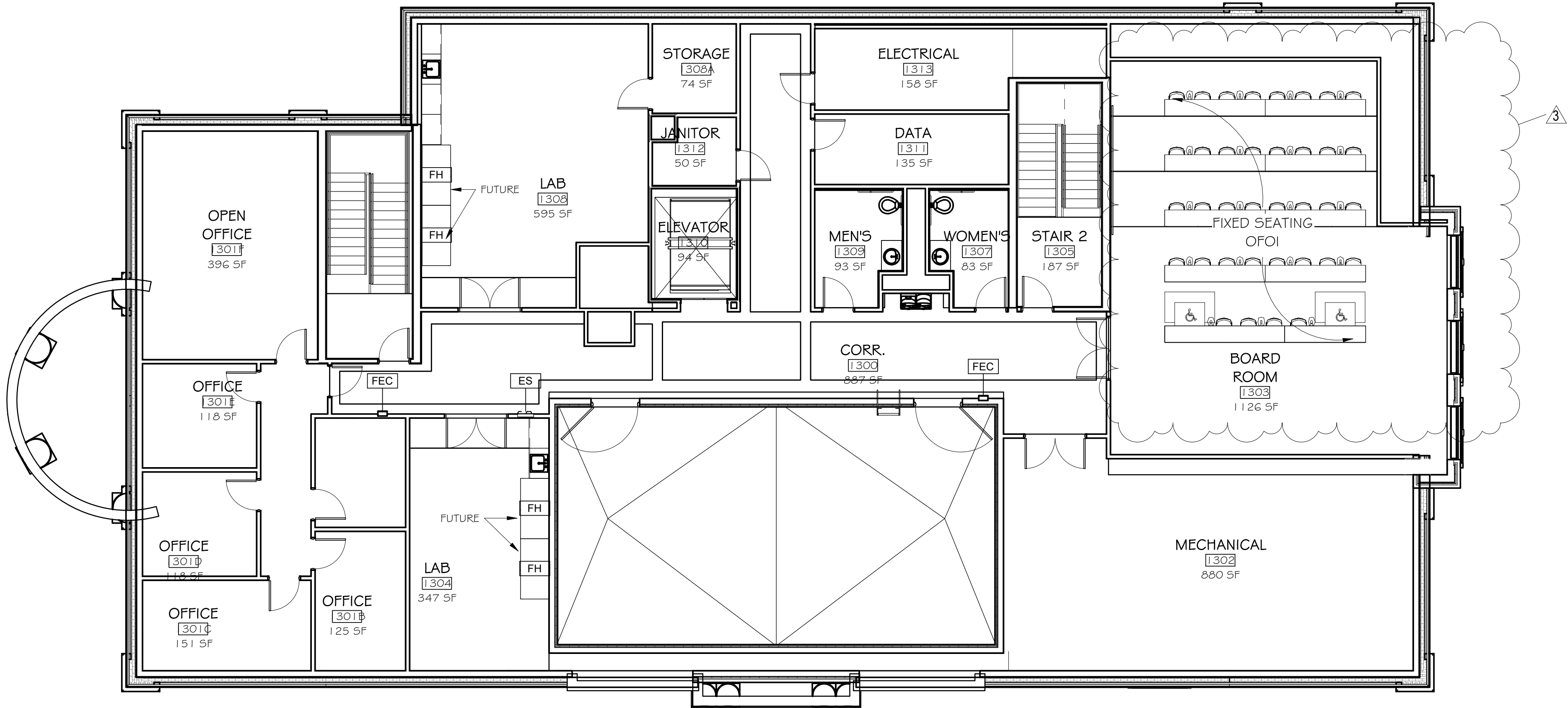
TROY UNIVERSITY | TROY, AL

A2.1





1 SECOND FLOOR EQUIPMENT PLAN
1/8" = 1'-0"



2 ATTIC FLOOR EQUIPMENT PLAN - ALTERNATE
1/8" = 1'-0"

EQUIPMENT LEGEND

LAB UTILITY TAG:

WALL MOUNTED LOCATION (TAG WITHOUT ARROWS NOTATES DECK MOUNTED VALVES)

COMPRESSED AIR

VACUUM

W = HOT & COLD WATER
Wc= COLD WATER

NATURAL GAS

FH FUME HOOD (OFOI)

SV SNORKEL VENT (OFOI)

FL FLAME CABINET (OFOI)

AC ACID CABINET (OFOI)

SF STORAGE ROOM FLAME CABINET (OFOI)

FR REFRIGERATOR (OFOI)

FE FREEZER (OFOI)

ES EMERGENCY SHOWER (CFCI)

FEC FIRE EXTINGUISHER CABINET (CFCI)

NT NITROGEN TANK (OFOI)

TV TELEVISION (OFOI)

KB KEY BOX (CFCI)

DI DEIONIZED WATER SYSTEM (CFCI)
BASIS OF DESIGN: LABCONCO WATERPRO POLISHING SYSTEM, MODEL: 900521

DB GLASS DISPLAY BOARD (CFCI) SPEC SECTION 10 1200

FUME HOOD UTILITIES (EACH):

- COMPRESSED AIR
- VACUUM
- NATURAL GAS
- COLD WATER

Rev.	Description	Date
2	Add. 2	12/11/2020
3	Add. 3	12/16/2020

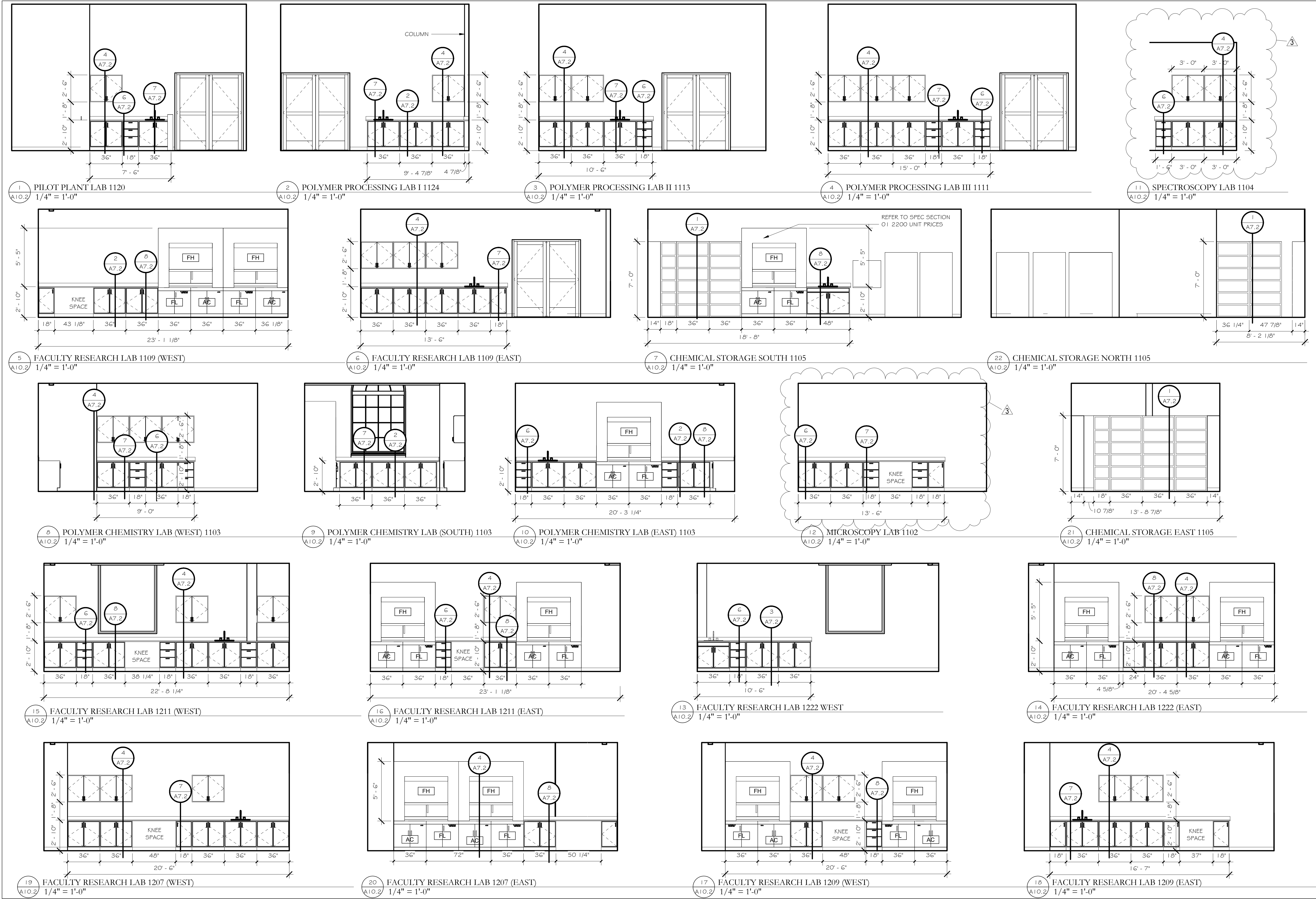
Job Number	18144
Date	11/17/2020
Drawn By	CS,JB,DB,LG
Checked By	JS, FL

Project Title	CENTER FOR MATERIALS AND MANUFACTURING SCIENCES TROY UNIVERSITY TROY, AL
---------------	---

Sheet Title	FURNITURE, FIXTURES & EQUIPMENT PLANS
-------------	---------------------------------------

Sheet Number	A10.1
--------------	-------





Rev.	Description	Date
3	Add. 3	12/16/2020

Job Number	18144
Date	11/17/2020
Drawn By	CS,JB,DB,LG
Checked By	JS,FL

Project Title

CENTER FOR MATERIALS AND
MANUFACTURING SCIENCES

TROY UNIVERSITY | TROY, AL

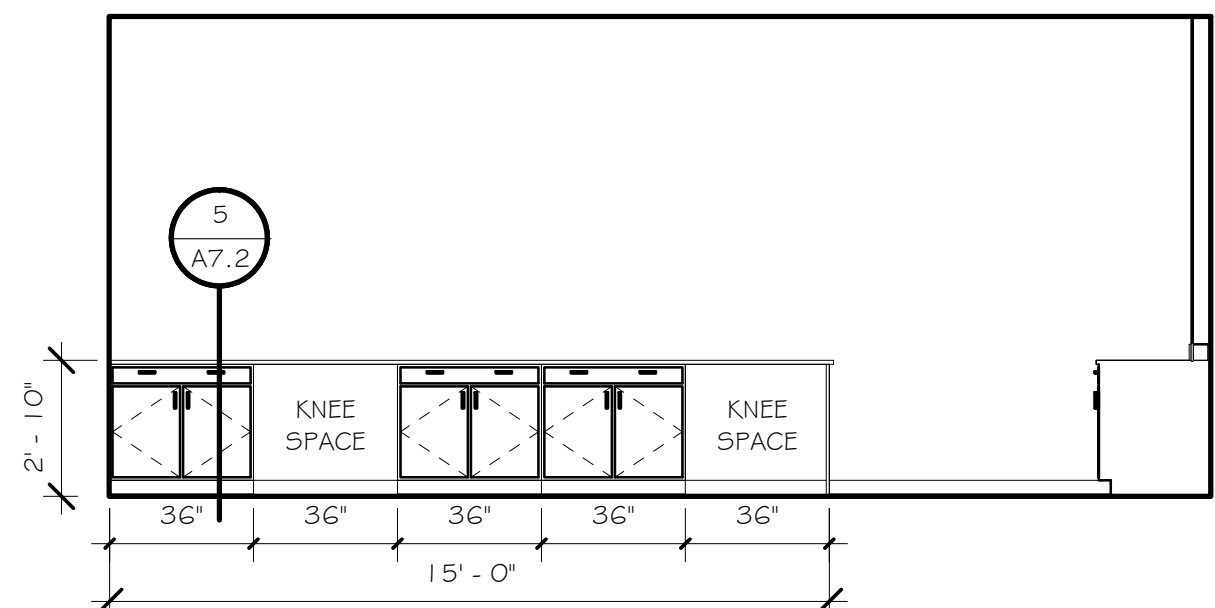
Sheet Title

LAB ELEVATIONS

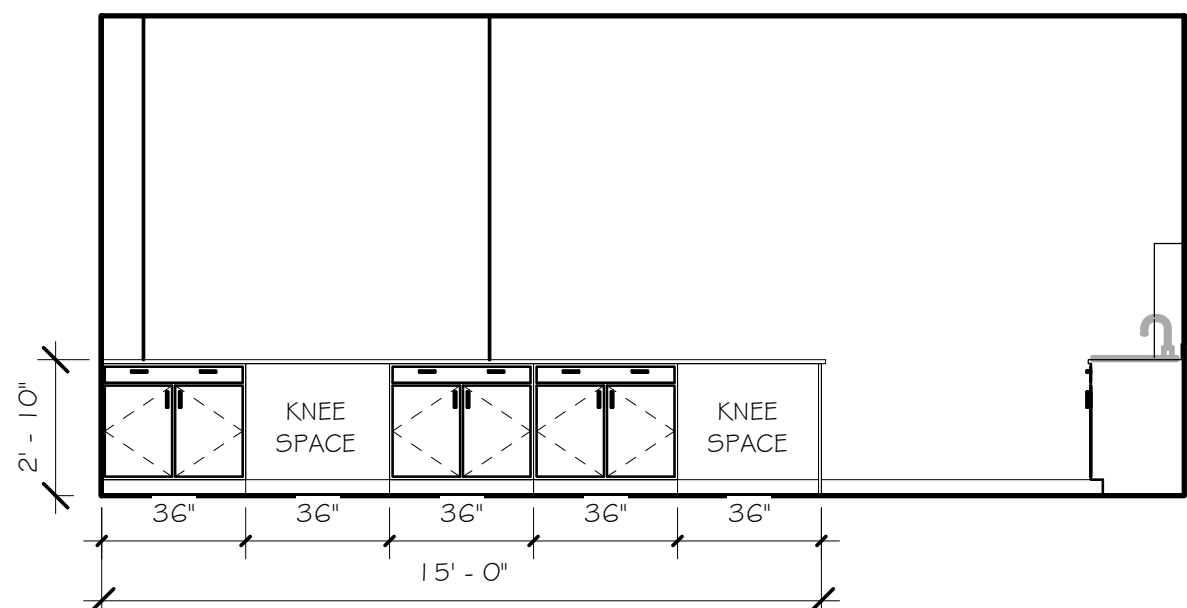
Sheet Number

A10.2

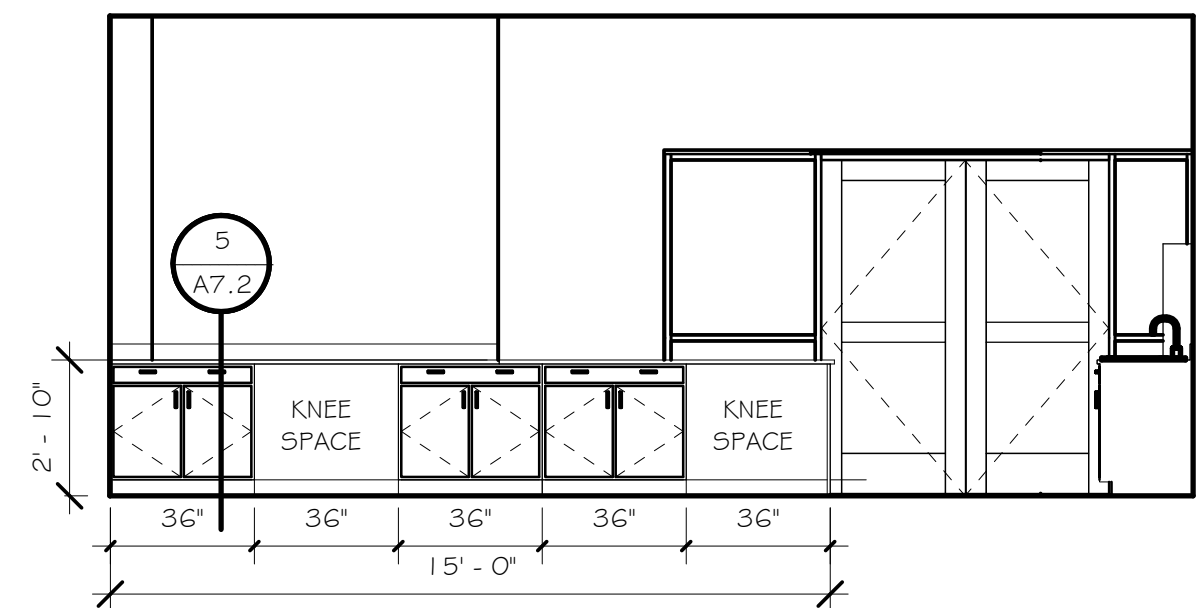




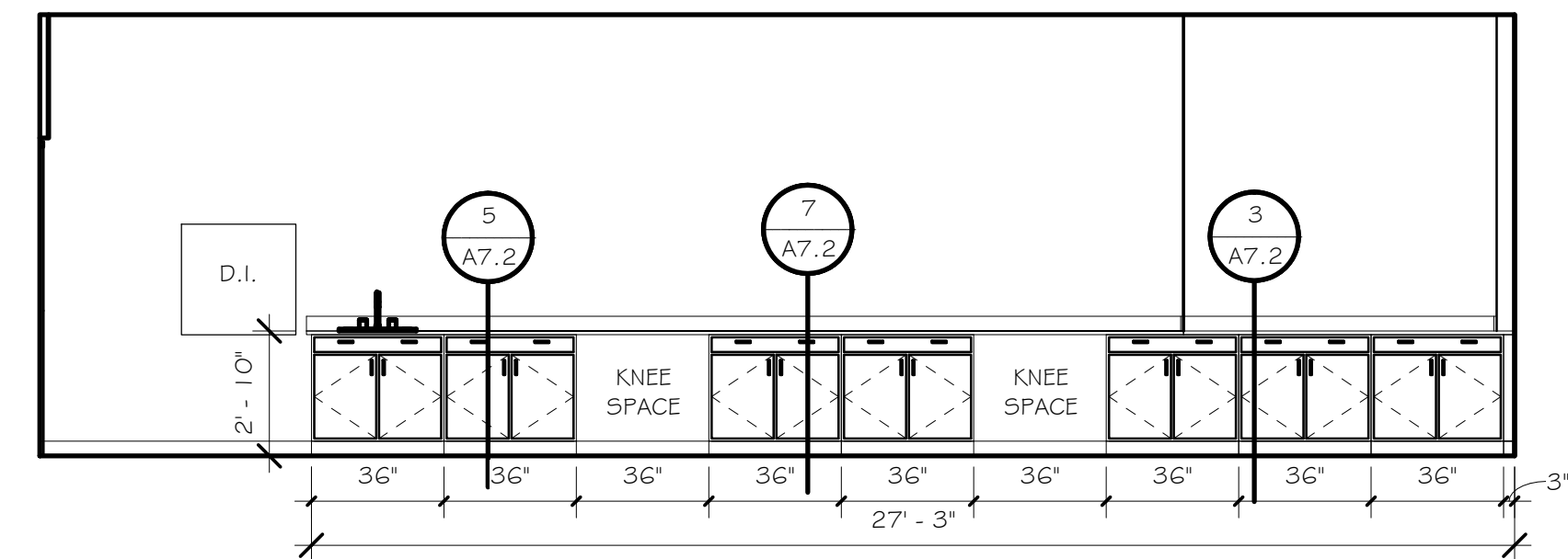
1 CHROMATOGRAPHY / ANALYTICAL LAB (SOUTH 1) 1218
1/4" = 1'-0"



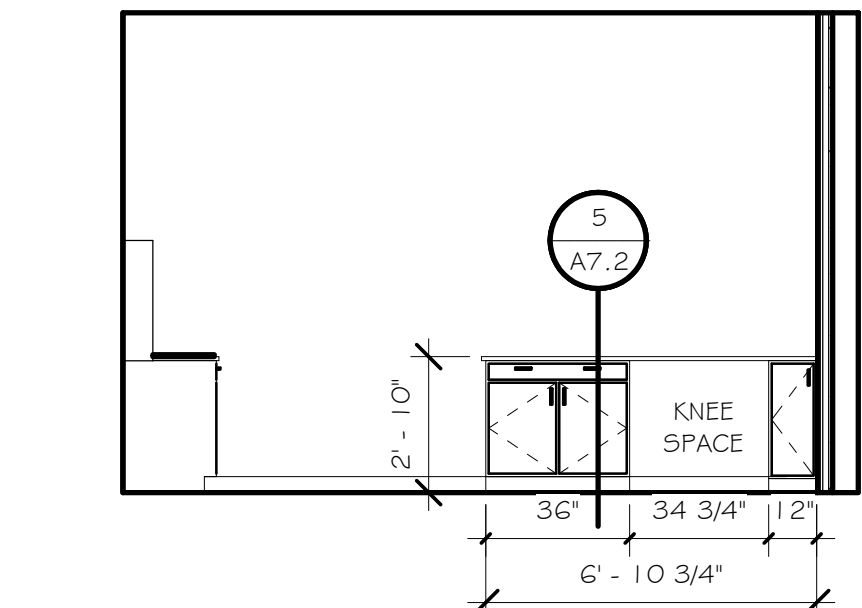
2 CHROMATOGRAPHY / ANALYTICAL LAB (SOUTH 2) 1218
1/4" = 1'-0"



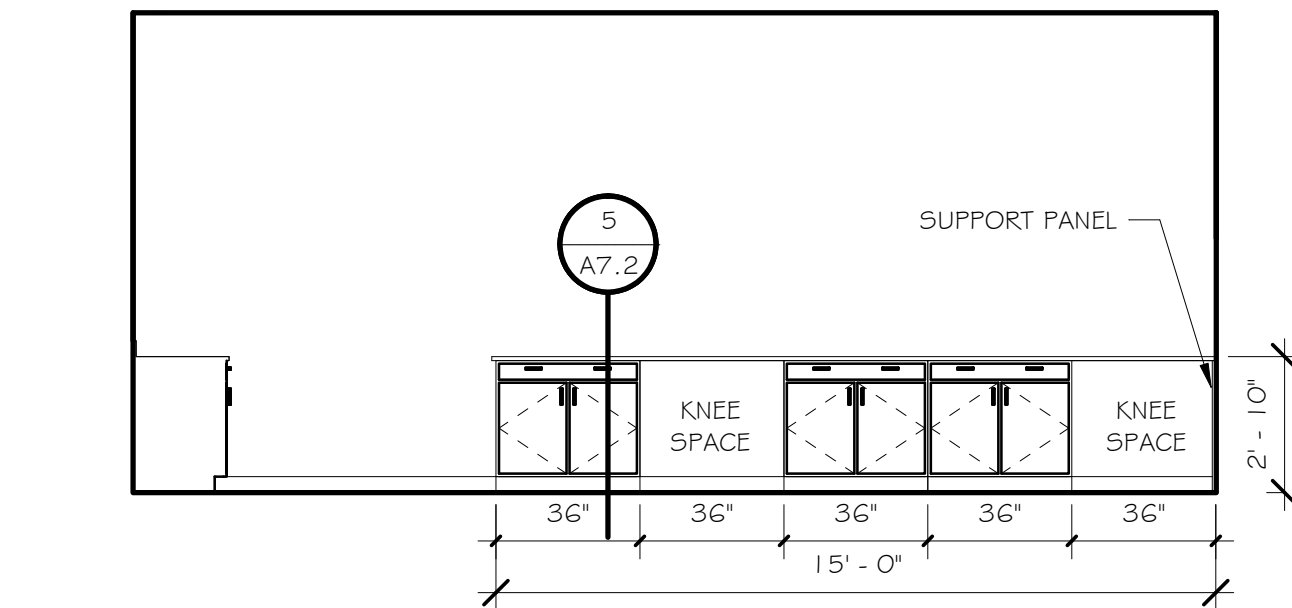
3 CHROMATOGRAPHY / ANALYTICAL LAB (SOUTH 3) 1218
1/4" = 1'-0"



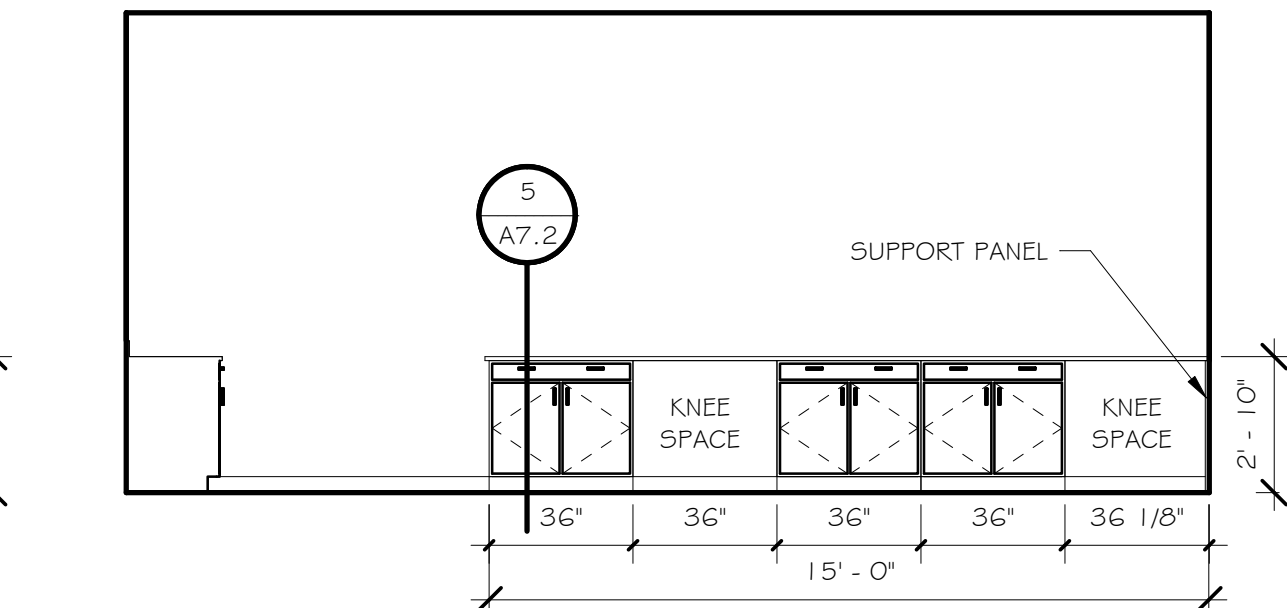
7 CHROMATOGRAPHY / ANALYTICAL LAB 1218
1/4" = 1'-0"



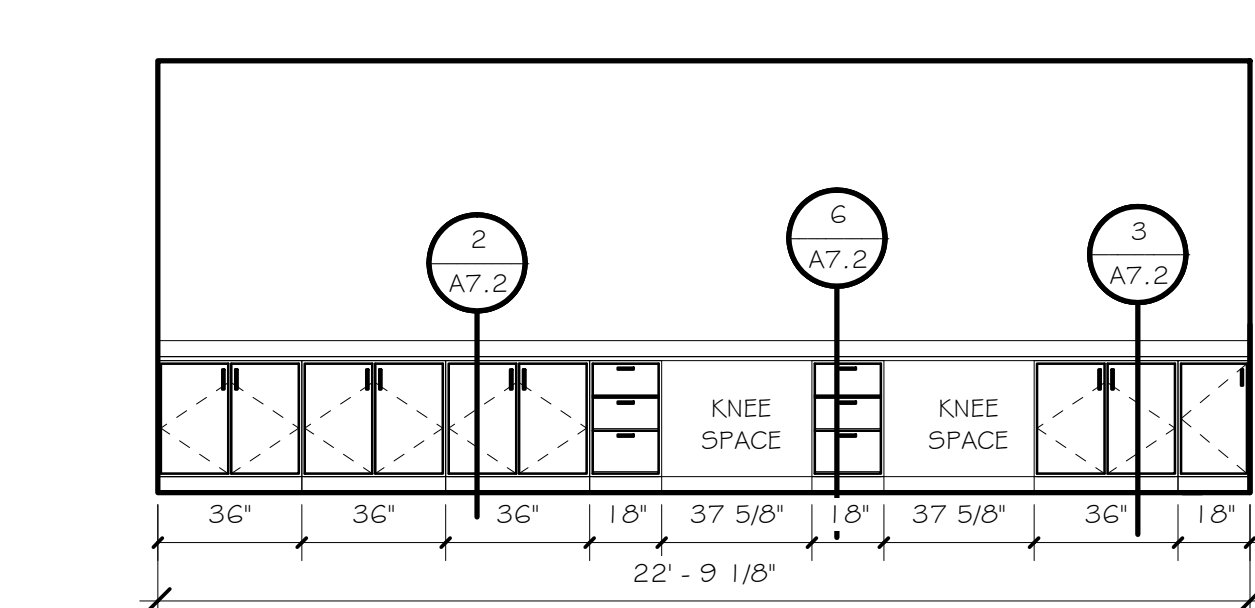
4 CHROMATOGRAPHY / ANALYTICAL LAB (NORTH 1) 1218
1/4" = 1'-0"



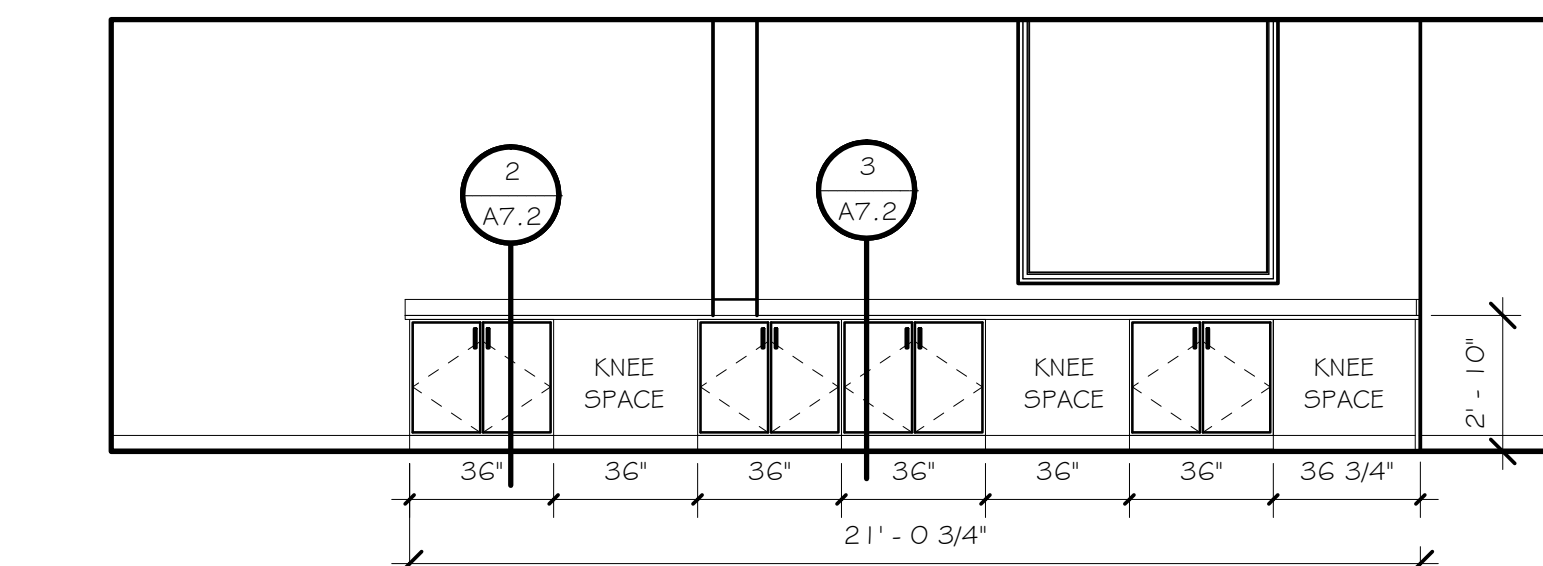
5 CHROMATOGRAPHY / ANALYTICAL LAB (NORTH 2) 1218
1/4" = 1'-0"



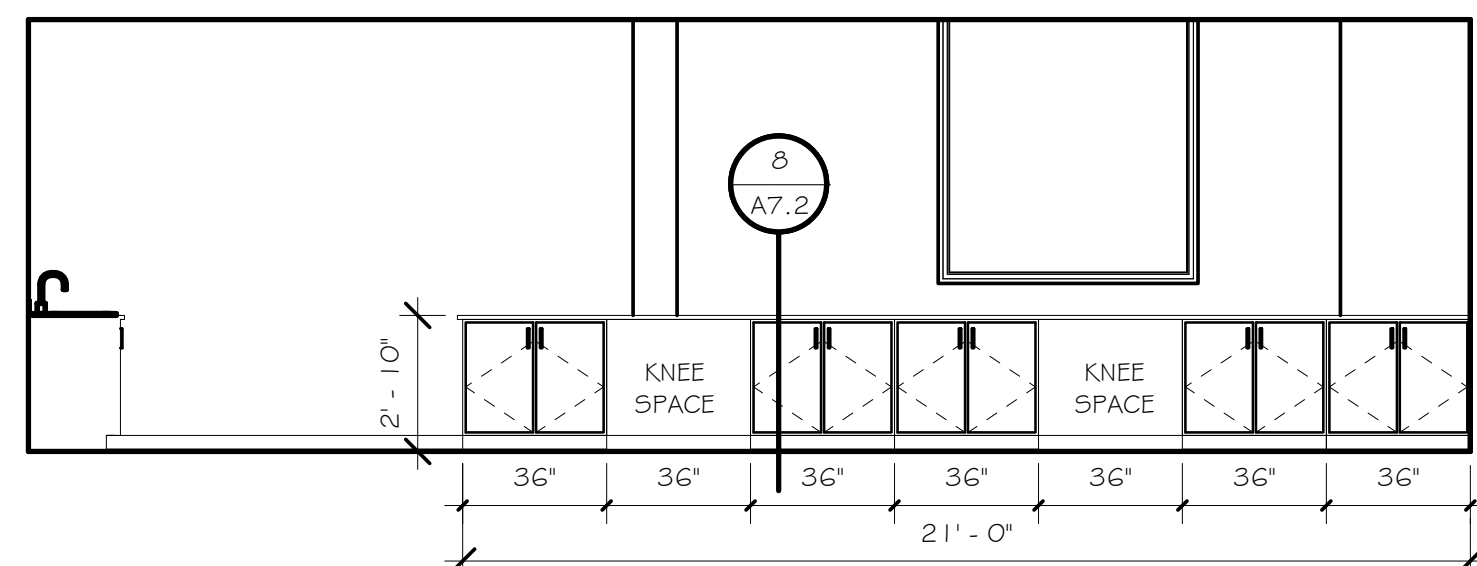
6 CHROMATOGRAPHY / ANALYTICAL LAB (NORTH 3) 1218
1/4" = 1'-0"



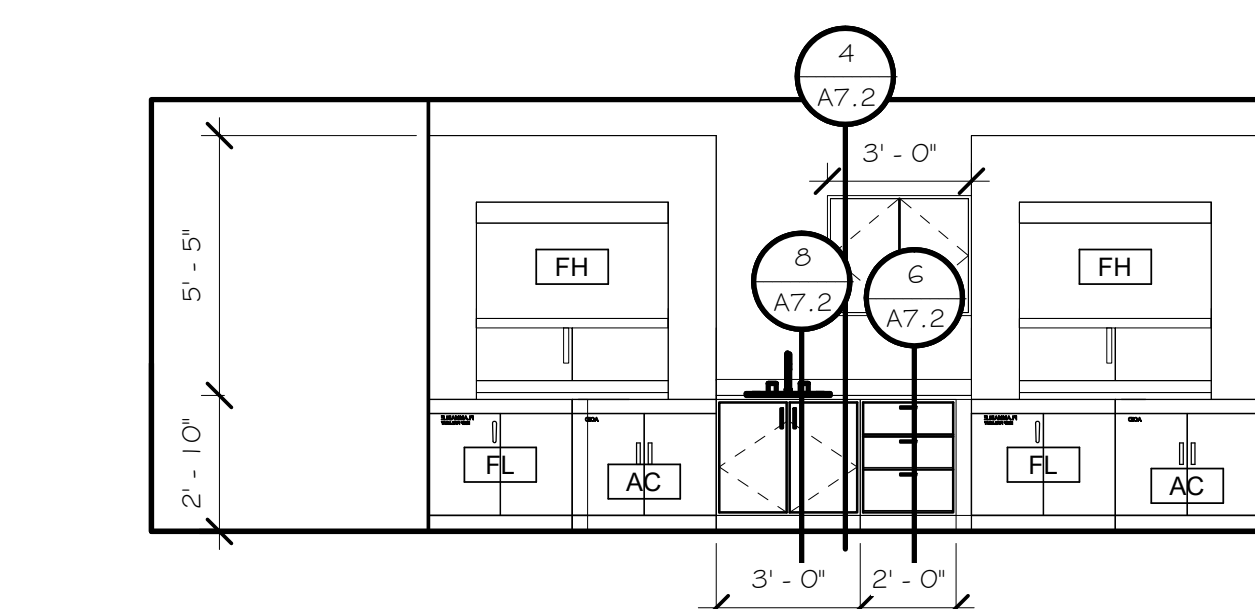
15 THERMAL LAB (EAST) 1205
1/4" = 1'-0"



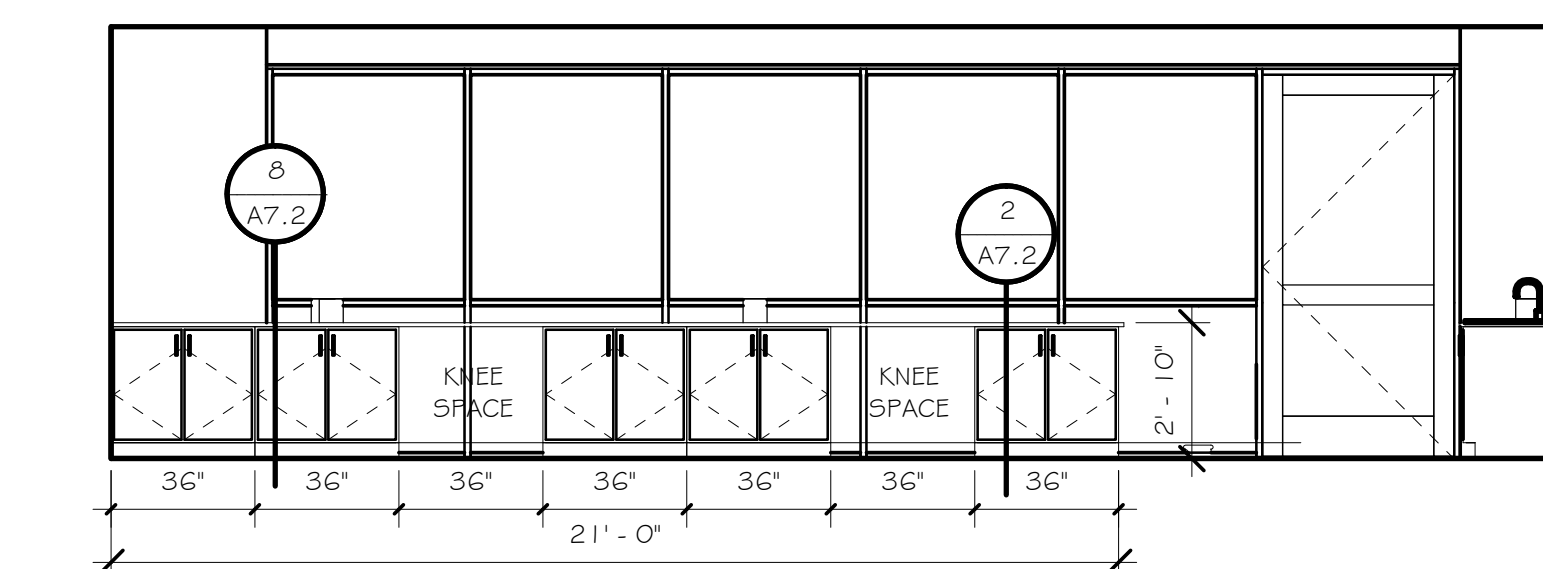
9 THERMAL ANALYSIS LAB (NORTH 1) 1202
1/4" = 1'-0"



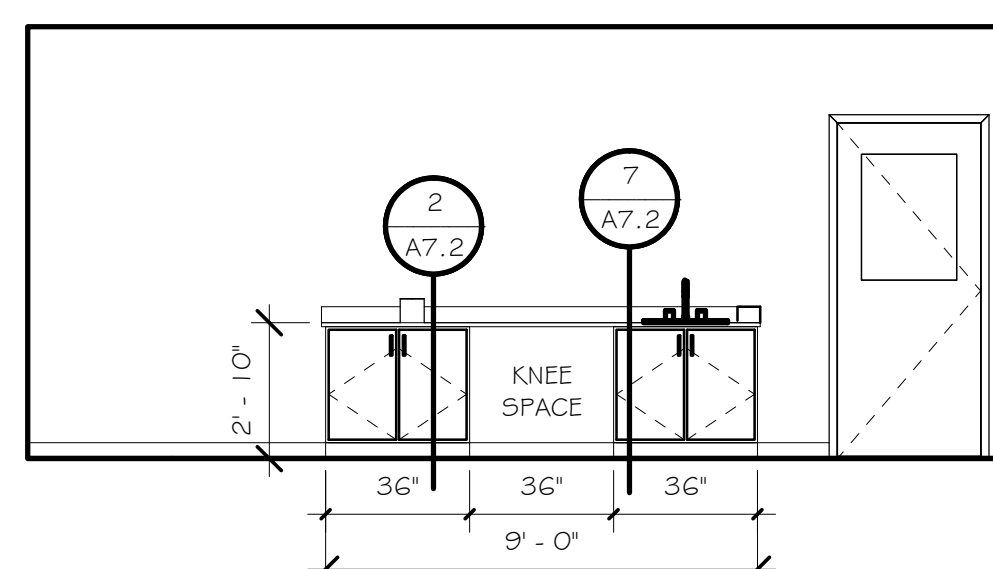
11 THERMAL ANALYSIS LAB (NORTH 3) 1202
1/4" = 1'-0"



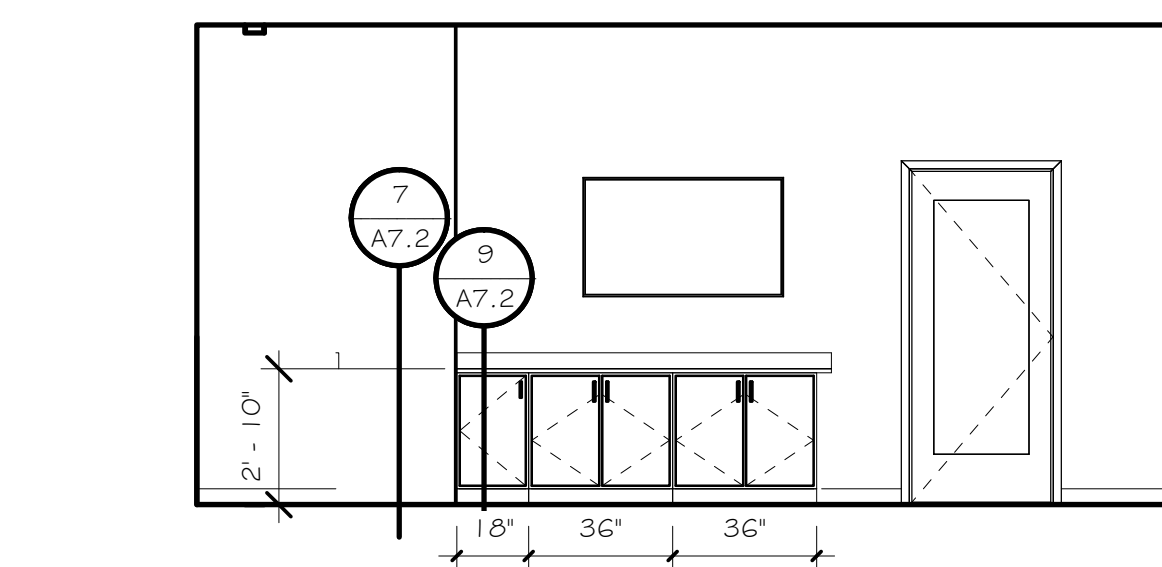
16 THERMAL LAB (WEST) 1205
1/4" = 1'-0"



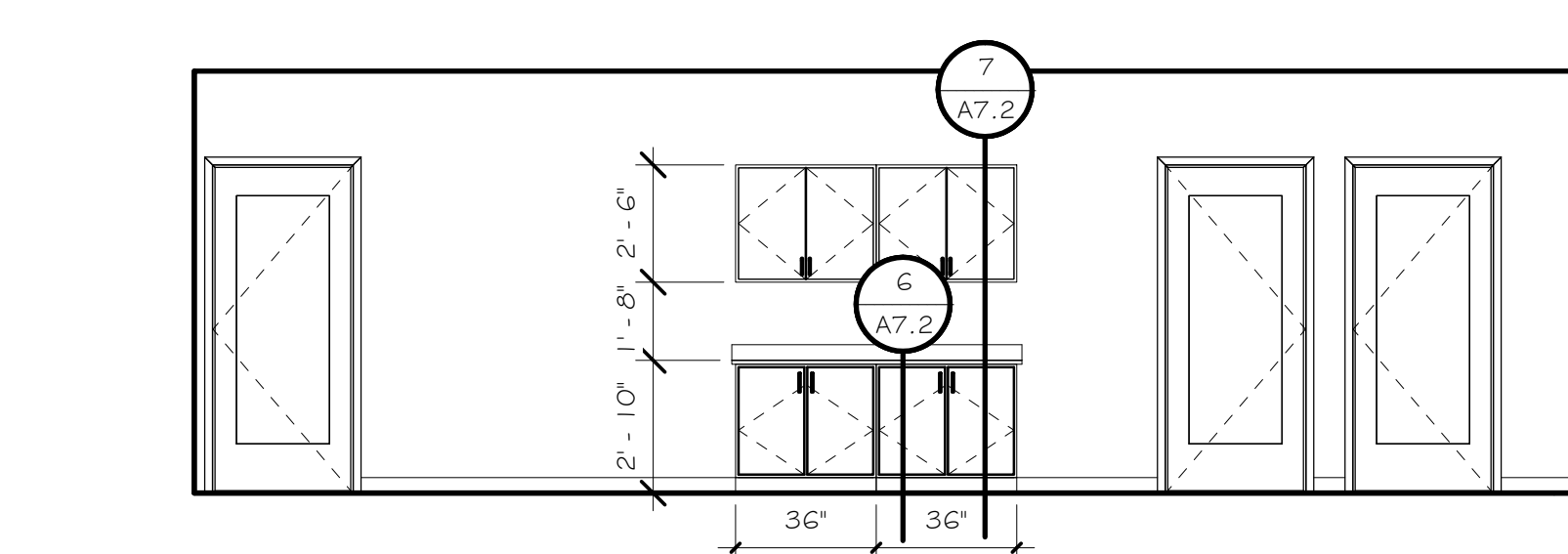
12 THERMAL ANALYSIS LAB (SOUTH 1) 1202
1/4" = 1'-0"



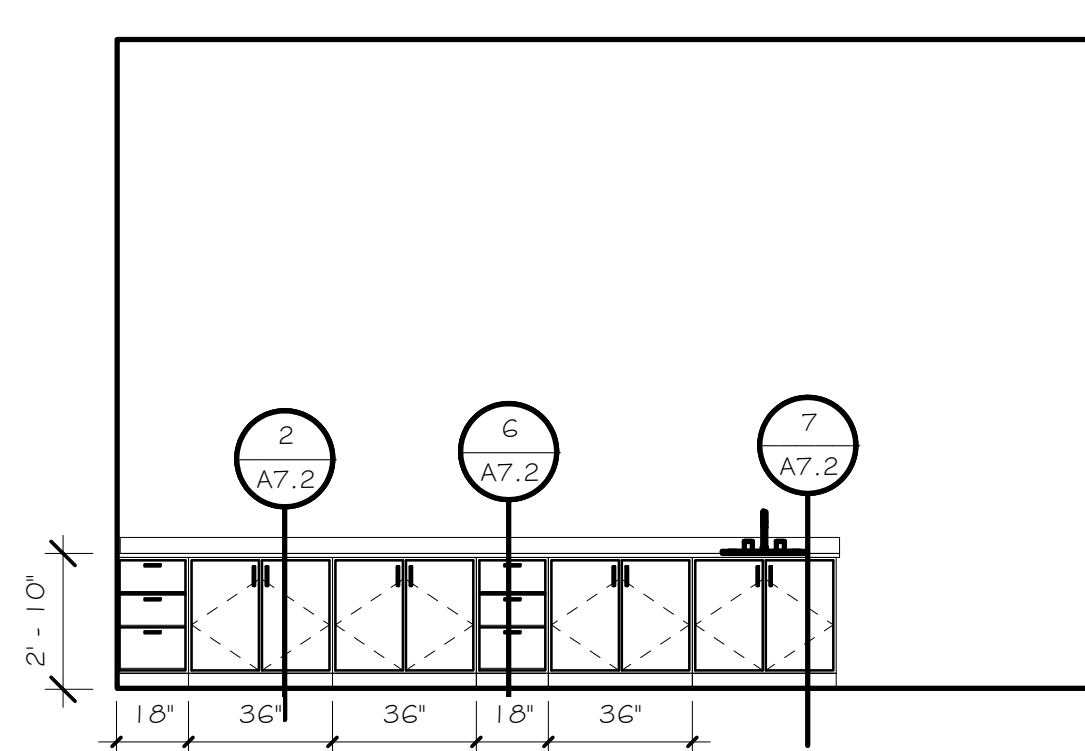
14 THERMAL ANALYSIS LAB (WEST) 1202
1/4" = 1'-0"



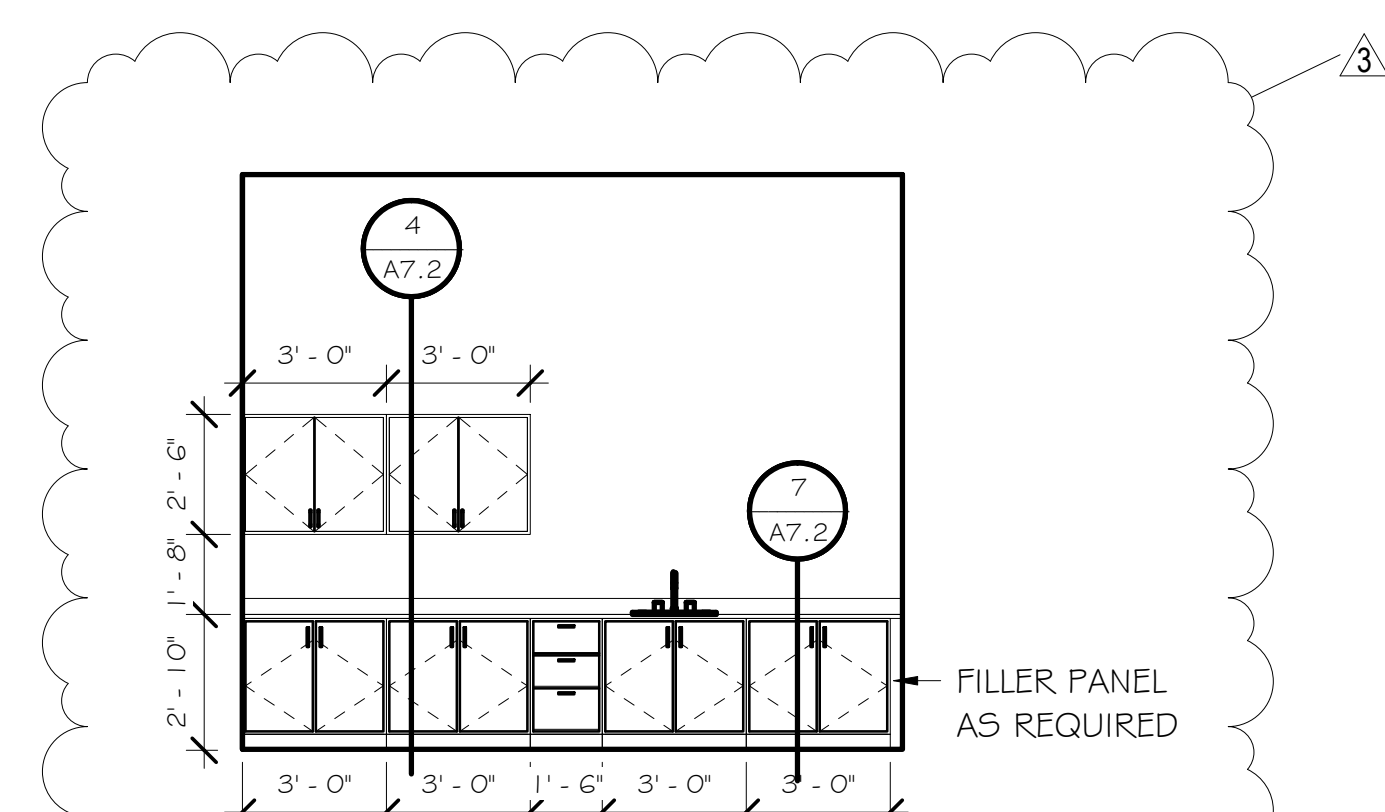
10 CONFERENCE ROOM CASEWORK ELEVATION 1201
1/4" = 1'-0"



13 CIRCULATION CASEWORK 1203
1/4" = 1'-0"



8 MECHANICAL TESTING LAB 1101
1/4" = 1'-0"



17 MEDICAL POLYMER PROCESSING LAB 1107
1/4" = 1'-0"

Rev.	Description	Date
3	Add. 3	12/16/2020

Job Number	18144
Date	11/17/2020
Drawn By	CS,JB,DB,LG
Checked By	JS,FL

Project Title

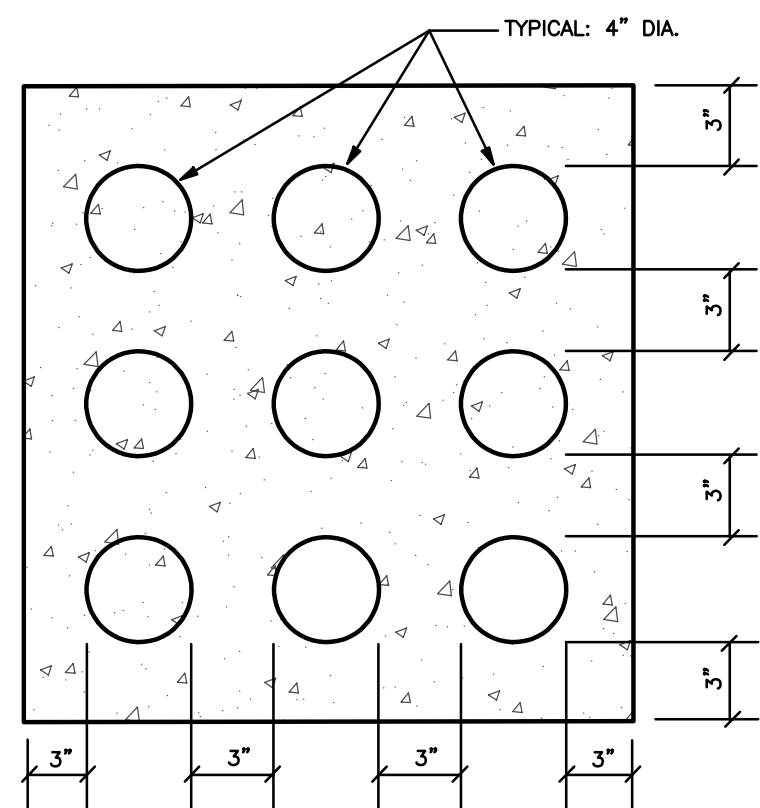
CENTER FOR MATERIALS AND
MANUFACTURING SCIENCES
TROY UNIVERSITY | TROY, AL

Sheet Title
LAB ELEVATIONS

Sheet Number

A10.3





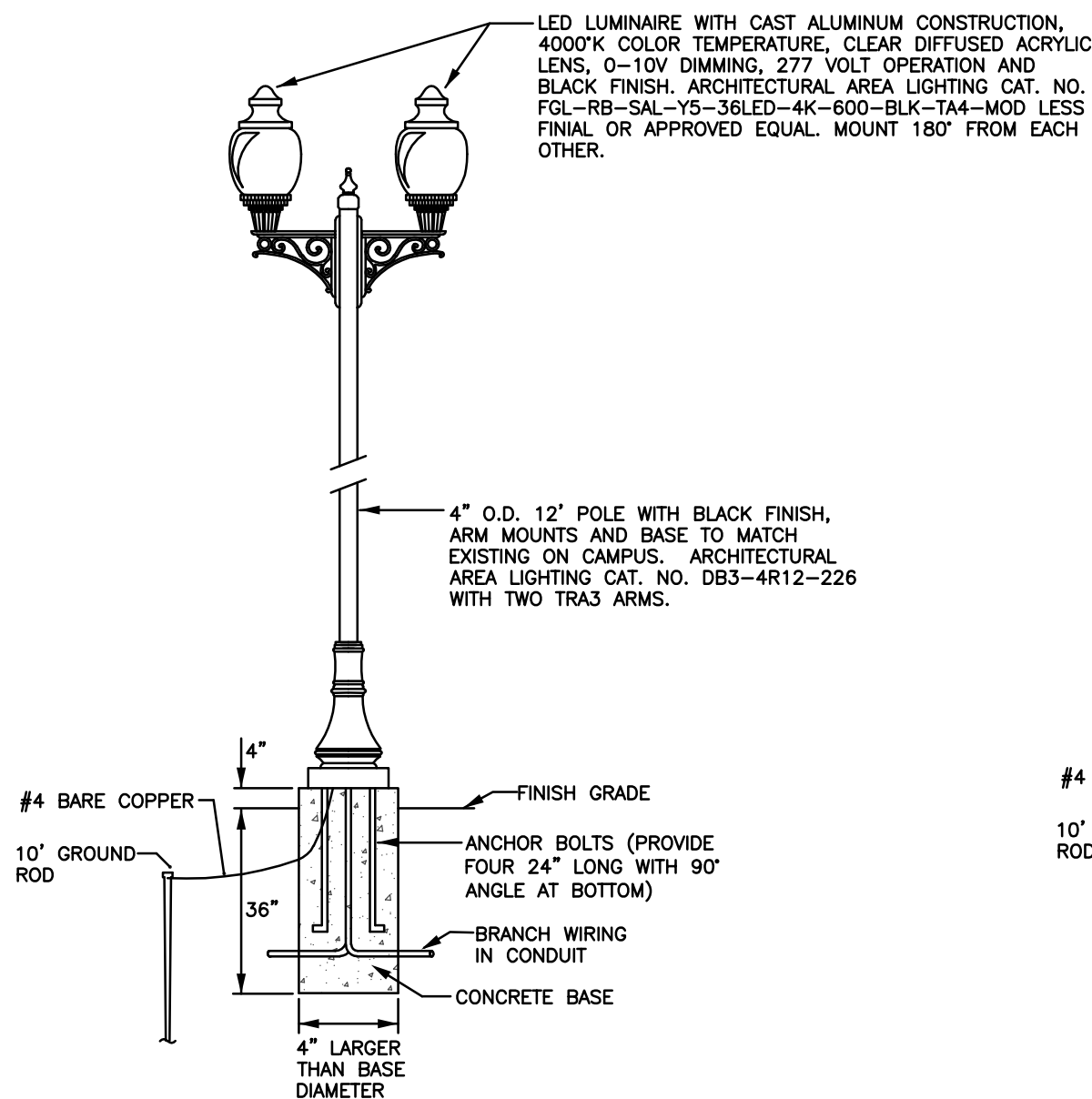
DUCT BANK NOTES:


1. CONCRETE SHALL BE 3,000 P.S.I. @ 28 DAYS OR AS SPECIFIED.
2. PROVIDE REINFORCING RODS ON TOP OF DUCTS WHEN CROSSING OR PLACED IN ROADWAYS.
3. MINIMUM COVER TO TOP OF CONCRETE SHALL BE 24".
4. NON-FERROUS TIE WIRES TO BE IMBEDDED IN DUCT BED CONCRETE.
5. THE DUCT BANK FOR SECONDARY POWER CONDUCTORS FROM TRANSFORMER TO SE SWBD SHALL HAVE NINE 4" DIAMETER DUCTS (3 HIGH x 3 WIDE) WITH SAME SPACING AS DETAIL.
6. THE DUCT BANK FOR SECONDARY POWER CONDUCTORS FROM TRANSFORMER TO PANEL CH SHALL HAVE FOUR 4" DIAMETER DUCTS (2 HIGH x 2 WIDE) WITH SAME SPACING AS DETAIL.
7. THE DUCT BANK FOR GENERATOR FEED FROM GENERATOR TO DOCKING STATION AND DOCKING STATION TO BUILDING EMERGENCY WIRING GUTTER SHALL HAVE FOUR 4" DIAMETER DUCTS (2 HIGH x 2 WIDE) WITH SAME SPACING AS DETAIL.

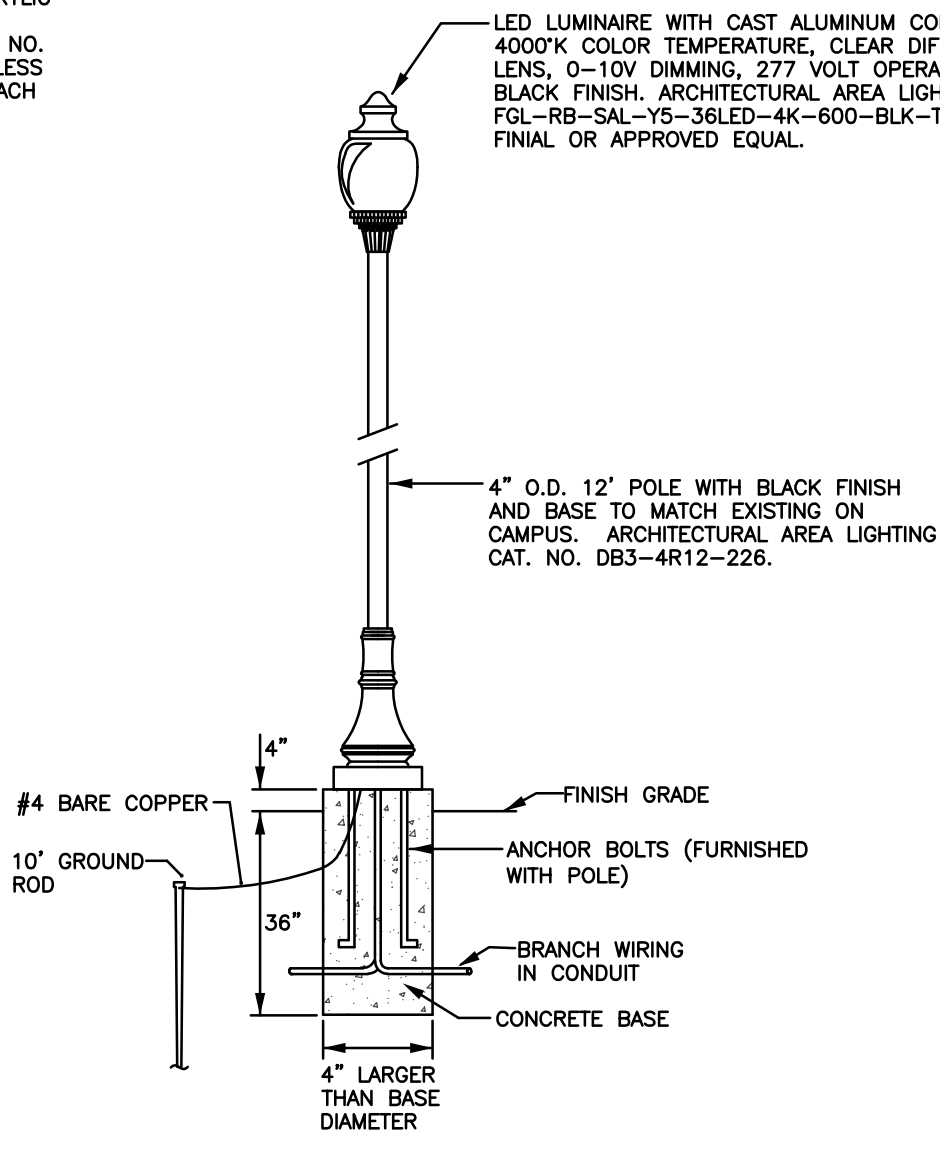
POWER DUCT BANK DETAIL
SCALE: NOT TO SCALE

LEGEND (THIS SHEET ONLY):

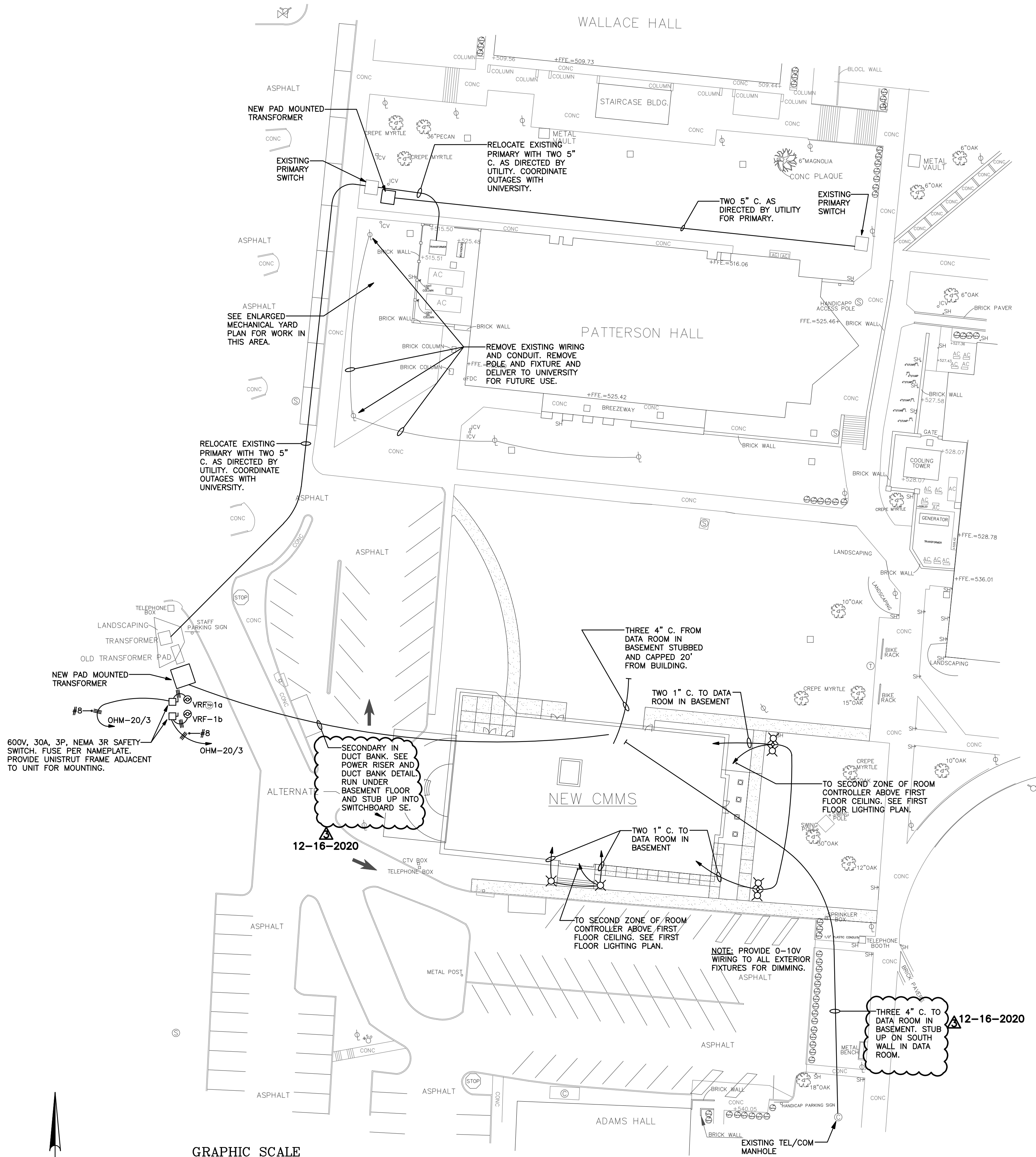
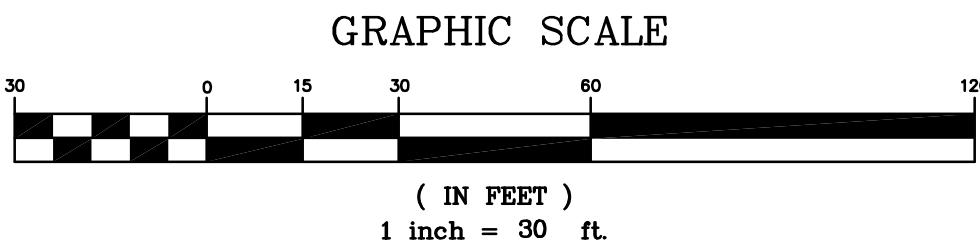
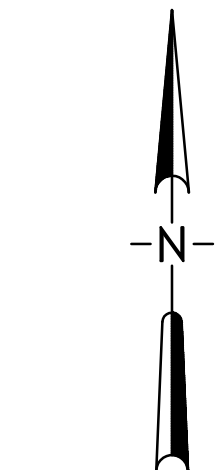
- NEW AREA LIGHTING STANDARD, TYPE A, SEE DETAIL.
- NEW AREA LIGHTING STANDARD, TYPE B, SEE DETAIL.
- BRANCH CIRCUIT WIRING IN UNDERGROUND PVC CONDUIT, #10 CONDUCTORS IN 1" CONDUIT 24" BELOW GRADE UNLESS NOTED.
- MOTOR OR EQUIPMENT JUNCTION BOX.
- SAFETY SWITCH, SIZE AND TYPE AS NOTED. FUSE PER NAMEPLATE.



SYMBOL: 
AREA LIGHTING STANDARD "A"
NO SCALE

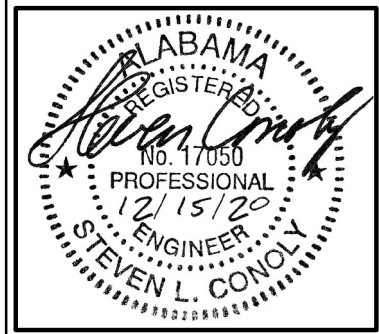


SYMBOL: 
AREA LIGHTING STANDARD "B"
NO SCALE



ELECTRICAL SITE PLAN
SCALE: 1" = 30'

MCE MILLS-CONOLY
ENGINEERING, P.C.
8218 OLD FEDERAL ROAD
MONTGOMERY, AL 36117
PHONE: (334) 270-0010
WEB: www.mills-conoly.com



LEGEND (CONTINUED)

	DIGITAL LIGHTING CONTROLS, WALL SWITCH.
\$LD	DIGITAL LIGHTING CONTROLS, WALL DIMMER SWITCH.
PS	DIGITAL LIGHTING CONTROLS, ONE ZONE POWER SUPPLY.
RC	DIGITAL LIGHTING CONTROLS, ONE ZONE DIMMING ROOM CONTROLLER.
2RC	DIGITAL LIGHTING CONTROLS, TWO ZONE DIMMING ROOM CONTROLLER.
RCT	DIGITAL LIGHTING CONTROLS, ONE ZONE ROOM CONTROLLER WITH TIME AND SCHEDULING CONTROL.
PLC	DIGITAL LIGHTING CONTROLS, PLUG LOAD CONTROLLER. CONNECT TO OCCUPANCY SENSOR/ROOM CONTROLLER PER INSTALLATION INSTRUCTIONS.
⊗	DIGITAL LIGHTING CONTROLS, OCCUPANCY SENSOR, 360°, DUAL TECHNOLOGY. FLUSH IN CEILING. IF NO CEILING OCCURS, SUSPEND TO LEVEL OF LIGHT FIXTURES.
▽	DIGITAL LIGHTING CONTROLS, OCCUPANCY SENSOR, WALL MOUNTED, DUAL TECHNOLOGY.
GRID	UL 924 EMERGENCY GENERATOR TRANSFER DEVICE WITH DIMMING CONTROL BYPASS. CONNECT 0-10V WIRING TO DEVICE AND FIXTURE PER INSTALLATION INSTRUCTIONS. HUBBELL #ALCR1277 OR APPROVED EQUAL.
FANN	FIRE ALARM SYSTEM, ANNUNCIATOR.
⬢	FIRE ALARM SYSTEM, CONTROL PANEL.
⊖	FIRE ALARM SYSTEM, MONITOR MODULE AND TAMPER SWITCH CONNECTION.
∞	FIRE ALARM SYSTEM, MONITOR MODULE AND FLOW VALVE CONNECTION.
⊗	FIRE ALARM SYSTEM, SPEAKER AND FLASHING LIGHT.
⊖	FIRE ALARM SYSTEM, FLASHING LIGHT ONLY.
■	FIRE ALARM SYSTEM, MANUAL STATION.
C	FIRE ALARM SYSTEM, CONTROL MODULE.
M	FIRE ALARM SYSTEM, MONITOR MODULE.
⬆	FIRE ALARM SYSTEM, HEAT DETECTOR, CEILING MOUNTED.
⊙	FIRE ALARM SYSTEM, CARBON MONOXIDE DETECTOR, CEILING/WALL MOUNTED.
⊙	FIRE ALARM SYSTEM, SMOKE DETECTOR, CEILING MOUNTED.
⊙---	FIRE ALARM SYSTEM, SMOKE DETECTOR, DUCT MOUNTED. COORDINATE LOCATION WITH MECHANICAL CONTRACTOR.
GFI	ADJACENT TO DEVICE INDICATES GFI TYPE.
WP	ADJACENT TO DEVICE INDICATES WEATHERPROOF TYPE.
FPN	ADJACENT TO DEVICE INDICATES FUSE PER NAMEPLATE.
NL	ADJACENT TO FIXTURE INDICATES FIXTURE TO BE CONSTANTLY ON (NIGHT LIGHT).

1. NO MULTI-WIRE BRANCH CIRCUITS SHALL BE RUN ON THIS PROJECT. PROVIDE A NEUTRAL CONDUCTOR FOR EACH PHASE CONDUCTOR. THE NEUTRAL CONDUCTOR SHALL HAVE A CONTINUOUS STRIPE OF SAME COLOR AS THE PHASE CONDUCTOR IN BRANCH CIRCUIT. GROUP BRANCH CIRCUIT CONDUCTORS WHEN SAME COLOR IS USED IN COMMON CONDUIT. NO MORE THAN THREE CIRCUITS SHALL BE RUN IN A CONDUIT.

2. PROVIDE GREEN INSULATED GROUND CONDUCTOR IN ALL RUNS IN ADDITION TO THOSE SHOWN. WHEN NO CONDUCTORS ARE SHOWN, THEN PROVIDE A PHASE, NEUTRAL AND GROUND CONDUCTOR.

3. PLEASE CONTACT THE ARCHITECT OR ENGINEER IF ANY CONCERNS OR QUESTIONS OCCUR. IT IS BETTER TO DISCUSS THE ITEMS, NO MATTER HOW TRIVIAL, THAN TO ASSUME SOMETHING THAT COULD POSSIBLY BE INCORRECT.

4. FROM EACH DATA WALL OUTLET AND TELEVISION/DATA WALL OUTLET RUN A 3/4" CONDUIT CONCEALED IN WALL AND STUB OUT AT NEAREST CABLE HOOK SYSTEM OR DATA ROOM.

5. REFER TO SPECIFICATIONS FOR LIGHTNING PROTECTION WORK TO BE INCLUDED IN THIS PROJECT.

6. CONTRACTOR SHALL VERIFY ALL ELECTRICAL EQUIPMENT (PANELBOARDS, SWITCHBOARDS, TRANSFORMERS, ATSS, SAFETY SWITCHES, ETC.) WILL PHYSICALLY FIT IN ROOMS OR SPACES SHOWN WITH OTHER EQUIPMENT BY ELECTRICAL AND OTHER TRADES PRIOR TO BID.

7. THIS PROJECT IS REQUIRED TO COMPLY WITH AN ENERGY CODE (ASHRAE 90.1 2013 EDITION). PROVIDE LIGHTING AND RECEPTACLE CONTROLS TO MEET THIS CODE. PROGRAM LIGHTING AND RECEPTACLES AS DIRECTED BY OWNER, BUT TO STILL MEET ENERGY CODE. PROVIDE ENERGY METERING IN PANELS TO MEET ENERGY CODE.

8. THE ELECTRICAL CONTRACTOR SHALL REFER TO THE MECHANICAL DRAWINGS AND PROVIDE THERMOSTAT BACK BOXES WHERE SHOWN. FROM EACH THERMOSTAT BOX RUN A 1/2" CONDUIT UP WALL AND STUB OUT AT AN ACCESSIBLE SPACE ABOVE THE CEILING. COORDINATE WORK AND BOX SIZES WITH MECHANICAL CONTRACTOR.

9. ALL BRANCH CIRCUIT RUNS SHALL BE OVERHEAD UNLESS SHOWN BELOW SLAB. PROVIDE JUNCTION BOXES ABOVE CEILING OR ON/SUSPENDED FROM STRUCTURE TO FEED LIGHT FIXTURES, RECEPTACLES AND OTHER DEVICES OR ITEMS.

10. AIC RATINGS SHOWN ON PANELBOARD/SWITCHBOARD SCHEDULES ARE ESTIMATED. ACTUAL RATING SHALL BE AS REQUIRED BY ARC FAULT STUDY CALCULATIONS.

11. ALL SURFACE MOUNTED PANELS SHALL HAVE DOOR-IN-DOOR CONSTRUCTION

12. UNDER ALTERNATE FLOOR PLANS, PROVIDE ALL WORK SHOWN ON BASE BID FLOOR PLAN IN ADDITION TO WORK SHOWN ON ALTERNATE PLAN. SHADED SYMBOLS ON ALTERNATE FLOOR PLANS INDICATE BASE BID ITEMS.

13. PRIOR TO ROUGH-IN OF A NEW OUTLET (RECEPTACLE, DATA, TV, ETC.), VERIFY EXACT LOCATION WITH THE ARCHITECT.

14. THE LOW VOLTAGE LIGHTING CONTROL WIRING SHALL BE COLOR, TYPE AND SIZE RECOMMENDED BY THE LIGHTING/DIMMING MANUFACTURER AND SHALL BE INSTALLED IN CONDUIT SEPARATE FROM THE POWER CONDUCTORS OR RUN EXPOSED IN A NEAT AND ORDERLY MANNER ATTACHED TO THE LIGHTING CIRCUIT CONDUITS WITHIN 12" FROM LUMINAIRE AND BOX AND AT LEAST 24" MAXIMUM INTERVALS THROUGHOUT RUN.

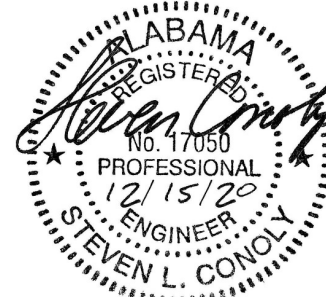
15. AFTER WORK HAS BEEN COMPLETED, CLEAN ALL LIGHT FIXTURES IN THE RENOVATED SPACES. NO DIRT, DEBRIS, FINGER PRINTS, SOAP RESIDUE, ETC. SHALL BE VISIBLE.

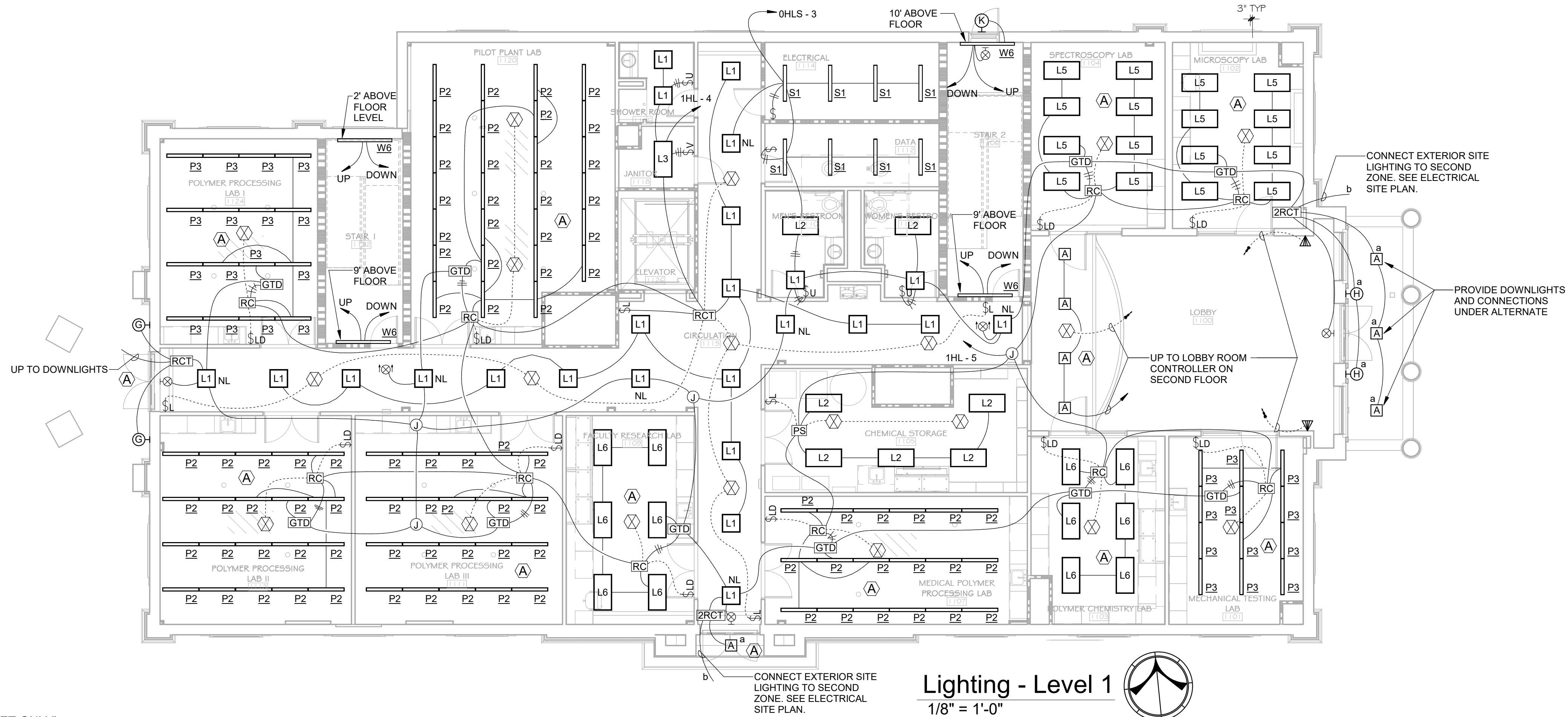
16. SUBMIT SUBSTITUTIONS TO LIGHT FIXTURES AND LIGHTING CONTROLS TO THE ENGINEER AT LEAST 10 DAYS PRIOR TO BID FOR REVIEW.

17. COORDINATE ANY POWER OUTAGES WITH UNIVERSITY.

18. THE SPACE ABOVE THE CEILINGS IS AN AIR PLENUM. ALL DEVICES, WIRING, ETC. SHALL BE PLENUM RATED IF LOCATED ABOVE THE CEILING.

Lighting Fixture Schedule						
Type	Description	Model	Lamp	Mounting	Remarks	
A	6" DIA. LED OPEN DOWNLIGHT WITH SEMI-SPECULAR REFLECTOR, 2000 LUMEN OUTPUT, MEDIUM DISTRIBUTION, WET LOCATION LISTED UNDER COVER, 0-10V DIMMING AND 120-277V INTERNAL DRIVER.	PRESCOLITE LTR-6D-H-HL-30L-DM1-LTR-6RD-T-ML-40K-8-MD-SS APPROVED EQUALS: HE WILLIAMS 6DR	23W LED	RECESSED IN CEILING		
B	6" DIA. LED OPEN DOWNLIGHT WITH SEMI-SPECULAR REFLECTOR, 3500 LUMEN OUTPUT, MEDIUM DISTRIBUTION, 90+ CRI, 0-10V DIMMING AND 120-277V INTERNAL DRIVER.	PRESCOLITE LTR-6RD-H-HL-35L-DM1-LTR-6RD-T-HL-40K-9-MD-SS APPROVED EQUALS: HE WILLIAMS 6DR	43W LED	RECESSED IN CEILING		
G	42" TALL LED ACORN LUMINAIRE WITH CAST ALUMINUM CONSTRUCTION, CLEAR DIFFUSED ACRYLIC LENS, BLACK FINISH, TYPE 3 DISTRIBUTION, 0-10V DIMMING AND MULTIVOLT INTERNAL DRIVER.	AAL FGL-RB-SAL-Y3-36LED-4K-600-BLK-TA3-WMA3-MOD LESS FINIAL APPROVED EQUALS: HADCO RL34	73W LED	WALL	MOUNT BOTTOM OF FIXTURE AT 6'-9" A.F.F. FIXTURE TO MATCH SITE POST TOPS.	
H	36" TALL LED ACORN LUMINAIRE WITH CAST ALUMINUM CONSTRUCTION, CLEAR DIFFUSED ACRYLIC LENS, BLACK FINISH, TYPE 3 DISTRIBUTION, 0-10V DIMMING AND MULTIVOLT INTERNAL DRIVER.	AAL FGS-RB-SAL-Y3-36LED-4K-450-BLK-TA3-WMA3-MOD LESS FINIAL APPROVED EQUALS: HADCO RL34	53W LED	WALL	MOUNT BOTTOM OF FIXTURE AT 6'-9" A.F.F. FIXTURE TO MATCH SITE POST TOPS.	
K	17"x8" LED WALL BRACKET WITH ALUMINUM HOUSING, FLAT RECTANGULAR DESIGN, 3000 LUMEN OUTPUT, FORWARD THROW, MEDIUM DISTRIBUTION, INTEGRAL MOTION/PHOTO SENSOR AND 120-277V INTERNAL DRIVER.	LITHONIA WSTLED-P2-40K-VF-MVOLT-PIR-" APPROVED EQUALS: VISIONAIRE PGAS-2	16W LED	WALL	*FINISH BY ARCHITECT.	
L1	2'X2' LED FLAT PANEL WITH EXTRUDED ALUMINUM FRAME, ACRYLIC LENS, 3000 LUMEN OUTPUT, 0-10V DIMMING AND 120-277V INTEGRAL DRIVER.	COLUMBIA SRP22-40-ML-G-ED1-U APPROVED EQUALS: DAY-BRITE 2FPZ	30W LED	RECESSED IN CEILING		
L2	2'X4' LED FLAT PANEL WITH EXTRUDED ALUMINUM FRAME, ACRYLIC LENS, 3500 LUMEN OUTPUT, 0-10V DIMMING AND 120-277V INTEGRAL DRIVER.	COLUMBIA SRP24-40-MW-G-ED1-U APPROVED EQUALS: DAY-BRITE 2FPZ	33W LED	RECESSED IN CEILING		
L3	2'X4' LED FLAT PANEL WITH EXTRUDED ALUMINUM FRAME, ACRYLIC LENS, 4100 LUMEN OUTPUT, 0-10V DIMMING AND 120-277V INTEGRAL DRIVER.	COLUMBIA SRP24-40-LW-G-ED1-U APPROVED EQUALS: DAY-BRITE 2FPZ	39W LED	RECESSED IN CEILING		
L4	2'X4' LED FLAT PANEL WITH EXTRUDED ALUMINUM FRAME, ACRYLIC LENS, 4500 LUMEN OUTPUT, 0-10V DIMMING AND 120-277V INTEGRAL DRIVER.	COLUMBIA SRP24-40-ML-G-ED1-U APPROVED EQUALS: DAY-BRITE 2FPZ	45W LED	RECESSED IN CEILING		
L5	2'X4' LED FLAT PANEL WITH EXTRUDED ALUMINUM FRAME, ACRYLIC LENS, 5100 LUMEN OUTPUT, 0-10V DIMMING AND 120-277V INTEGRAL DRIVER.	COLUMBIA SRP24-40-HL-G-ED1-U APPROVED EQUALS: DAY-BRITE 2FPZ	54W LED	RECESSED IN CEILING		
L6	2'X4' LED FLAT PANEL WITH EXTRUDED ALUMINUM FRAME, ACRYLIC LENS, 6600 LUMEN OUTPUT, 0-10V DIMMING AND 120-277V INTEGRAL DRIVER.	COLUMBIA SRP24-40-VL-G-ED1-U APPROVED EQUALS: DAY-BRITE 2FPZ	69W LED	RECESSED IN CEILING		
P	LED WALL BRACKET (ENCLOSED AND GASKETED) WITH ALUMINUM GUARD AND 120 VOLT DRIVER.	HUBBELL V8LU15-WVW1-VCG-1 APPROVED EQUALS: STONCO VWXL	20W LED	WALL	*MOUNT IN ELEVATOR PIT AS DIRECTED BY ELEVATOR INSTALLER.	
P1	4' x 4' SQUARE LED LINEAR WITH EXTRUDED ALUMINUM HOUSING, DIE CAST ALUMINUM END CAPS, FLUSH SOFT DIFFUSED ACRYLIC LENS, AIRCRAFT CABLE SUSPENSION, 600 LUMENS/FOOT, 0-10V DIMMING AND 120-277V INTERNAL DRIVER.	LITECONTROL 4L-P-D-4(+)-SOF-C1-40K-D060-D01-1C-UNV-FA APPROVED EQUALS: FINELITE HP4	22W LED	SUSPENDED	*FINISH BY ARCHITECT. SUSPEND FIXTURE UNDER OTHER TRADES TO HEIGHT BY ARCHITECT. PROVIDE CONTINUOUS RUNS WHERE SHOWN WITH 8-12" SECTIONS. FACTORY ASSEMBLED.	
P2	4' x 4' SQUARE LED LINEAR WITH EXTRUDED ALUMINUM HOUSING, DIE CAST ALUMINUM END CAPS, FLUSH SOFT DIFFUSED ACRYLIC LENS, AIRCRAFT CABLE SUSPENSION, 900 LUMENS/FOOT, 0-10V DIMMING AND 120-277V INTERNAL DRIVER.	LITECONTROL 4L-P-D-4(+)-SOF-C1-40K-D090-D01-1C-UNV-FA APPROVED EQUALS: FINELITE HP4	33W LED	SUSPENDED	*FINISH BY ARCHITECT. SUSPEND FIXTURE UNDER OTHER TRADES TO HEIGHT BY ARCHITECT. PROVIDE CONTINUOUS RUNS WHERE SHOWN WITH 8-12" SECTIONS. FACTORY ASSEMBLED.	
P3	4' x 4' SQUARE LED LINEAR WITH EXTRUDED ALUMINUM HOUSING, DIE CAST ALUMINUM END CAPS, FLUSH SOFT DIFFUSED ACRYLIC LENS, AIRCRAFT CABLE SUSPENSION, 1000 LUMENS/FOOT, 0-10V DIMMING AND 120-277V INTERNAL DRIVER.	LITECONTROL 4L-P-D-4(+)-SOF-C1-40K-D100-D01-1C-UNV-FA APPROVED EQUALS: FINELITE HP4	36W LED	SUSPENDED	*FINISH BY ARCHITECT. SUSPEND FIXTURE UNDER OTHER TRADES TO HEIGHT BY ARCHITECT. PROVIDE CONTINUOUS RUNS WHERE SHOWN WITH 8-12" SECTIONS. FACTORY ASSEMBLED.	
P4	4' x 4' SQUARE LED LINEAR WITH EXTRUDED ALUMINUM HOUSING, DIE CAST ALUMINUM END CAPS, 70/30 DIRECT/INDIRECT DISTRIBUTION, FLUSH SOFT DIFFUSED ACRYLIC LENS, AIRCRAFT CABLE SUSPENSION, 900 LUMENS/FOOT, 0-10V DIMMING UP AND DOWNLIGHT SEPARATELY AND 120-277V INTERNAL DRIVER.	LITECONTROL 4L-P-ID-STD-4(+)-SOF-C1-40K-I035-D060-D01-2C-UNV-FA	32W LED	SUSPENDED	*FINISH BY ARCHITECT. SUSPEND FIXTURE UNDER OTHER TRADES TO HEIGHT BY ARCHITECT. PROVIDE CONTINUOUS RUNS WHERE SHOWN WITH 8-12" SECTIONS. FACTORY ASSEMBLED.	
S1	4' LED STRIP WITH ROUND DIFFUSED LENS, 3600 LUMEN OUTPUT, WIDE LIGHT DISTRIBUTION, 0-10V DIMMABLE AND 120-277V INTERNAL DRIVER.	COLUMBIA MPS-4-40-MW-C-W-ED-U-PAF APPROVED EQUALS: HE WILLIAMS 75	30W LED	SUSPENDED/SU RFACE	SUSPEND BELOW AND COORDINATE LOCATION WITH OTHER TRADES.	
S2	4' LED STRIP WITH ROUND DIFFUSED LENS, 4600 LUMEN OUTPUT, WIDE LIGHT DISTRIBUTION, 0-10V DIMMABLE AND 120-277V INTERNAL DRIVER.	COLUMBIA MPS-4-40-ML-C-W-ED-U-PAF APPROVED EQUALS: HE WILLIAMS 75	40W LED	SUSPENDED/SU RFACE	SUSPEND BELOW AND COORDINATE LOCATION WITH OTHER TRADES.	
W4	4' x 4' LED WALL MOUNT FIXTURE WITH ROUND/CURVED LENS, DIRECT/INDERECT LIGHT DISTRIBUTION, 800 LUMENS/FT, INTERNAL BI-LEVEL OCCUPANCY SENSOR AND 120-277V INTERNAL DRIVER.	AXIS PRWLED-800-80-40-S-4-W-UNV-BI'-1-OS APPROVED EQUALS: PRIMUS LN3	29W LED	WALL	*PROVIDE OCCUPANCY SENSOR AND DRIVER SO THAT FIXTURE STAYS ON AT 30%, AND WHEN OCCUPANCY IS DETECTED BRIGHTENS TO 100%. PROVIDE CONSTANT HOT CIRCUIT TO FIXTURE.	
W6	6' x 4' LED WALL MOUNT FIXTURE WITH ROUND/CURVED LENS, DIRECT/INDERECT LIGHT DISTRIBUTION, 800 LUMENS/FT, INTERNAL BI-LEVEL OCCUPANCY SENSOR AND 120-277V INTERNAL DRIVER.	AXIS PRWLED-800-80-40-S-6-W-UNV-BI'-1-OS APPROVED EQUALS: PRIMUS LN3	43W LED	WALL	*PROVIDE OCCUPANCY SENSOR AND DRIVER SO THAT FIXTURE STAYS ON AT 30%, AND WHEN OCCUPANCY IS DETECTED BRIGHTENS TO 100%. PROVIDE CONSTANT HOT CIRCUIT TO FIXTURE.	
EXIT SNGL	SINGLE FACE EDGE LIT EXIT LIGHT WITH RED LETTERS ON MIRRORRED BACKGROUND, BRUSHED ALUMINUM HOUSING TRIM, LED LAMPS, 120/277 VOLT OPERATION AND WITH OR WITHOUT ARROWS (AS SHOWN).	DUAL-LITE LES-CNV-S-R-"-N-A-M APPROVED EQUALS: BEGHELLI BRU	N/A	CEILING/WALL		
EXIT DBL	DOUBLE FACE EDGE LIT EXIT LIGHT WITH RED LETTERS ON MIRRORRED BACKGROUND, BRUSHED ALUMINUM HOUSING TRIM, LED LAMPS, 120/277 VOLT OPERATION AND WITH OR WITHOUT ARROWS (AS SHOWN).	DUAL-LITE LES-C-D-R-"-N-A-M APPROVED EQUALS: BEGHELLI BRU	N/A	CEILING		





REFERENCED NOTES (THIS SHEET ONLY):

- (A) PROVIDE 0-10V DIMMING CONTROL WIRING TO ALL FIXTURES IN THIS AREA. THE 0-10V AND LOW VOLTAGE LIGHTING CONTROL WIRING SHALL BE COLOR, TYPE AND SIZE RECOMMENDED BY THE LIGHTING/DIMMING MANUFACTURER AND SHALL BE INSTALLED IN CONDUIT SEPARATE FROM THE POWER CONDUCTORS OR RUN EXPOSED IN A NEAT AND ORDERLY MANNER ATTACHED TO THE LIGHTING CIRCUIT CONDUITS WITHIN 12" FROM LUMINAIRE AND BOX AND AT LEAST 24" MAXIMUM INTERVALS THROUGHOUT RUN.

