

Date: 29 September 2022
To: All Plan Holders
Subject: ADDENDUM NO. 2
Project: TROY UNIVERSITY HWY 231 ENTRY SIGN
Job #: SSL# 22016
TROY BID# 22-038
From: Cody Smith

The Plans and Specifications dated September 2022 of the subject project, and any subsequent addenda are amended as follows: (Where there are conflicts between the plans and specifications and the addendum, this addendum shall govern)

Item 1: Refer to the Specification Section 05 5000 Metal Fabrications:

Paragraph 2.01., add the following:

J. Gates, and all associated structure and hardware, shall withstand winds up to 120 miles per hour minimum per all area code requirements.

Paragraph 2.03.F: replace with following:

Hinges for Substation Screen Wall- Provide heavy duty Ball Bearing hinges with integral grease fittings for each Gate. Hinge quantity as required (3 hinges minimum per gate leaf) for a Ten year warranty.

Item 2: Refer to Drawing A1.1 and replace with attached. Added Drop Rod to Gate Elevation.

Item 3: Refer to Drawing A4.1 and replace with attached. Updated Troy University lettering and arrow.

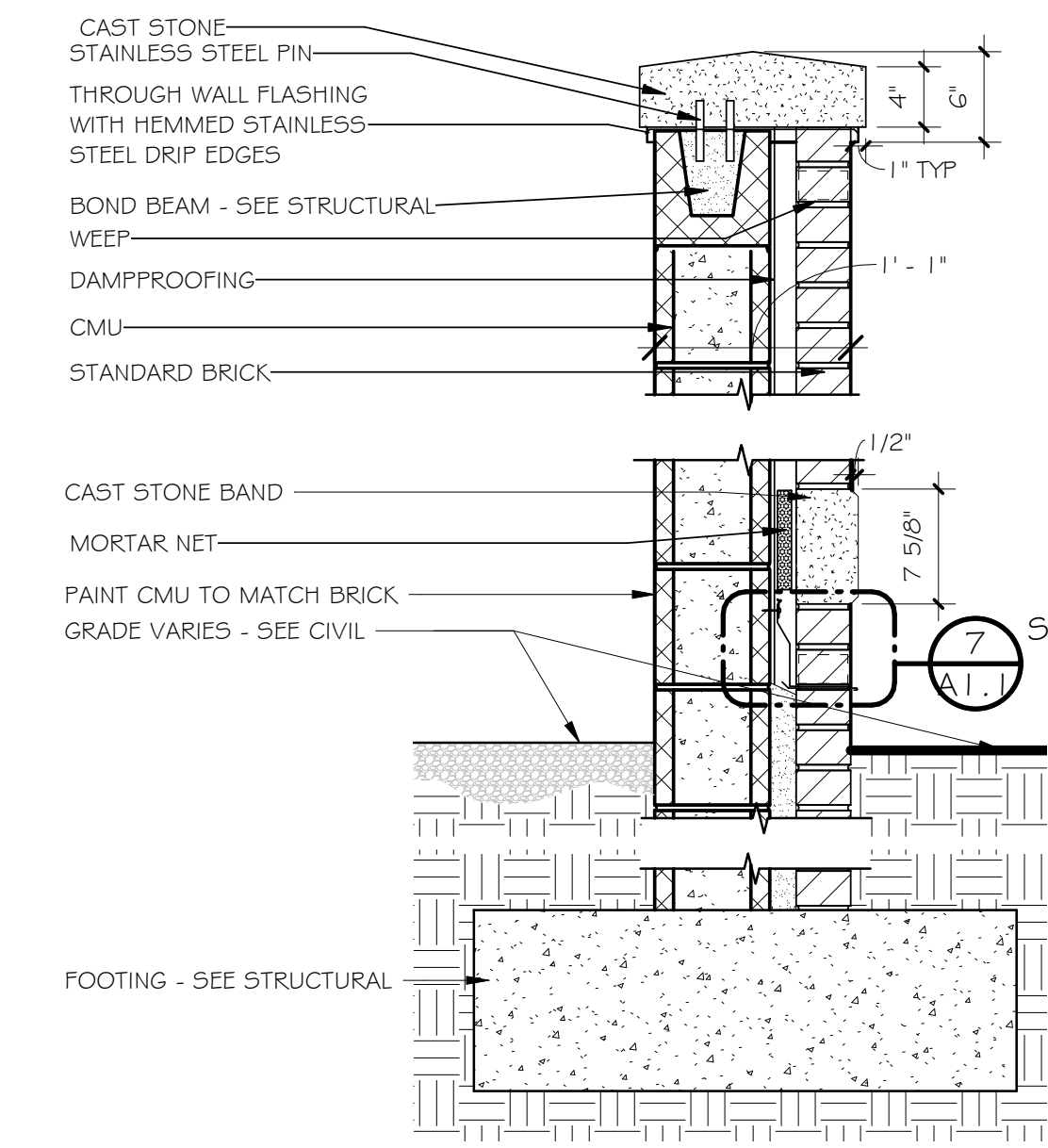
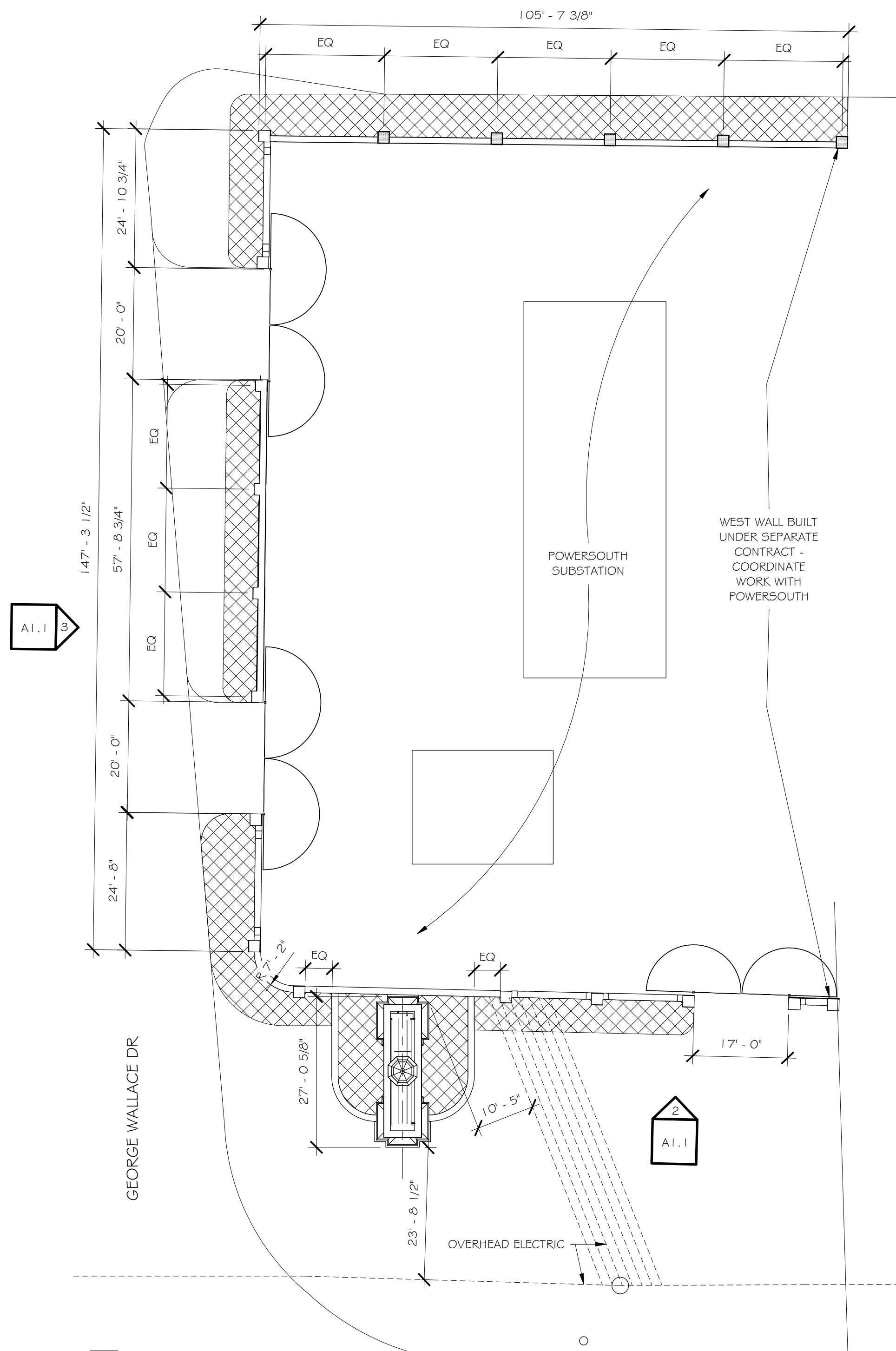
Item 4: Refer to Drawing A5.2 and replace with attached. Clarified Wayfinding Sign Banner.

Item 5: Refer to Specification Section 31 6615 Helical Foundation Piles, Paragraph 2.11. Cantsink will be considered an approved equal subject to requirements of the drawings and specifications

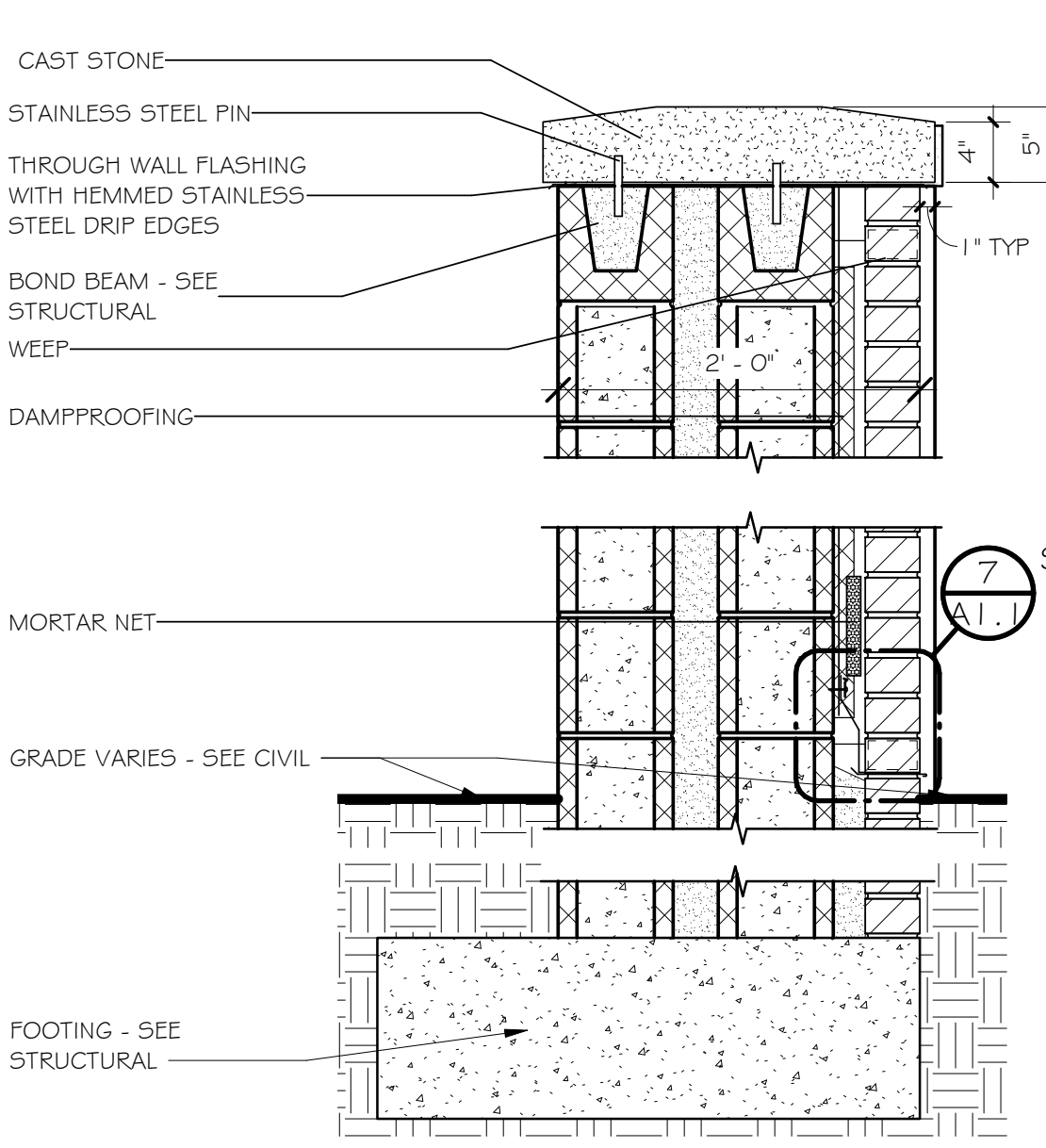
Item 6: Refer to Structural Drawing S3.1 and replace with attached. Added Gate Column Detail 8.

Item 7: Refer to Electrical Drawing E1.0 and replace with attached. Removed Screenwall floodlights.

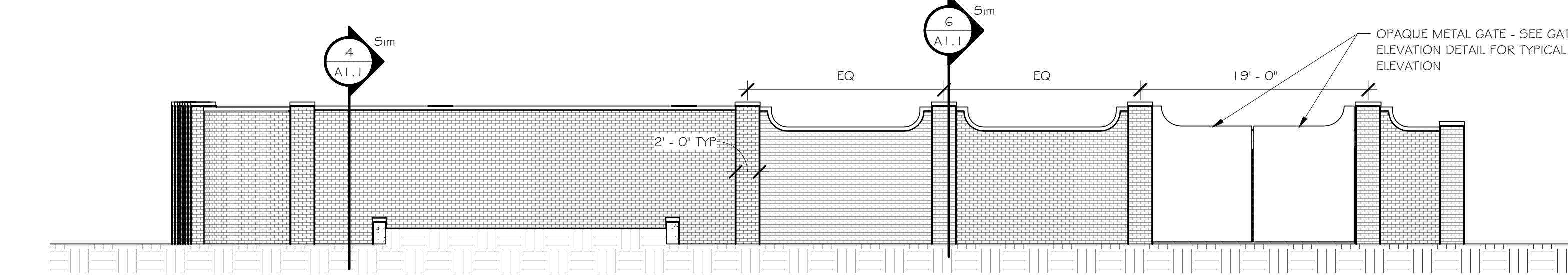
End of Addendum No. 2



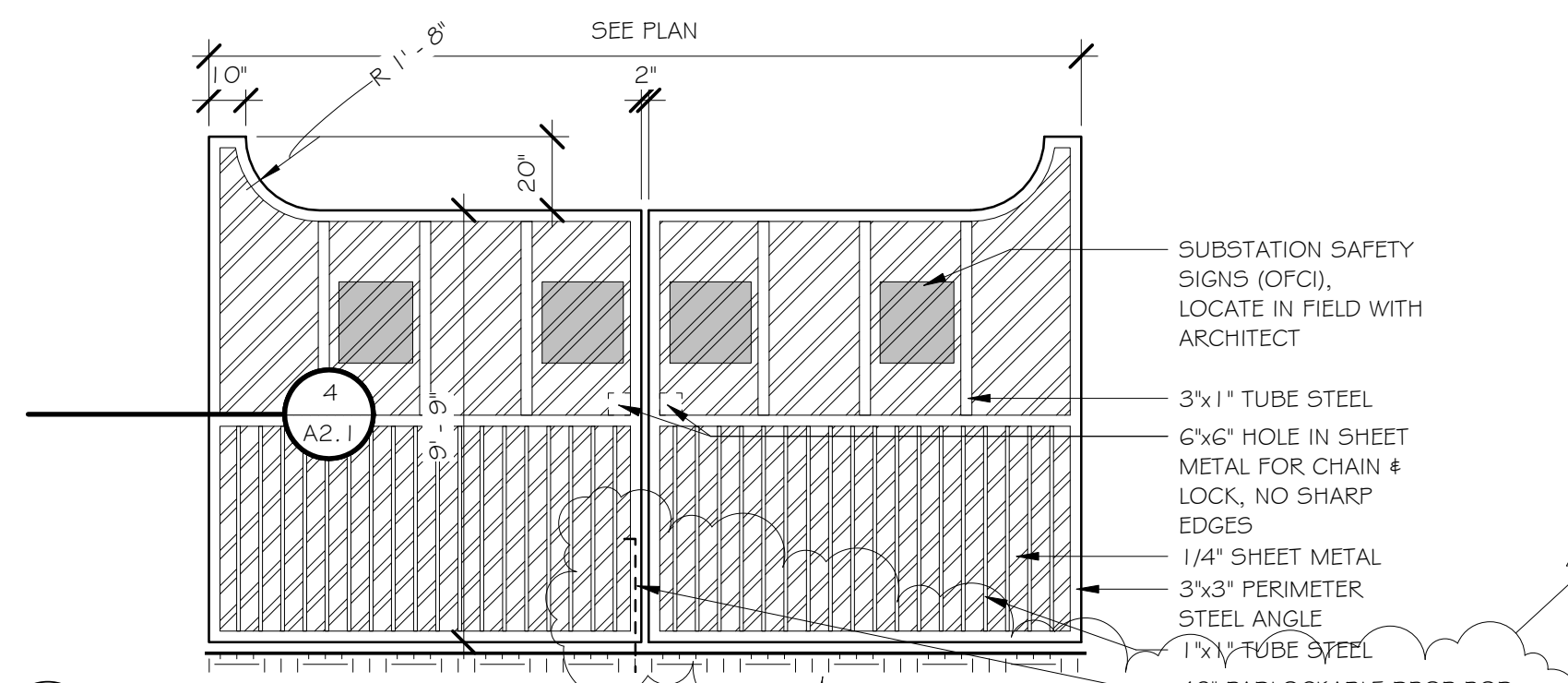
4 SCREEN WALL SECTION
1" = 1'-0"



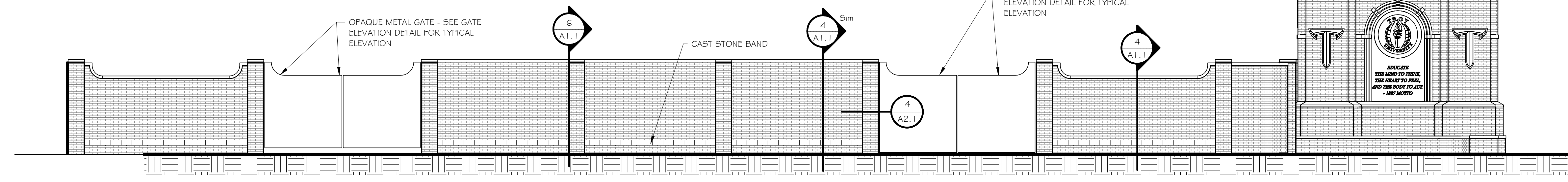
7 TYPICAL FLASHING AT BRICK VENEER DETAIL
6" = 1'-0"



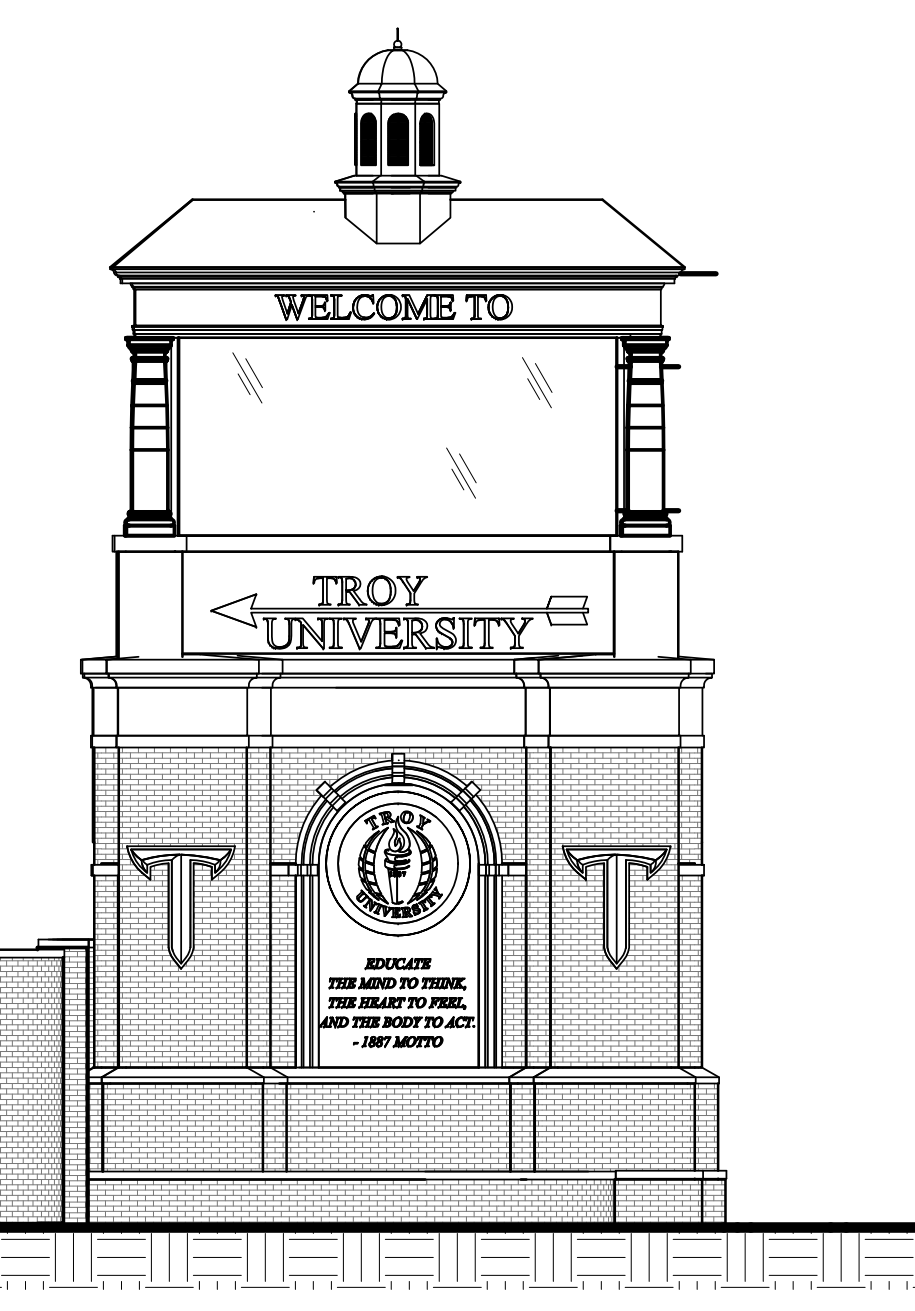
2 SCREEN WALL SOUTH ELEVATION
1/8" = 1'-0"



5 SCREEN WALL GATE ELEVATION
1/4" = 1'-0"



3 SCREEN WALL WEST ELEVATION
1/8" = 1'-0"



Rev.	Description	Date
2	ADDENDA 2	09.26.22

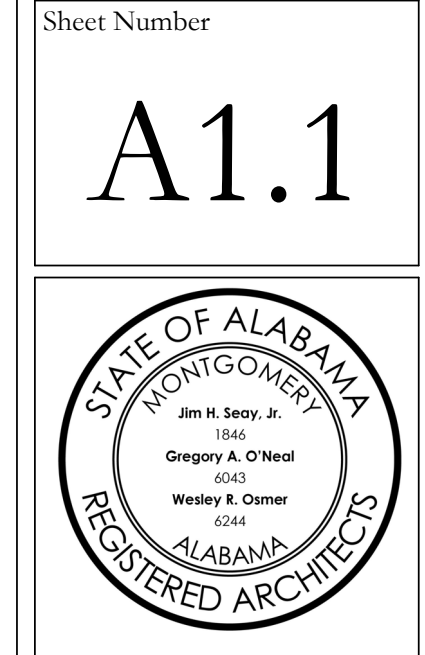
Job Number	22016
Date	SEPTEMBER 2022
Drawn By	CS
Checked By	FL

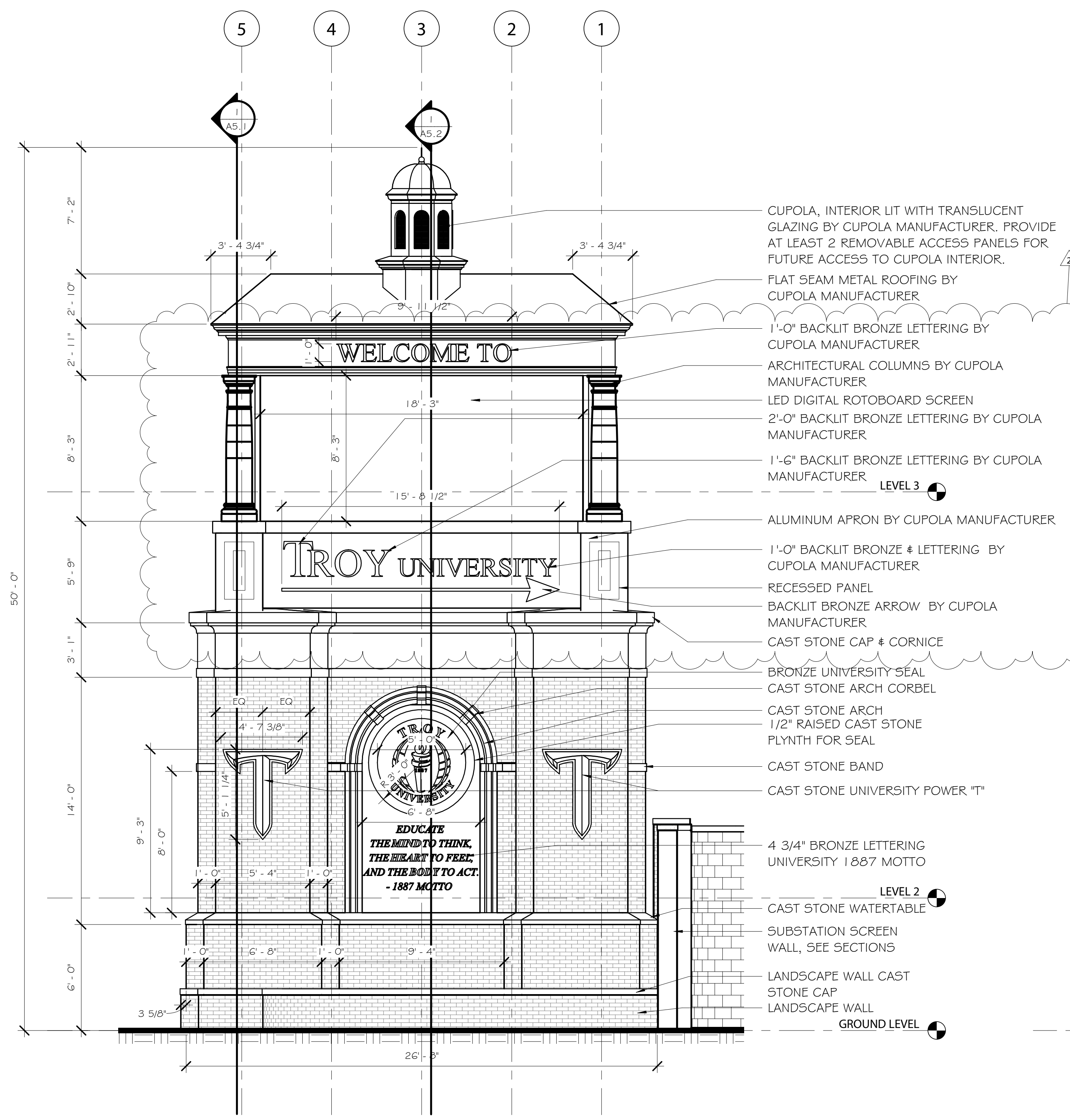
Project Title

TROY UNIVERSITY
HWY 231 SIGN
TROY, AL

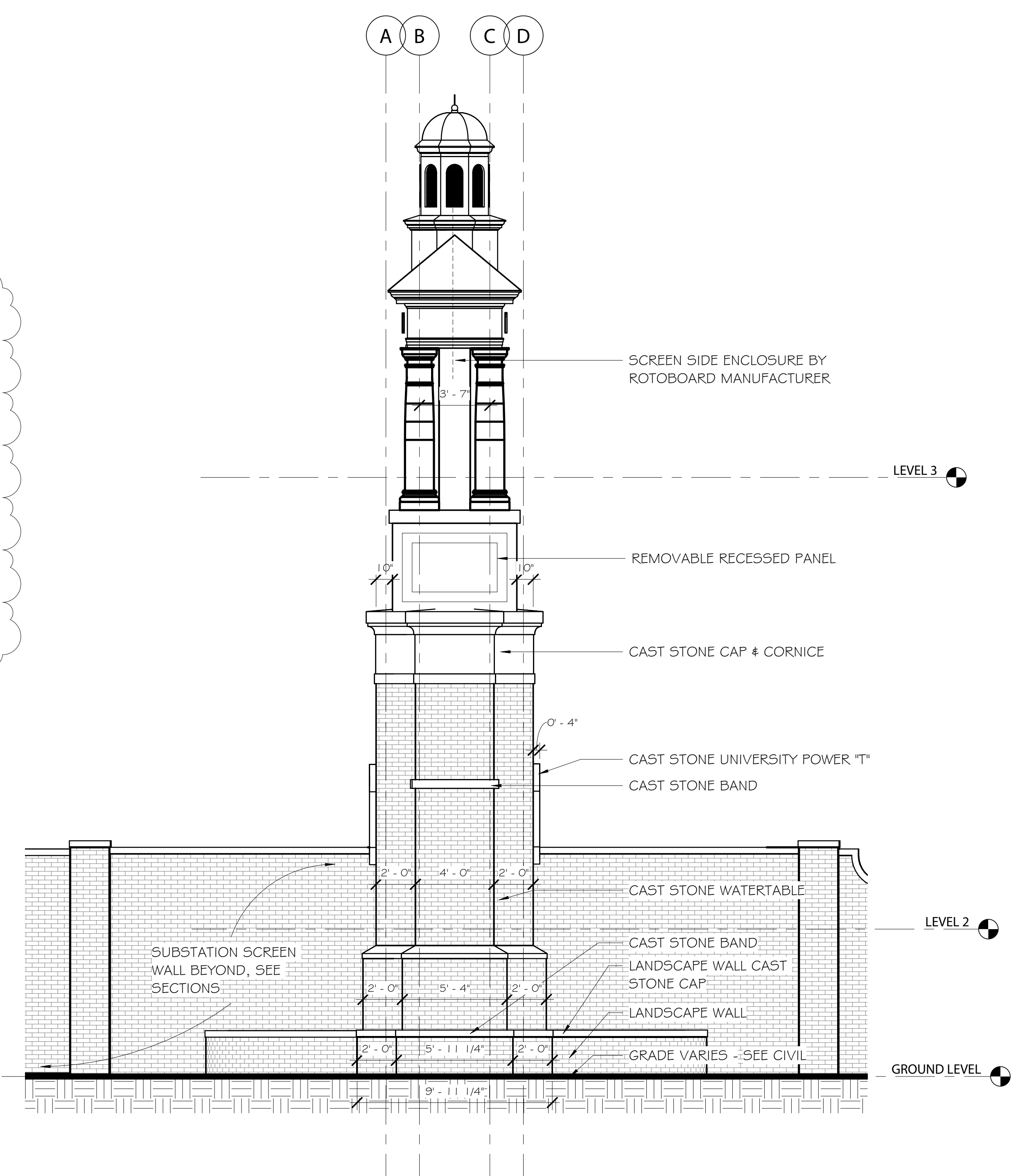
Sheet Title
SUBSTATION
SCREENWALL

Sheet Number
A1.1

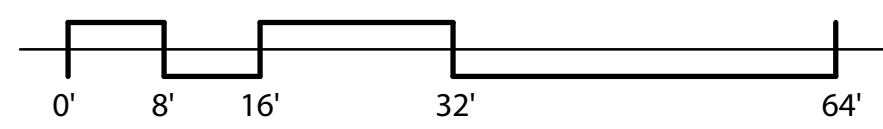




1 EAST ELEVATION (WEST SIM)
1/4" = 1'-0"



2 SOUTH ELEVATION (NORTH SIM)
1/4" = 1'-0"



Rev.	Description	Date
2	ADDENDA 2	09.26.22

Job Number	22016
Date	SEPTEMBER 2022
Drawn By	CS
Checked By	FL

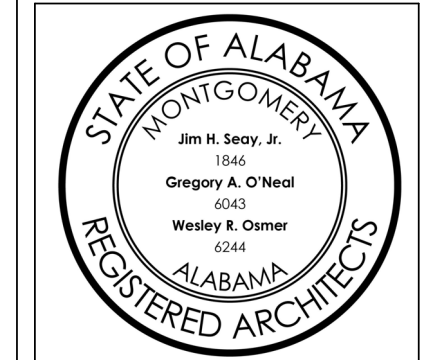
Project Title

**TROY UNIVERSITY
HWY 231 SIGN**

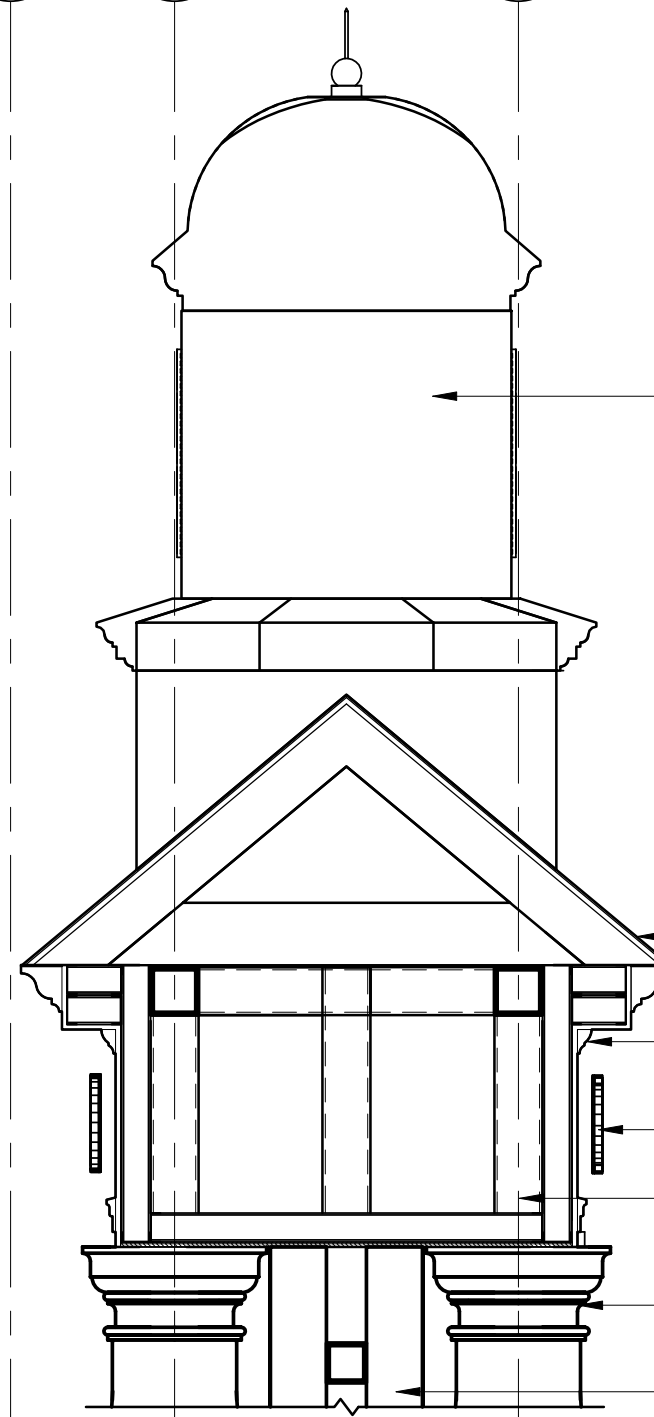
TROY, AL

Sheet Title
SIGN ELEVATION

Sheet Number
A4.1



D C B A



CUPOLA, INTERIOR LIT WITH TRANSLUCENT GLAZING BY CUPOLA MANUFACTURER

STANDING SEAM METAL ROOF BY CUPOLA MANUFACTURER

ALUMINUM CORNICE BY CUPOLA MANUFACTURER

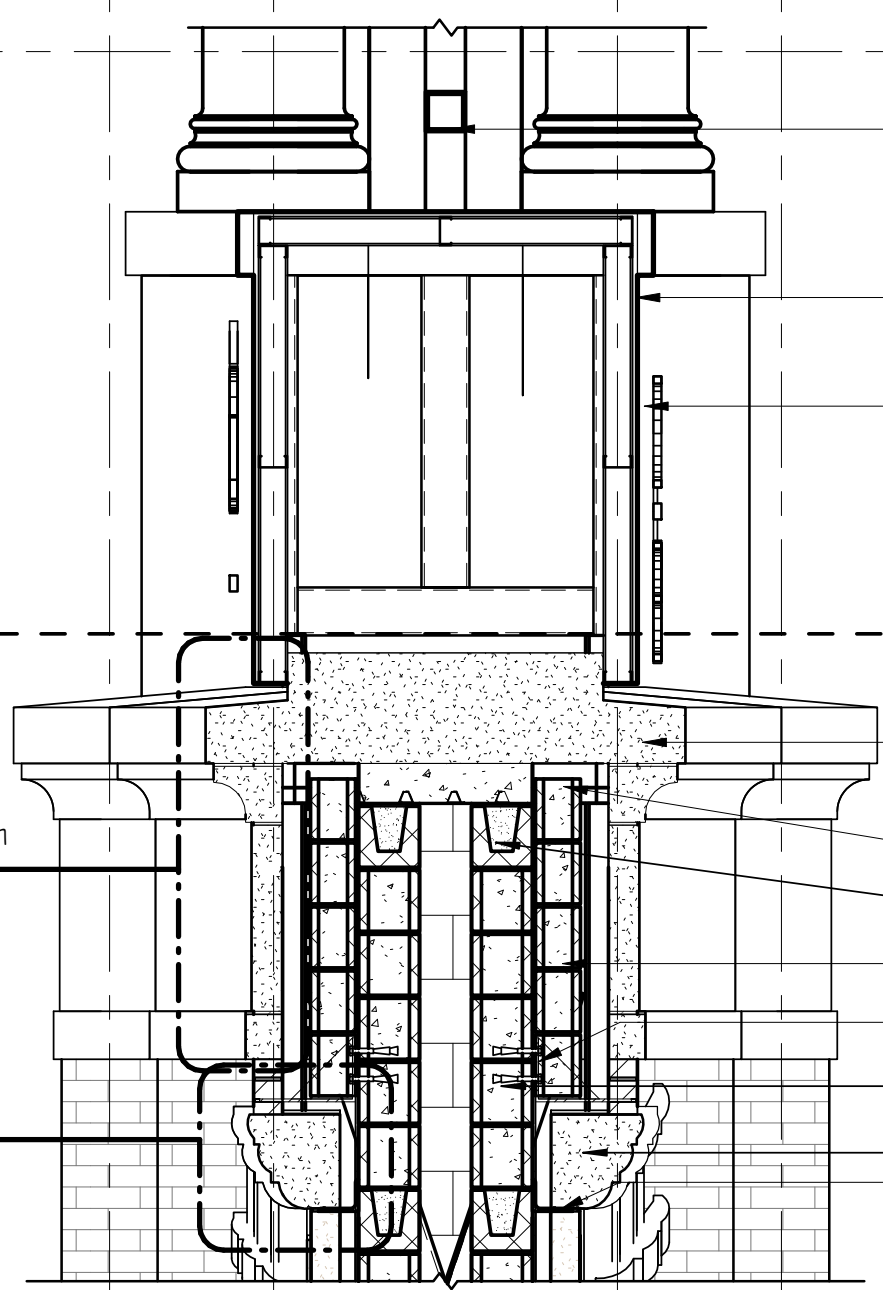
BACK LIT LETTERING BY CUPOLA MANUFACTURER

STRUCTURE BY CUPOLA MANUFACTURER

COLUMN WRAP BY CUPOLA MANUFACTURER

LED VIDEO DISPLAY BOARD

LEVEL 3



STRUCTURE BY CUPOLA MANUFACTURER

ALUMINUM PEDESTAL WRAP BY CUPOLA MANUFACTURER

BACK LIT LETTERING BY CUPOLA MANUFACTURER

CAST STONE CAP

CONCRETE DECK

BOND BEAM - SEE STRUCTURAL

"6" CMU

ANGLE - SEE STRUCTURAL

"8" CMU

CAST STONE

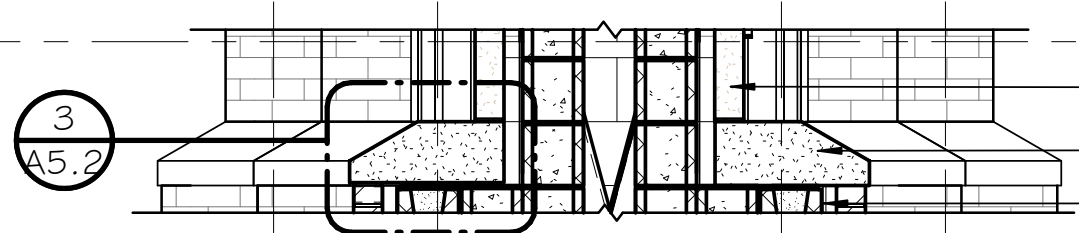
ANGLE - SEE STRUCTURAL

ALL STRUCTURE AND CONNECTIONS ABOVE DASHED LINE BY CUPOLA MANUFACTURER. CUPOLA MANUFACTURER SHALL COORDINATE REQUIRED STRUCTURE FOR VIDEO DISPLAY SCREENS AND COORDINATE WITH ELECTRICAL.

2 A5.1 Sim

2 A5.2

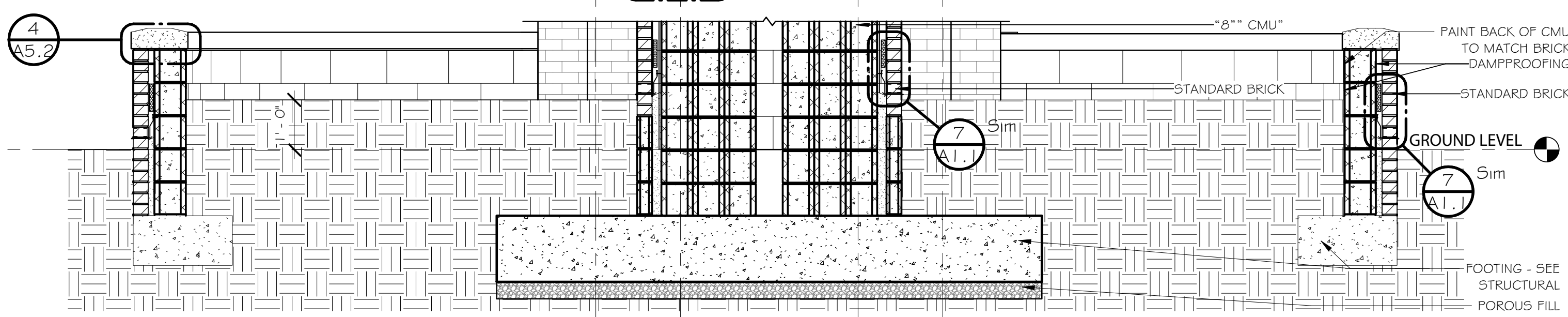
LEVEL 2



CAST STONE

CAST STONE

BOND BEAM - SEE STRUCTURAL



"8" CMU

PAIN'T BACK OF CMU TO MATCH BRICK

DAMP PROOFING

STANDARD BRICK

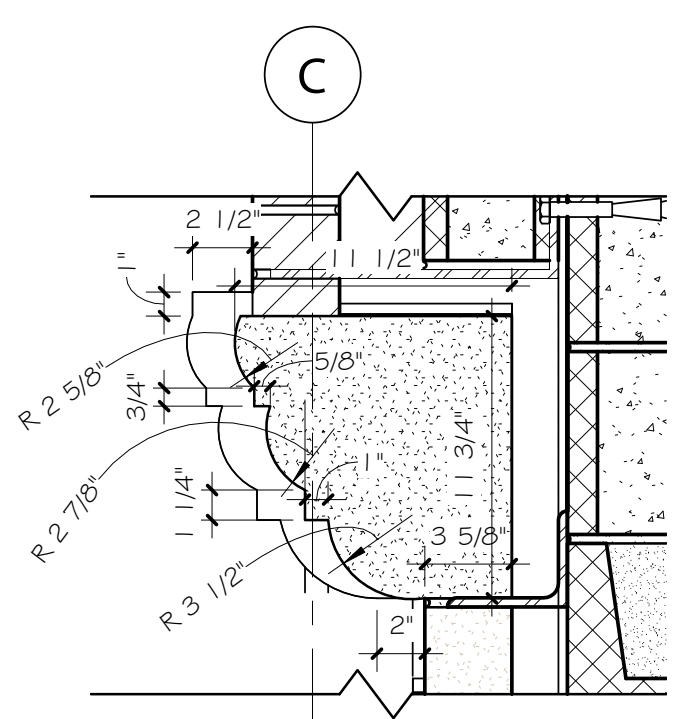
STANDARD BRICK

GROUND LEVEL

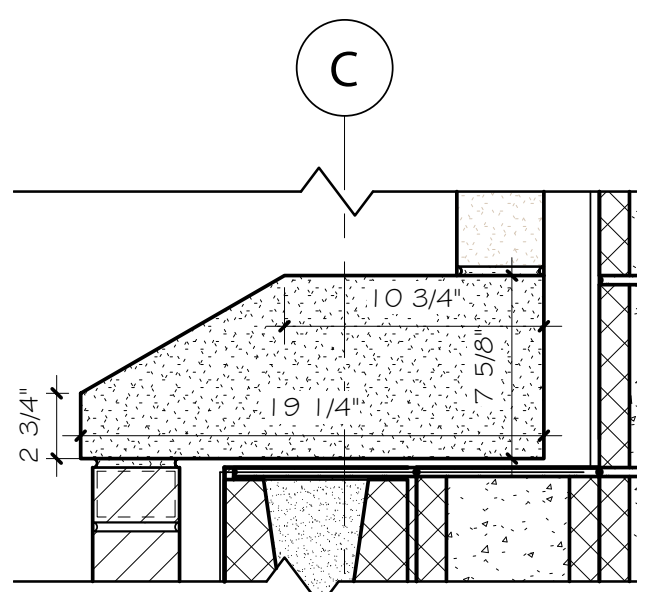
FOOTING - SEE STRUCTURAL

POROUS FILL

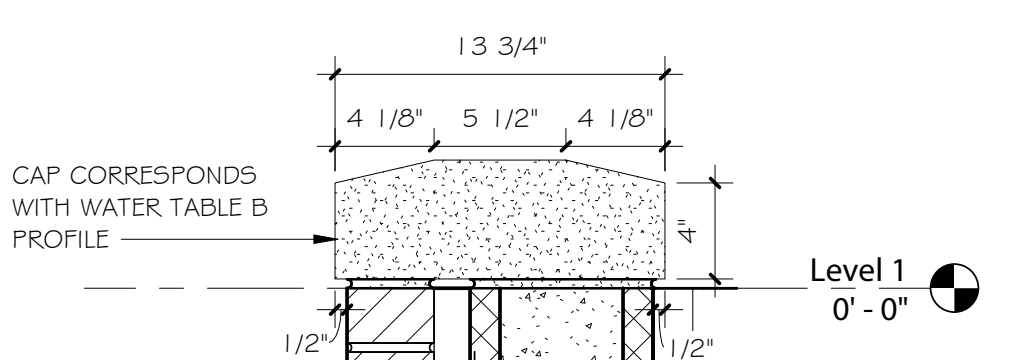
1 A5.2 Section 2 1/2" = 1'-0"



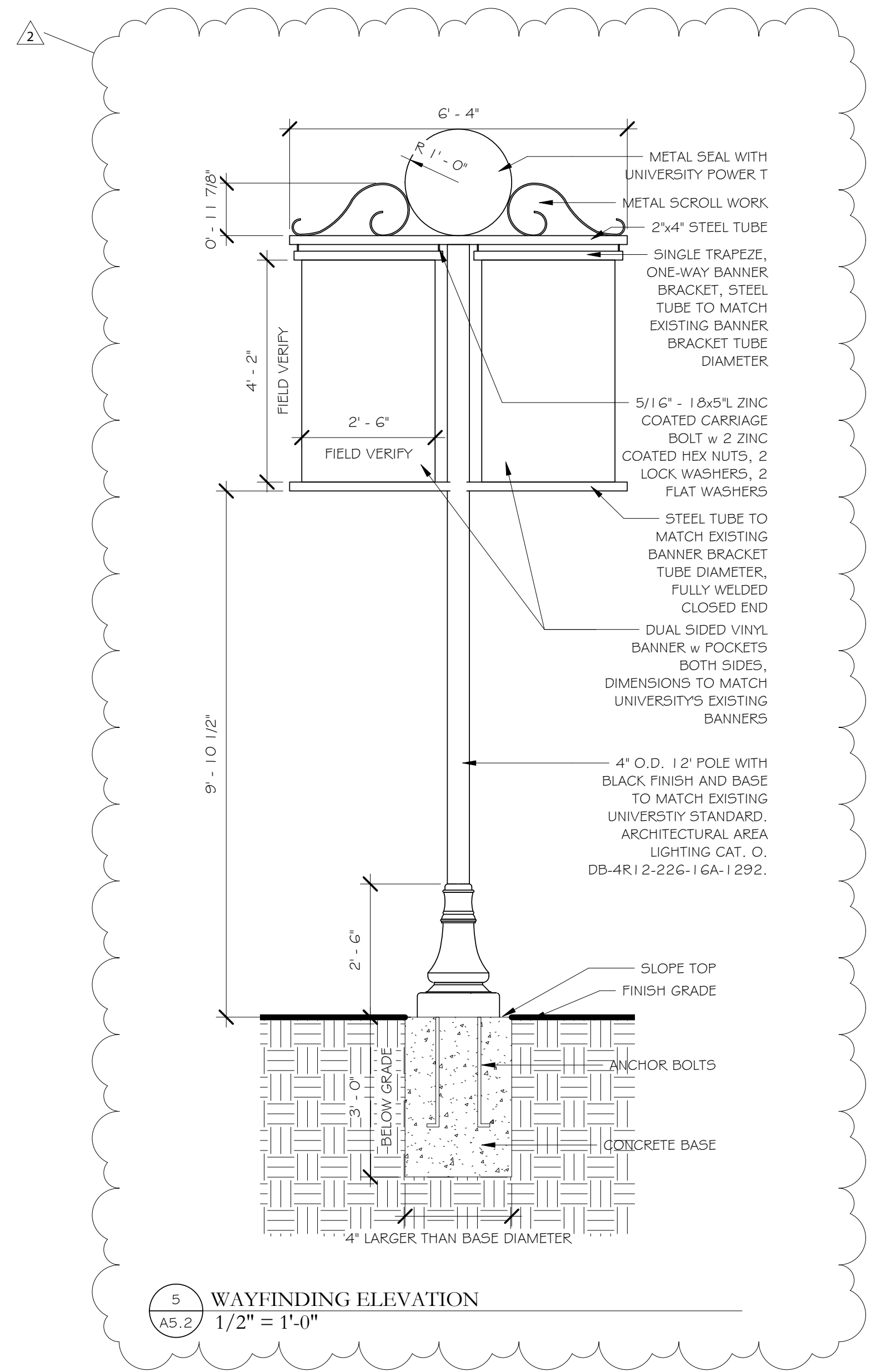
2 A5.2 CAST STONE ARCH PROFILE 1 1/2" = 1'-0"



3 A5.2 CAST STONE WATER TABLE A2 PROFILE 1 1/2" = 1'-0"



4 A5.2 LANDSCAPE WALL CAST STONE CAP PROFILE 1 1/2" = 1'-0"



5 A5.2 WAYFINDING ELEVATION 1/2" = 1'-0"



*RENDERING NOT FOR CONSTRUCTION USE.

Rev.	Description	Date
2	ADDENDA 2	09.26.22

Job Number 22016
Date SEPTEMBER 2022
Drawn By CS
Checked By FL

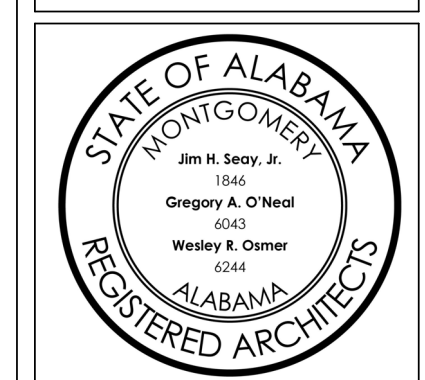
Project Title

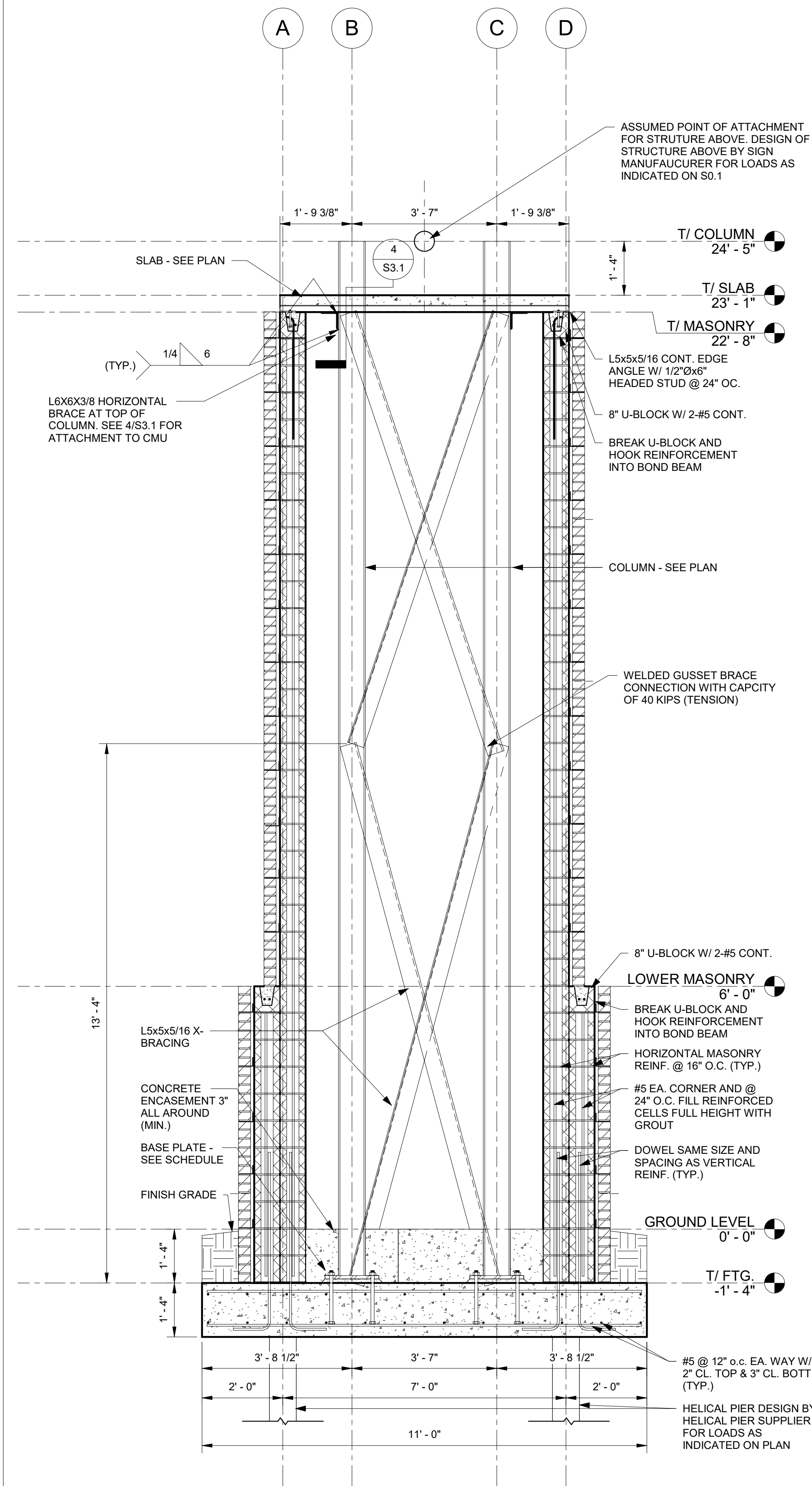
TROY UNIVERSITY
HWY 231 SIGN
TROY, AL

Sheet Title
SIGN SECTION AND DETAILS

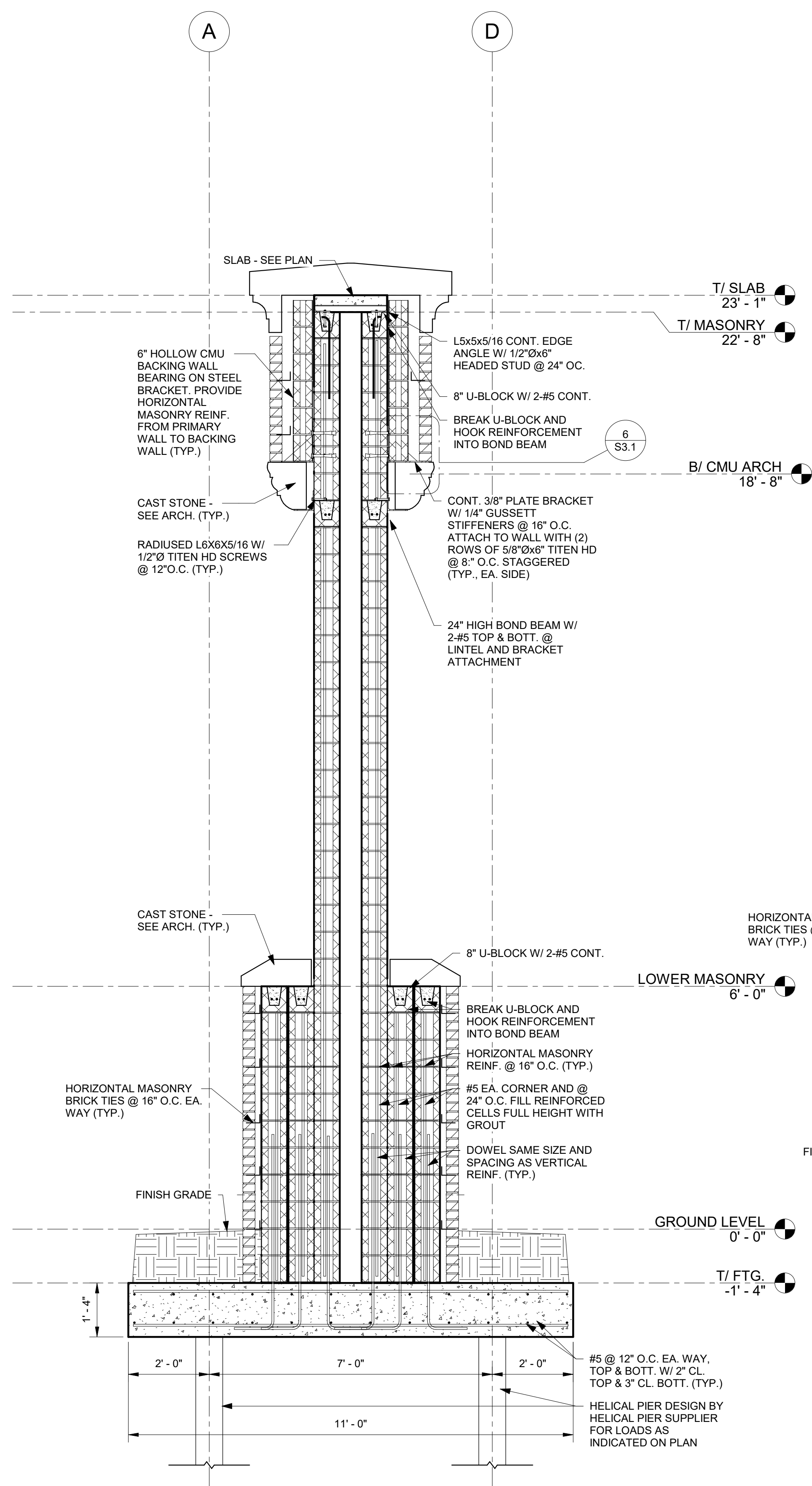
Sheet Number

A5.2

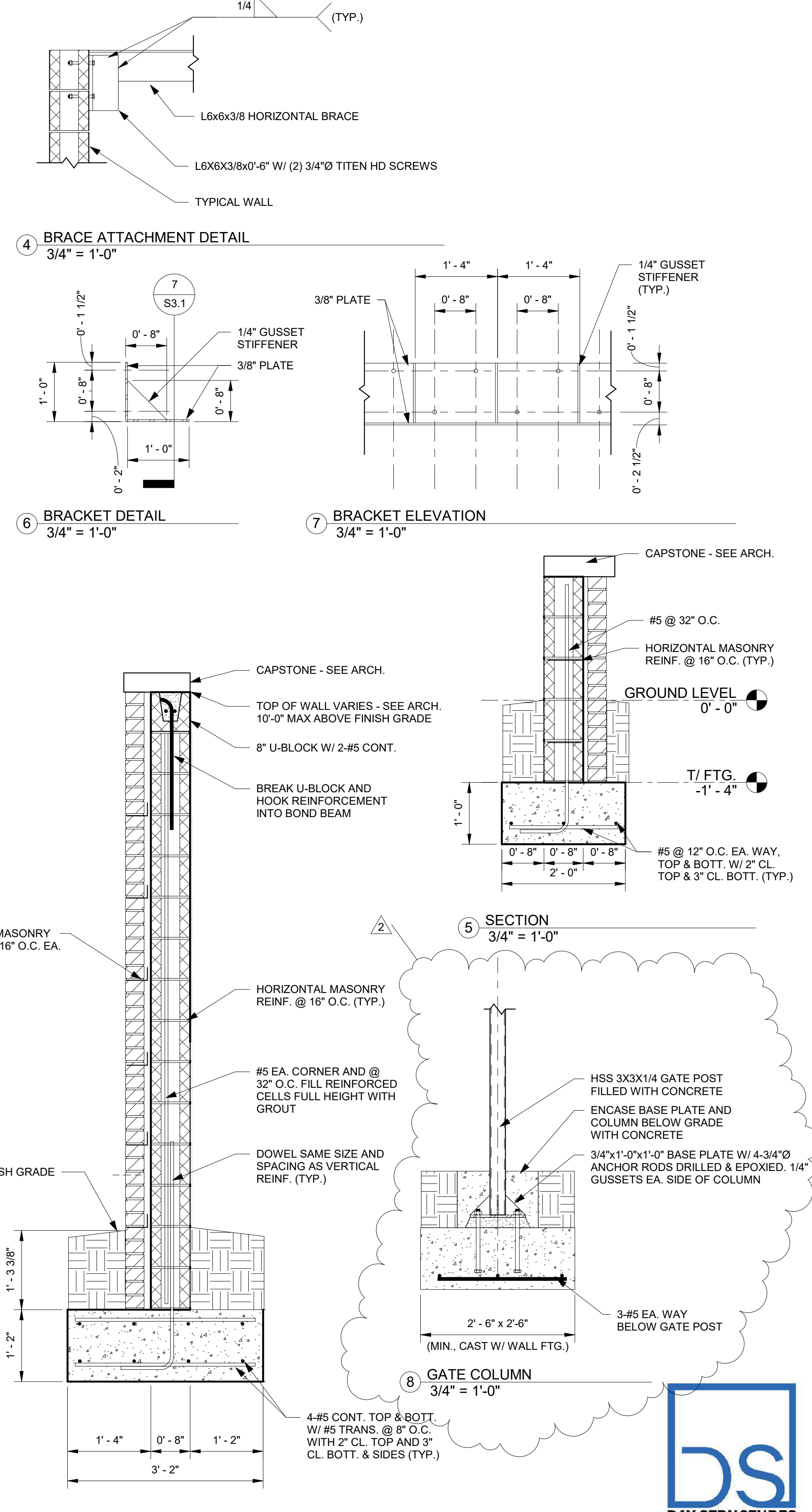




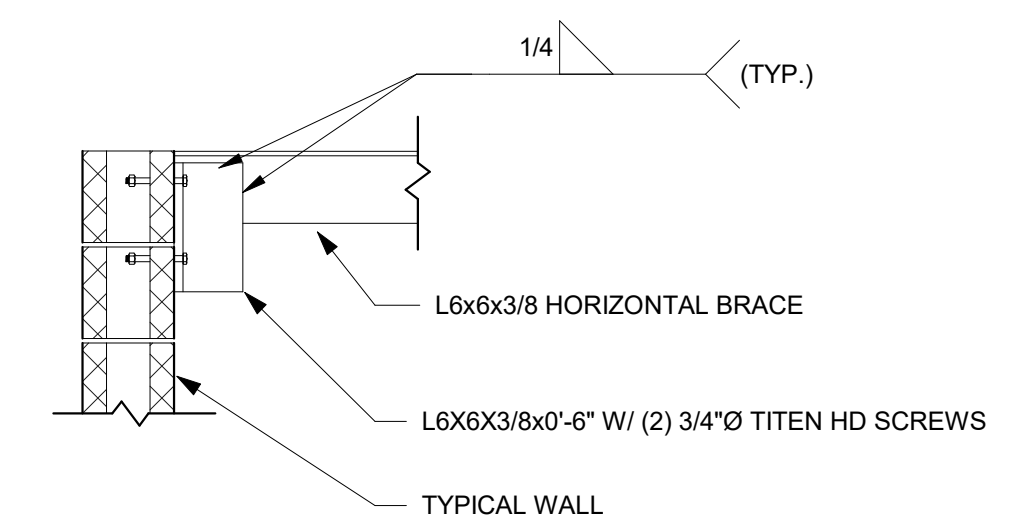
1 SECTION
1/2" = 1'-0"



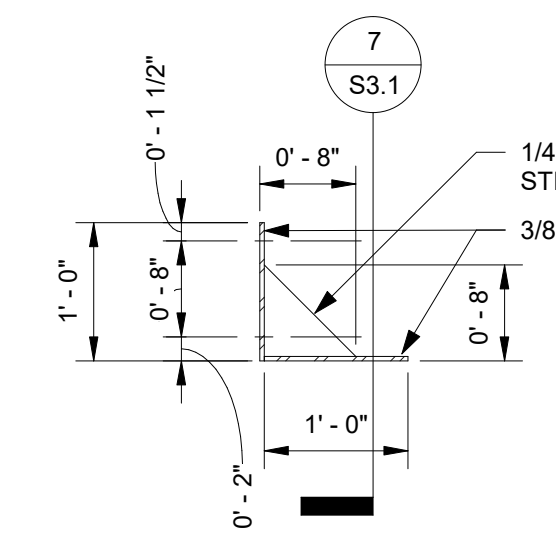
2 SECTION
1/2" = 1'-0"



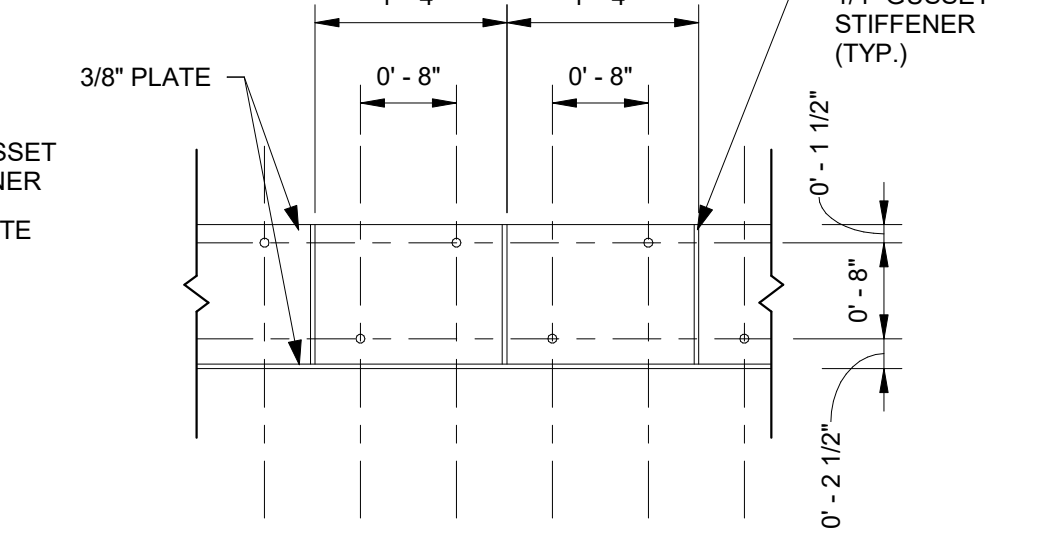
3 SECTION
3/4" = 1'-0"



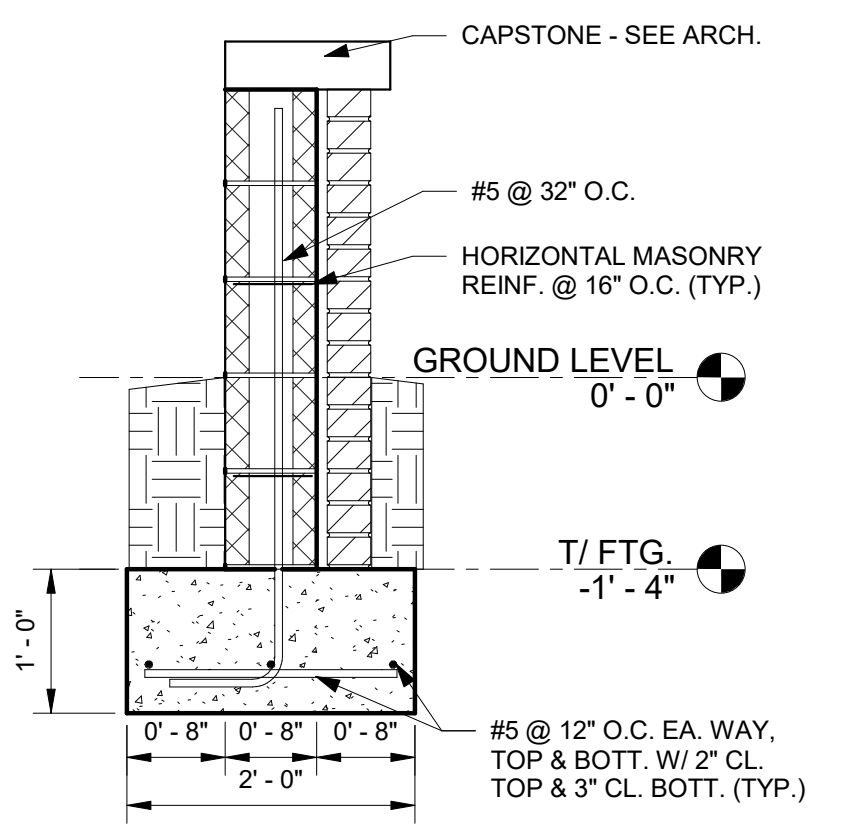
4 BRACE ATTACHMENT DETAIL
3/4" = 1'-0"



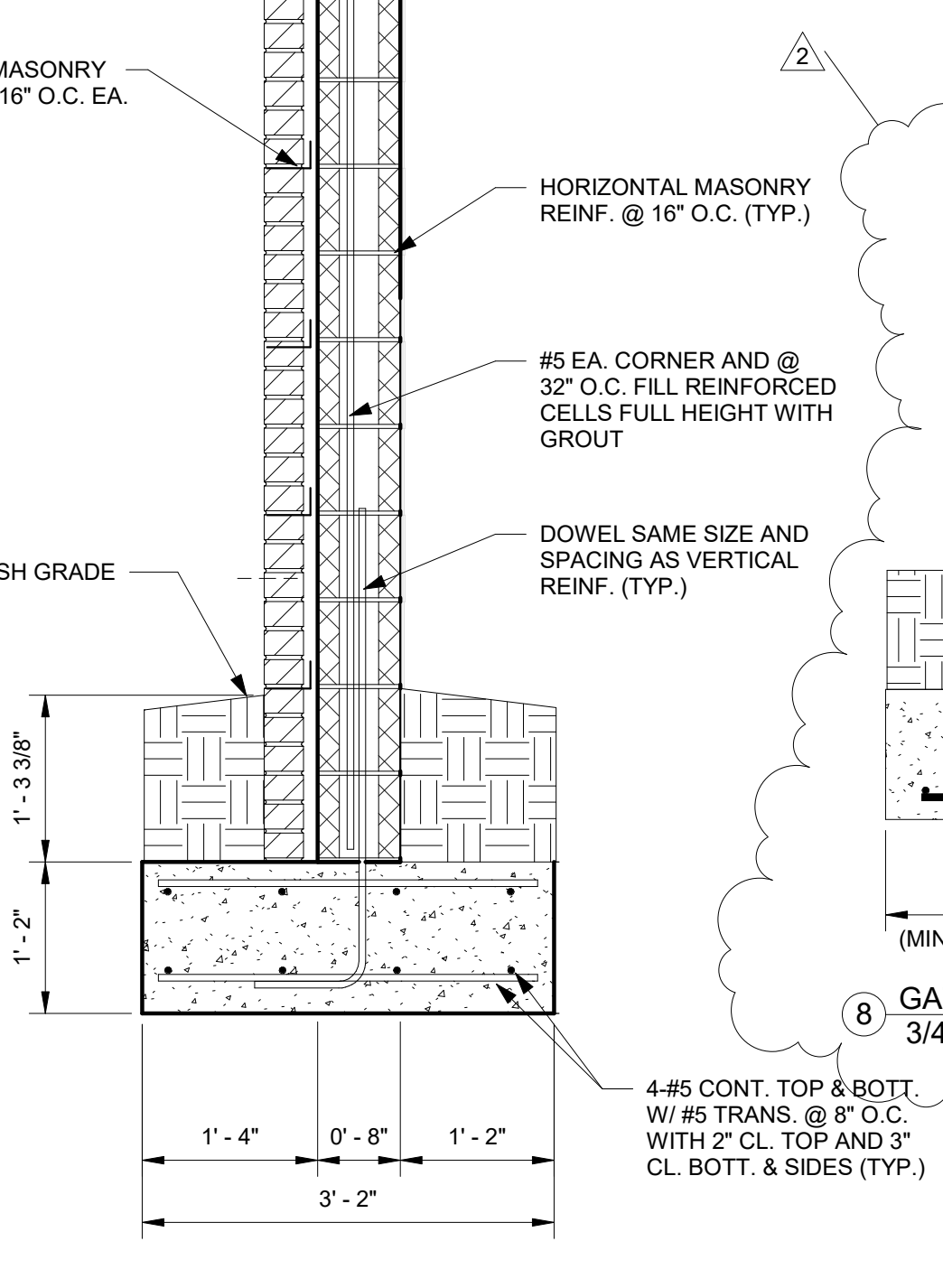
6 BRACKET DETAIL
3/4" = 1'-0"



7 BRACKET ELEVATION
3/4" = 1'-0"



5 SECTION
3/4" = 1'-0"



8 GATE COLUMN
3/4" = 1'-0"

Rev.	Description	Date
2	ADDENDA 2	09.29.22

Job Number	22016
Date	September 2022
Drawn By	TNS
Checked By	TNS

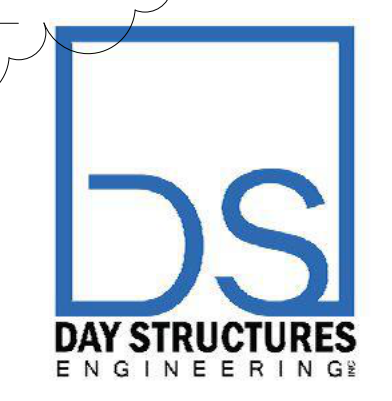
Project Title

TROY UNIVERSITY
HWY 231 SIGN
TROY, AL

Sheet Title
SECTIONS

Sheet Number

S3.1



141 W Main Street
Prattville, AL 36067
334.277.9550



GENERAL ELECTRICAL NOTES

1. PROVIDE GREEN INSULATED GROUND CONDUCTOR IN ALL RUNS IN ADDITION TO THOSE SHOWN. WHEN NO CONDUCTORS ARE SHOWN, THEN PROVIDE A PHASE, NEUTRAL AND GROUND CONDUCTOR.
2. AIM FLOODLIGHTS AT NIGHT TO EVENLY WASH WALL AND BRICK LOWER SECTION OF SIGN.
3. CONDUITS SHALL BE PVC OR RIGID GALVANIZED STEEL.
4. ALL PERSONNEL AND EQUIPMENT SHALL MAINTAIN AT LEAST 10' SEPARATION FROM ENERGIZED SUBSTATION POWER LINES AND EQUIPMENT. COORDINATE ALL WORK WITH UTILITY COMPANY.
5. PROGRAM BREAKER OPERATION TO OPERATE FLOODLIGHTS, BACK-LIT LETTERING AND LED DISPLAY AS DIRECTED BY OWNER. INSTRUCT OWNER HOW TO PROGRAM BREAKERS.

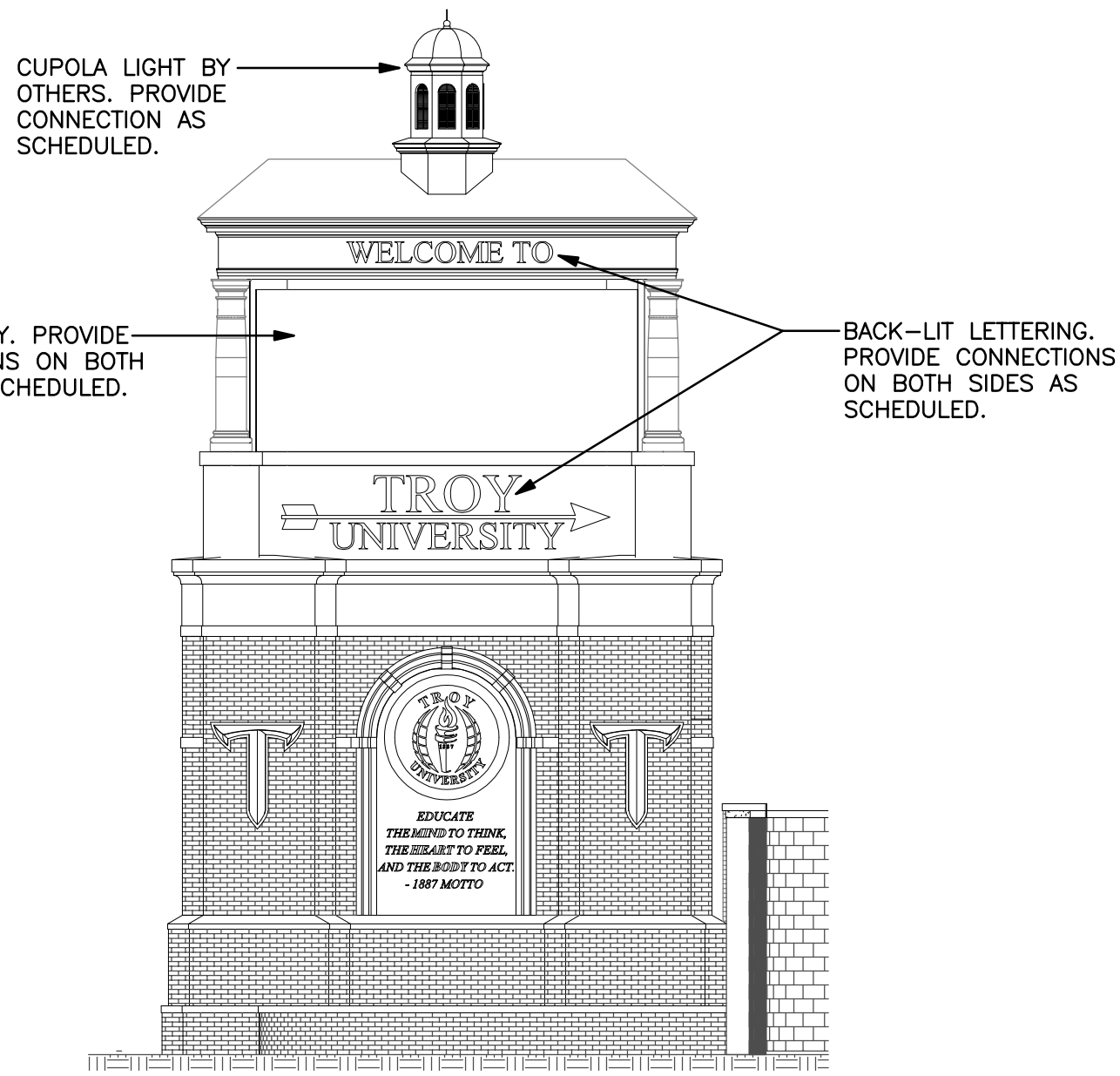
SIGN CONNECTION SCHEDULE					
NAME	PANEL	BREAKER	WIRE SIZE	NOTES	
BACK-LIT LETTERING (WEST SIDE)	LP	20A/1	2-#12 & 1-#12(GND) IN 3/4" C.	CONNECT TO LETTERING AS DIRECTED BY LETTERING INSTALLER. RUN OUT OF SITE AND UNDERGROUND.	
BACK-LIT LETTERING (EAST SIDE)	LP	20A/1	2-#12 & 1-#12(GND) IN 3/4" C.	CONNECT TO LETTERING AS DIRECTED BY LETTERING INSTALLER. RUN OUT OF SITE AND UNDERGROUND.	
LED DISPLAY (WEST SIDE)	LP	50A/2	3-#6 & 1-#10(GND) IN 1" C.	CONNECT TO LED DISPLAY AS DIRECTED BY LETTERING INSTALLER. COORDINATE BREAKER RATING AND WIRE SIZE WITH DISPLAY NAMEPLATE. RUN OUT OF SITE AND UNDERGROUND.	
LED DISPLAY (EAST SIDE)	LP	50A/2	3-#6 & 1-#10(GND) IN 1" C.	CONNECT TO LED DISPLAY AS DIRECTED BY LETTERING INSTALLER. COORDINATE BREAKER RATING AND WIRE SIZE WITH DISPLAY NAMEPLATE. RUN OUT OF SITE AND UNDERGROUND.	
CUPOLA LIGHT	LP	20A/1	2-#12 & 1-#12(GND) IN 3/4" C.	CONNECT TO CUPOLA LIGHT (BY OTHERS) AS DIRECTED BY CUPOLA INSTALLER. RUN OUT OF SITE AND UNDERGROUND.	

PANELBOARD SCHEDULE												
PANEL	TYPE	CABINET	MAINS			BRANCHES					REMARKS	
			TYPE	SIZE	PHASE FEED	REQ'D	SPARE	TOTAL	POLES	FRAME		TRIP
LP	SQ D POWERLINK WITH U/L S.E. LABEL	SURFACE NEMA 3R	MCB	200A	1PH, 3W 120/240V W/GND BUS	1	2	3	1	ECB-G3	20A	FLOOD LIGHTING
						2	0	2	1	ECB-G3	20A	BACK-LIT LETTERING
						1	0	1	1	ECB-G3	20A	CUPOLA LIGHT
						2	0	2	1	EDB	20A	RECEPTACLE * IRRIGATION
						2	0	2	2	EDB	**	LED DISPLAY
						6	0	6	1	EDB	--	SPACE ONLY

** LED DISPLAY BREAKER SIZE TO BE COORDINATED WITH DISPLAY NAMEPLATE.

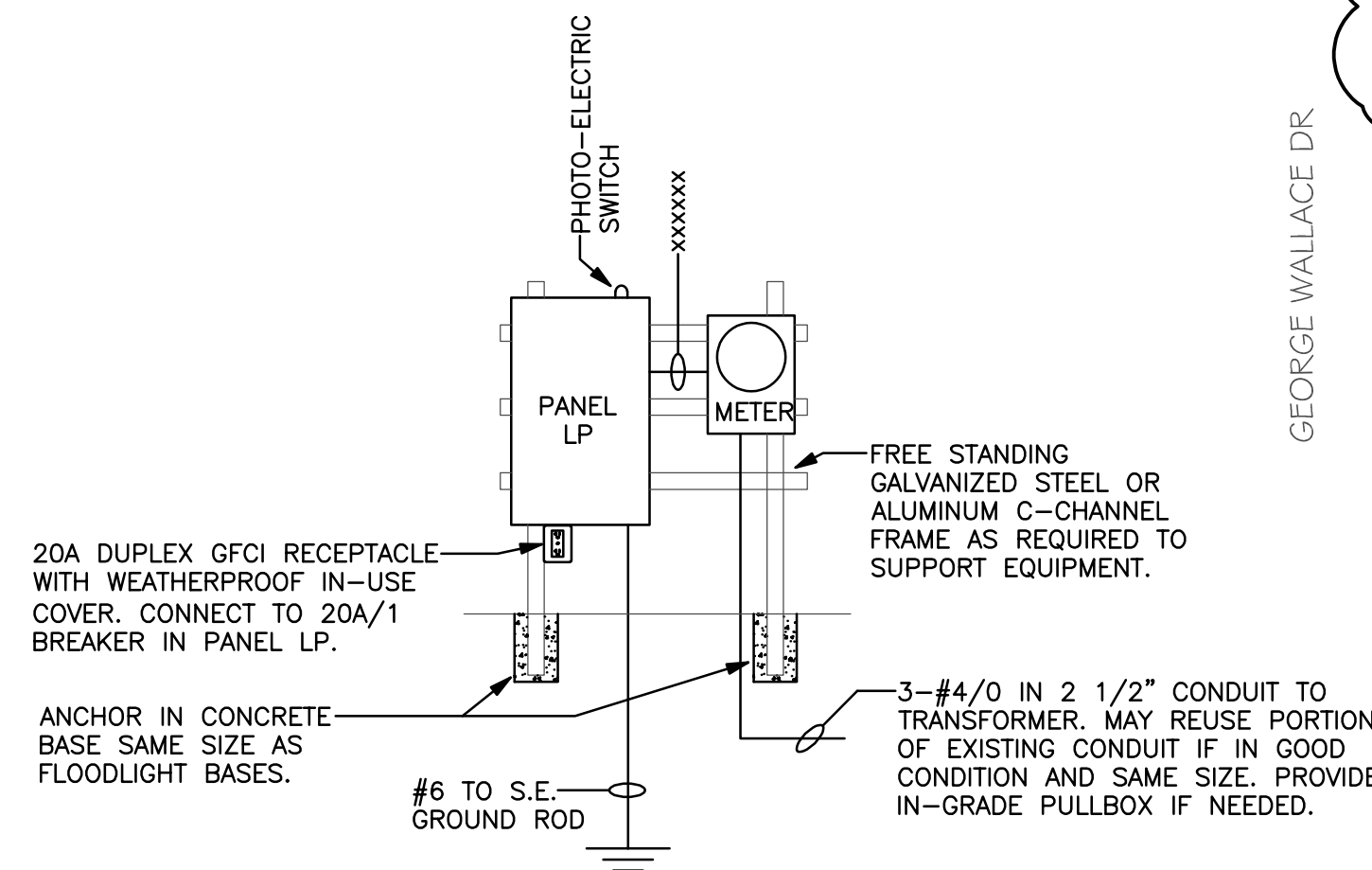
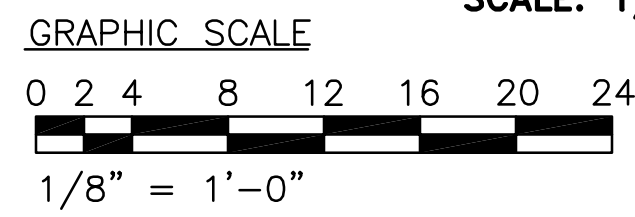
PANELBOARD NOTES:

1. PROVIDE ARC-FLASH WARNING LABELS THAT COMPLY WITH NEC 110.16 ON ELECTRICAL EQUIPMENT.
2. PANEL SHALL HAVE NAMEPLATE ON OUTSIDE COVER STATING PANEL DESIGNATION, VOLTAGE AND PHASE AND WHERE SUPPLY OF POWER ORIGINATES PER NEC 408.4(B).
3. THE POWER DISTRIBUTION SYSTEM SHALL BE RATED FOR 10,000 A.I.C.
4. PANEL SHALL BE SQUARE D POWERLINK 1000 SERIES PANEL WITH CONTROLLABLE AND NON-CONTROLLABLE BREAKERS, TIMECLOCK AND PHOTOELECTRIC SWITCH OR APPROVED EQUAL. BREAKERS SERVING FLOOD LIGHTING AND BACK-LIT LETTERING SHALL BE CONTROLLED BY TIMECLOCK AND/OR PHOTOELECTRIC SWITCH.



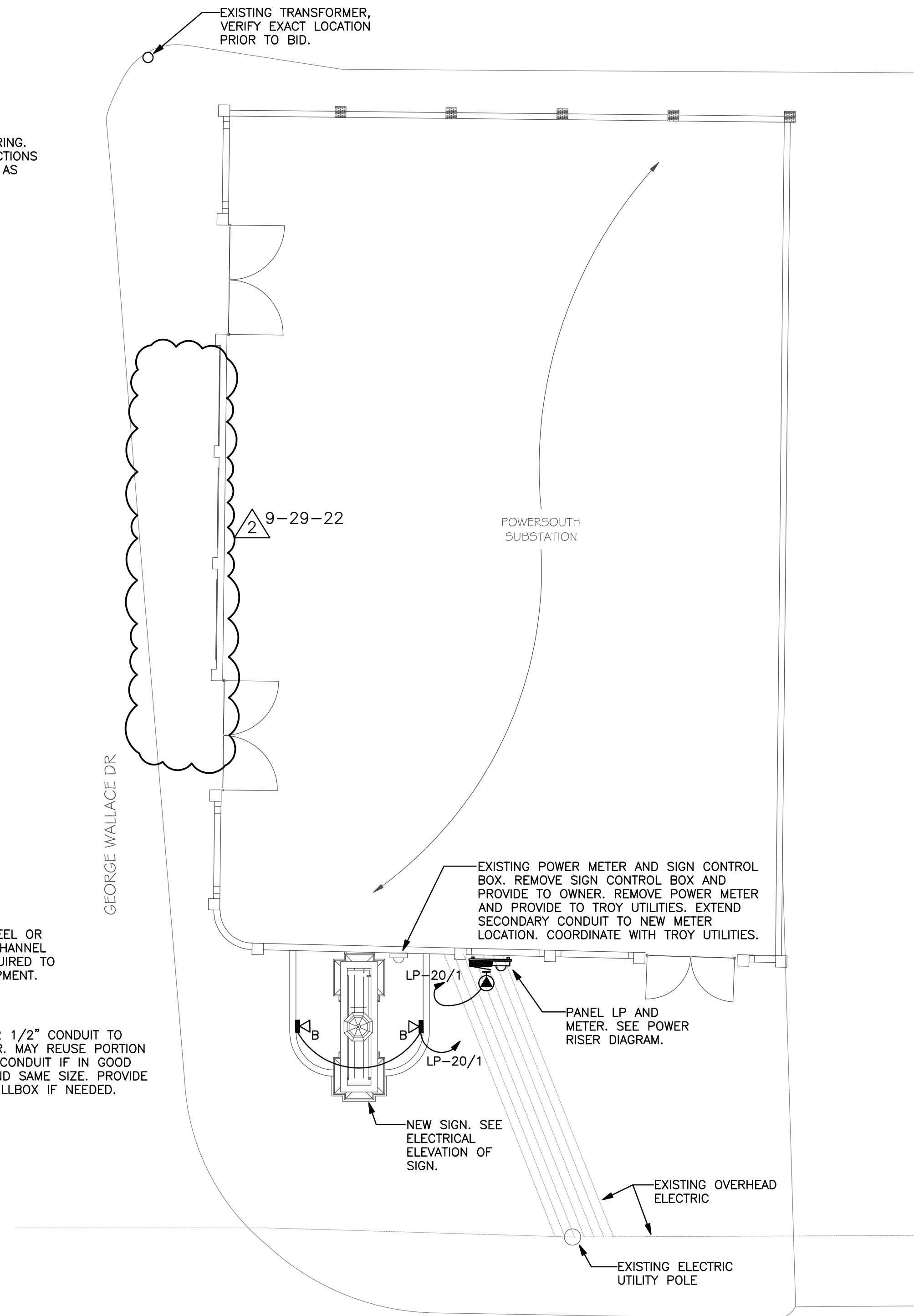
ELECTRICAL ELEVATION OF SIGN

SCALE: 1/8" = 1'-0"



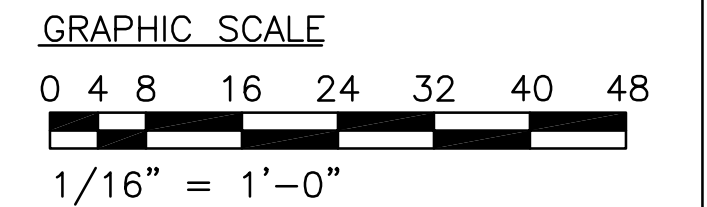
POWER RISER DIAGRAM

NO SCALE



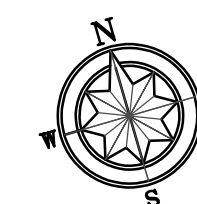
ELECTRICAL SITE PLAN

SCALE: 1/16" = 1'-0"



LEGEND:

- NEW LED FLOOD LIGHT, SEE DETAILS.
- BRANCH CIRCUIT WIRING IN UNDERGROUND PVC CONDUIT, 2-#10 & 1-#10(GND) CONDUCTORS IN 1" CONDUIT 24" BELOW GRADE UNLESS NOTED.
- IRRIGATION CONTROLLER CONNECTION, 120V. MAKE CONNECTION TO CONTROLLER AS DIRECTED BY IRRIGATION CONTRACTOR.



MCE MILLS-CONOLY ENGINEERING, P.C.
 8218 OLD FEDERAL ROAD MONTGOMERY, AL 36117
 PHONE: (334) 270-0010 WEB: www.mills-conoly.com

S&L
 ARCHITECTURE & INTERIOR DESIGN
 Montgomery | Dothan | WWW.S&LARCH.COM
 (205) 384-2603 FAX: (205) 384-7911

Rev.	Description	Date
2	Addenda 2	09.29.22

Job Number	22016
Date	SEPTEMBER 2022
Drawn By	SCC
Checked By	SLC

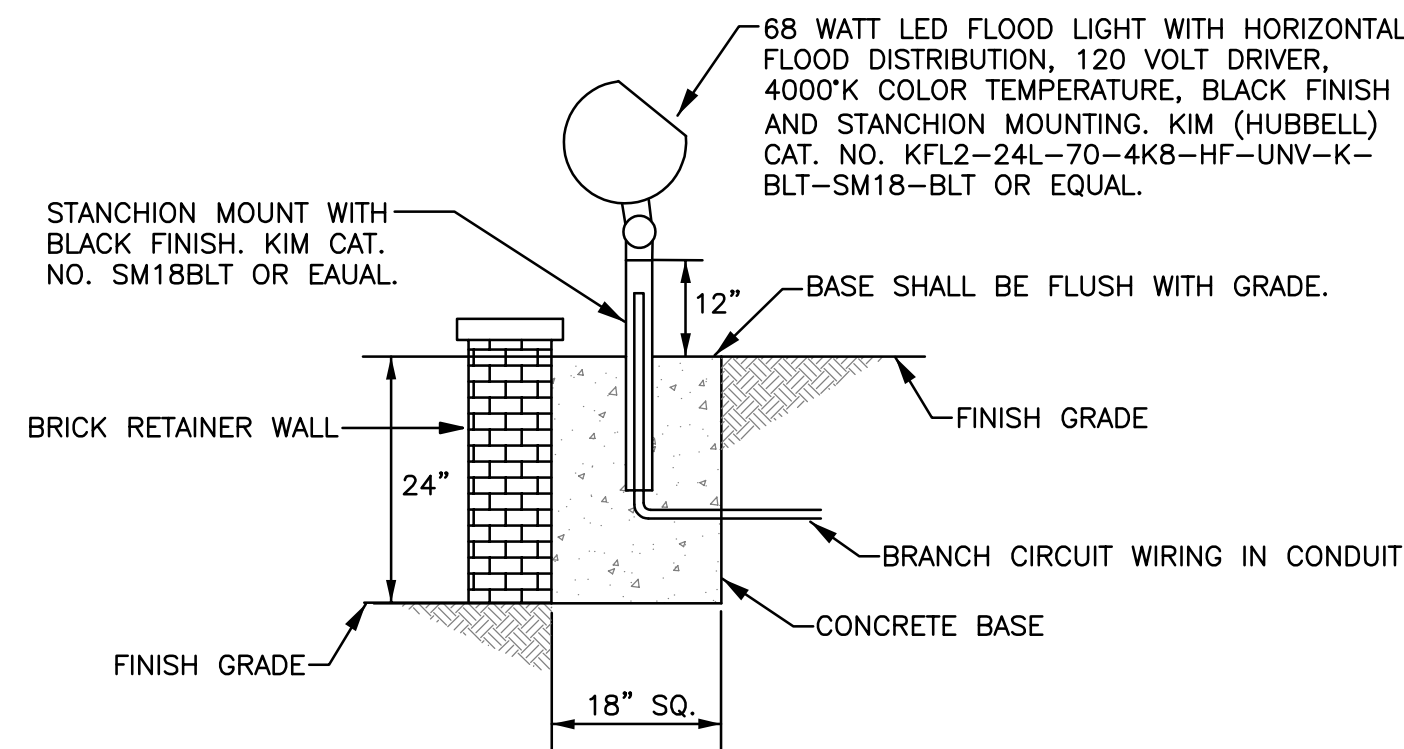
Project Title

TROY UNIVERSITY
 HWY 231 SIGN
 TROY, AL

Sheet Title
 ELECTRICAL PLAN

Sheet Number

E1.0



SIGN FLOODLIGHT DETAIL

NO SCALE

9-29-22